

REX Band Saw series

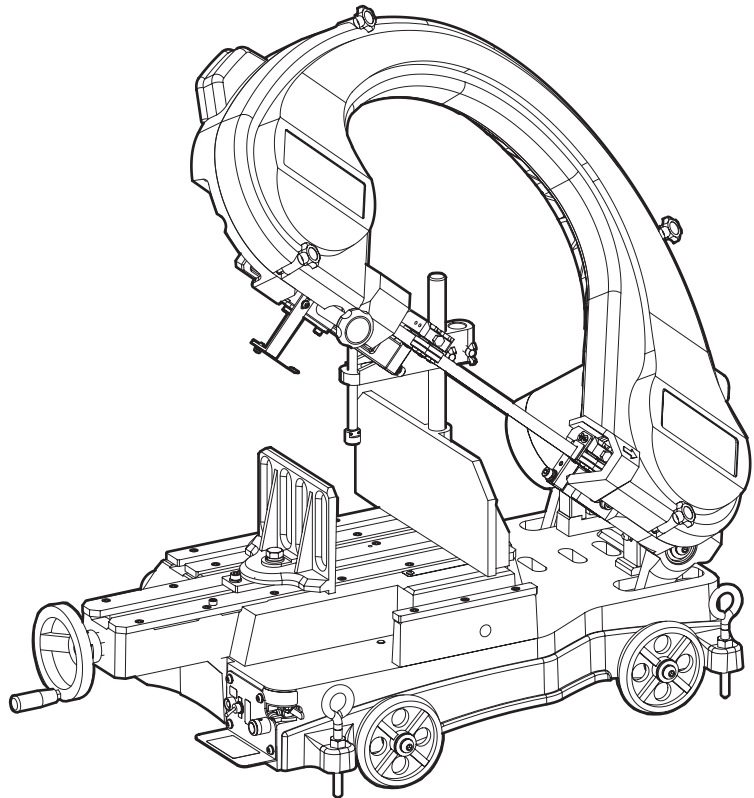
50/60Hz

MANTIS 270A

XB270A

PARTS LIST

As of April, 2012

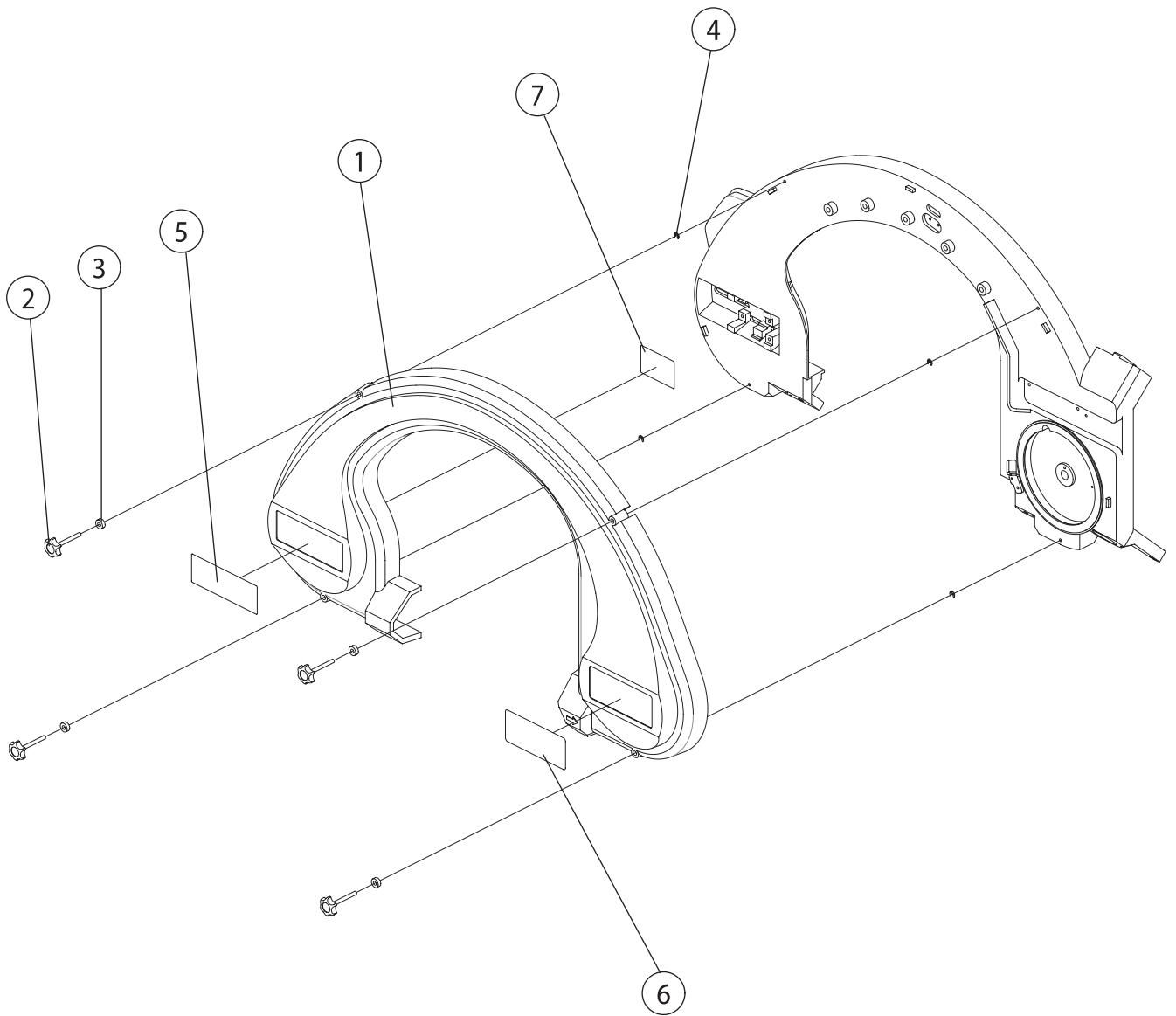


CONTENTS

1. **Frame Cover**
2. **Frame, Motor**
3. **Pulley, Tension**
4. **SELI**
5. **Load Adjustment, Switch**
6. **Gear, Wheels**
7. **Vice**

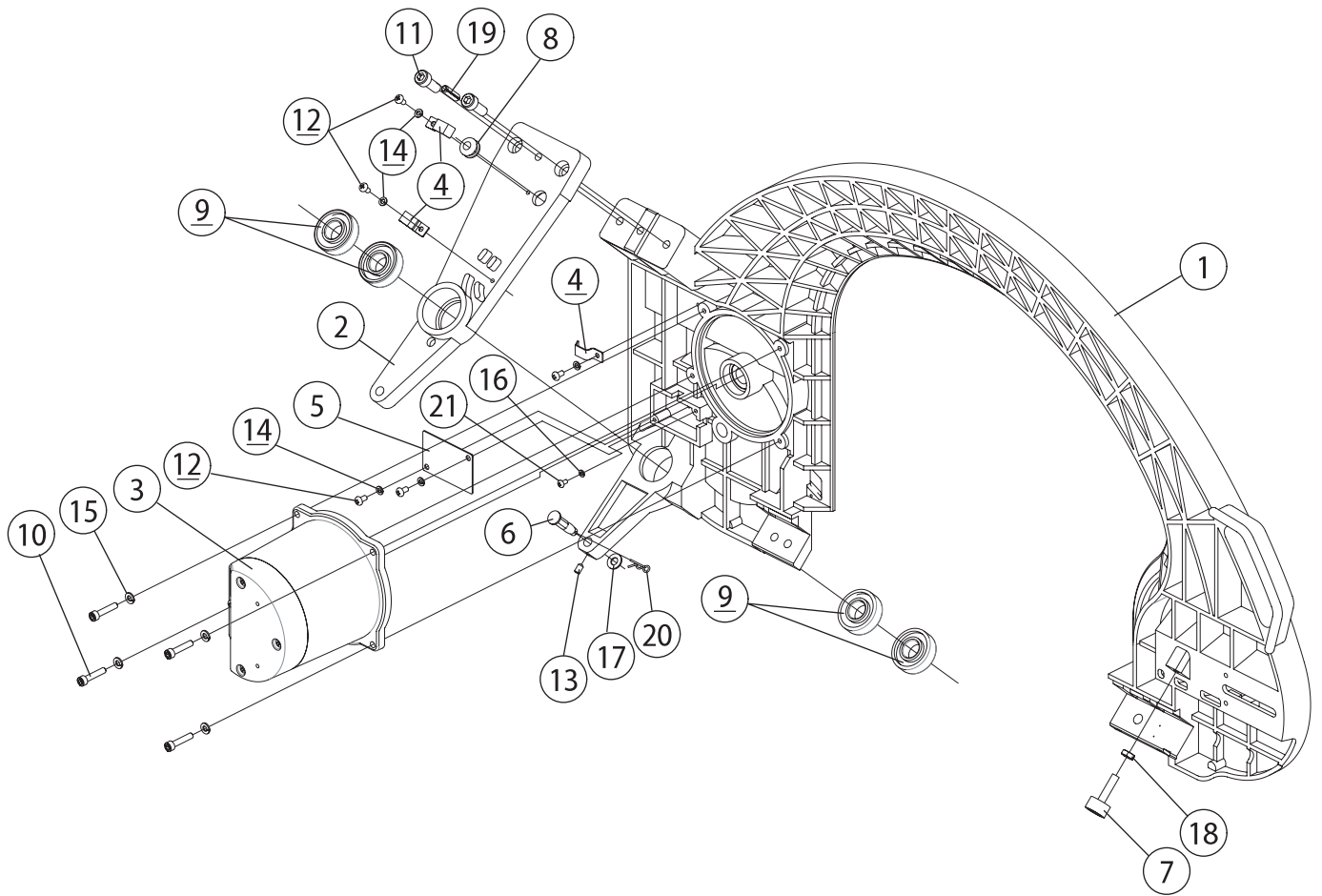
REX

XB270A - 1. Frame Cover



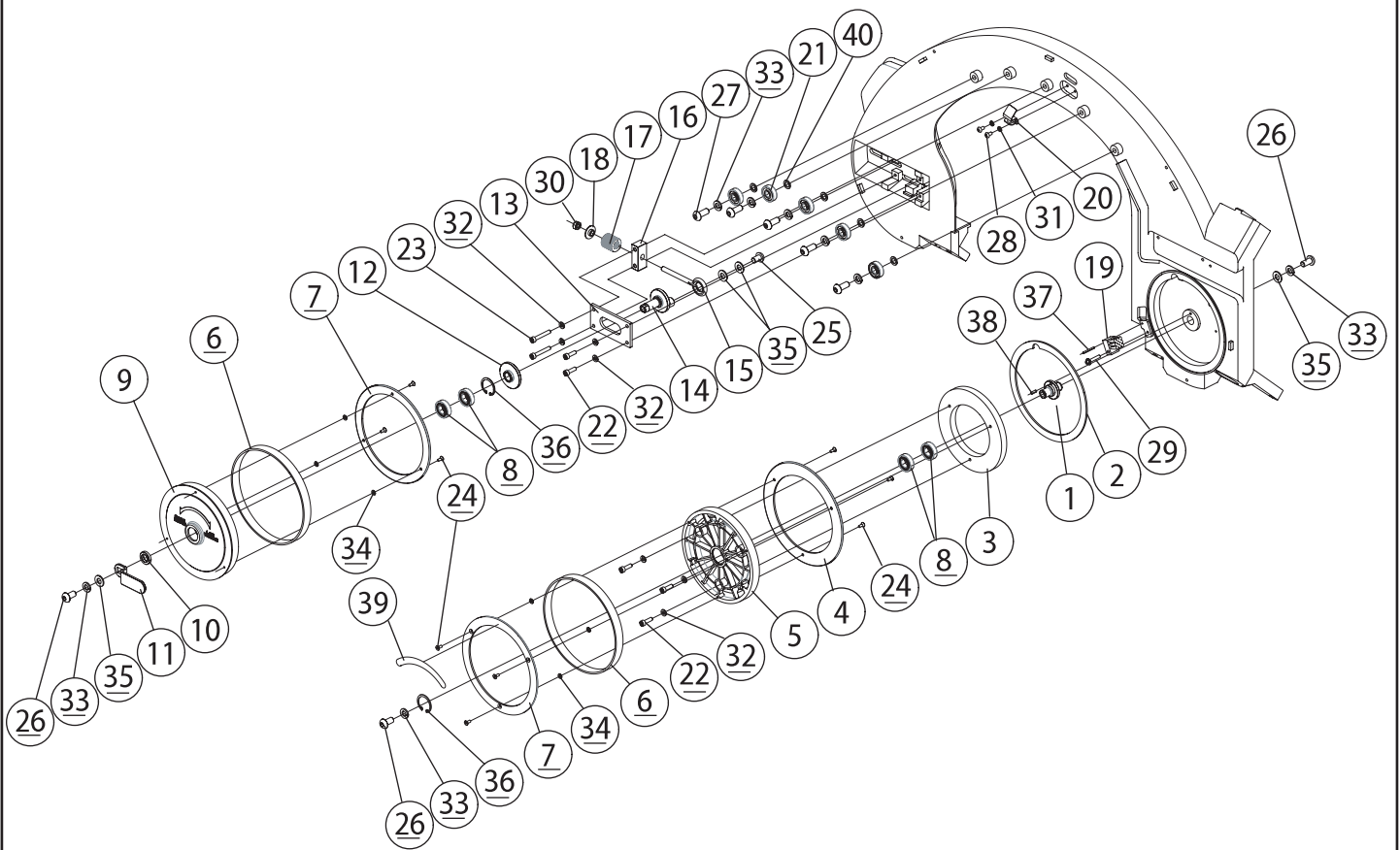
Page No.	Item No.	Page Title	Part No.	Part Name	Spec.	Q'ty	Remarks
1	1	1. Frame Cover	SM60	Frame Cover		1	
1	2	1. Frame Cover	SM61	Frame Knob		4	
1	3	1. Frame Cover	SM62	Frame Knob Collar		4	
1	4	1. Frame Cover	WY05	E-Type Ring	(5)	4	
1	5	1. Frame Cover	6V81	270A Name Plate Sticker		1	Not For Sale
1	6	1. Frame Cover	5V18	REX Logo Sticker	Black & Green	1	Not For Sale
1	7	1. Frame Cover	SL68	Sticker (Blade Installation)	English/WH	1	

XB270A - 2. Frame, Motor



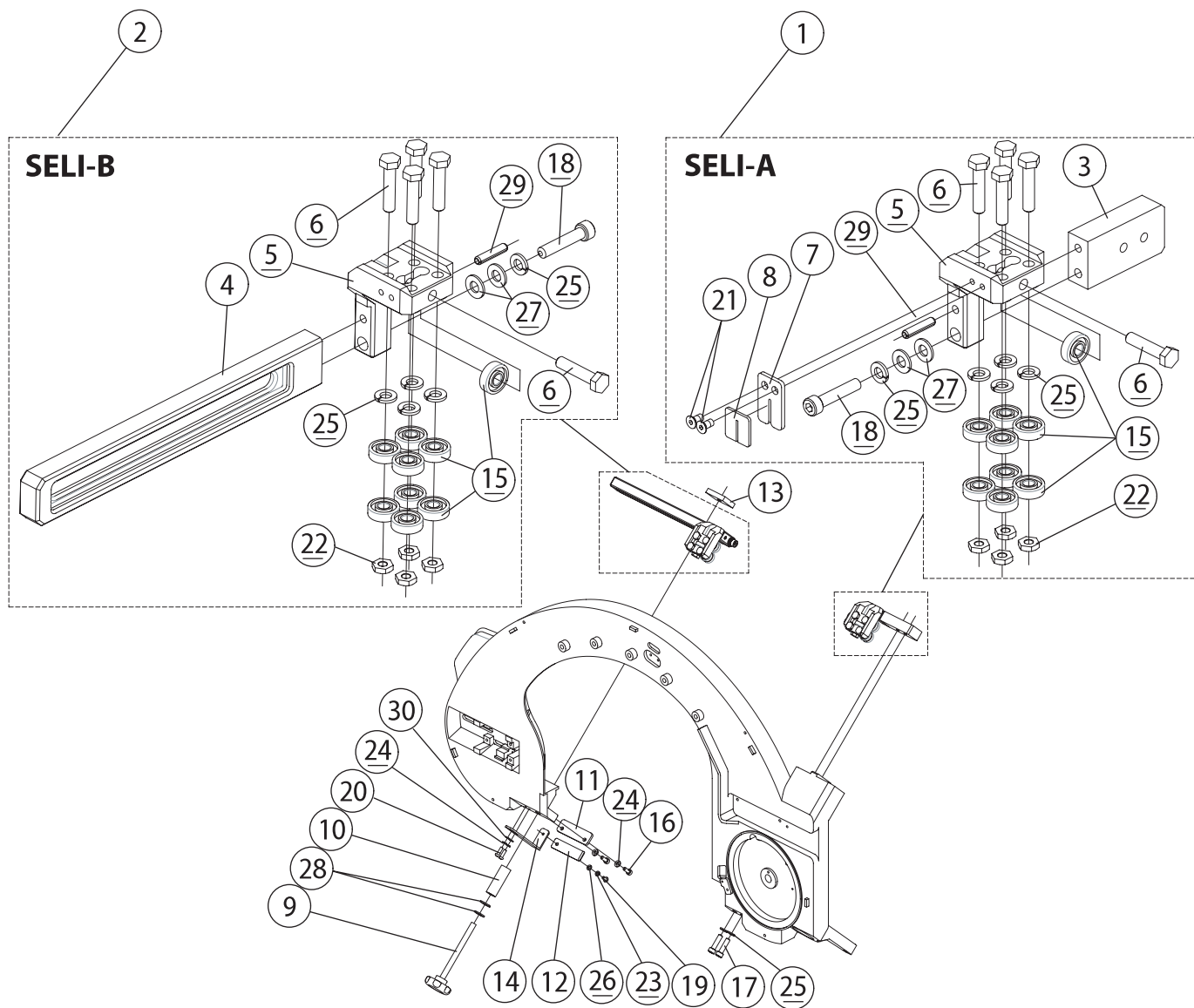
Page No.	Item No.	Page Title	Part No.	Part Name	Spec.	Q'ty	Remarks
2	1	2. Frame, Motor	SM46	Frame		1	
2	2	2. Frame, Motor	SM47	Hinge		1	
2	3	2. Frame, Motor	SL52B	Motor	(220V)	1	
2	4	2. Frame, Motor	SJ16	Cable Clip		3	
2	5	2. Frame, Motor	SM45	Connector Cover		1	
2	6	2. Frame, Motor	SM51	Hinge Pin		1	
2	7	2. Frame, Motor	SM52	Rubber Bolt	(W5/16x32)	1	
2	8	2. Frame, Motor	S609	Cord Bush		1	
2	9	2. Frame, Motor	SM81	Bearing	(6204ZZ)	4	
2	10	2. Frame, Motor	W065	Hex Socket Head Cap Screw	(M6x25)	4	
2	11	2. Frame, Motor	W002	Hex Socket Head Cap Screw	(M10x25)	2	
2	12	2. Frame, Motor	W252	Pan Head Machine Screw	(M5x10)	5	
2	13	2. Frame, Motor	W776	Hex Socket Set Screw	(Cup Point M6x10)	1	
2	14	2. Frame, Motor	WG5A	Spring Washer	(M5) Black	5	
2	15	2. Frame, Motor	WG6A	Spring Washer	(M6) Black	4	
2	16	2. Frame, Motor	WG4A	Spring Washer	(M4) Black	1	
2	17	2. Frame, Motor	WZ11	Flat Washer	(8)	1	
2	18	2. Frame, Motor	#0028	Nut	(W5/16)	1	
2	19	2. Frame, Motor	SMA2	Roll Pin	(ø8x28)	1	
2	20	2. Frame, Motor	WN22	Snap Pin	(8)	1	
2	21	2. Frame, Motor	W241	Pan Head Machine Screw	(M4x8)	1	

XB270A - 3. Pulley, Tension



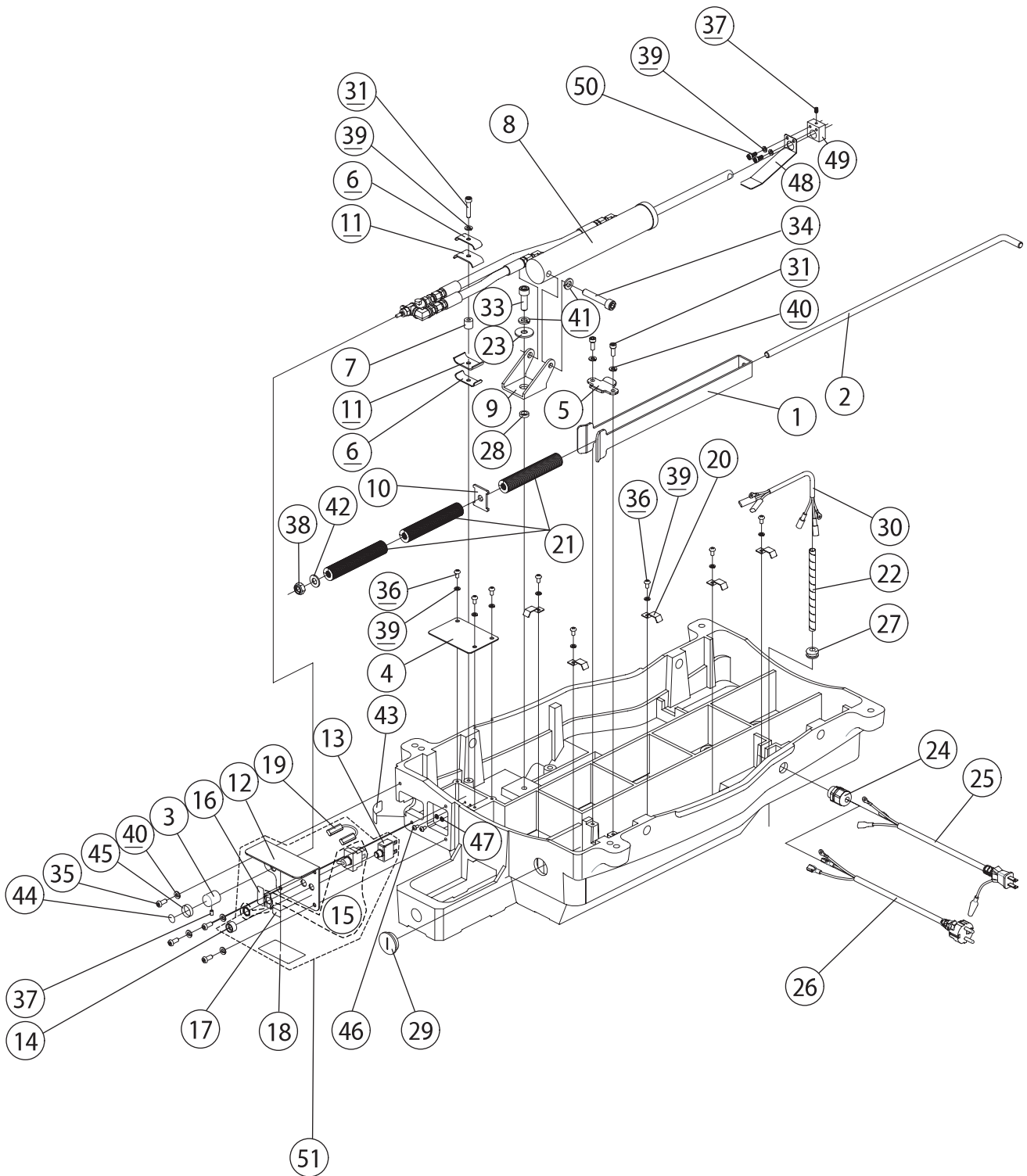
Page No.	Item No.	Page Title	Part No.	Part Name	Spec.	Q'ty	Remarks
3	1	3. Pulley, Tension	SJ79	Pulley (A) Shaft		1	
3	2	3. Pulley, Tension	SJ44	Dustproof Felt	(3 Sheets/Set)	1 Set	
3	3	3. Pulley, Tension	SJ36	Gear		1	
3	4	3. Pulley, Tension	SJ57	Pulley Plate (A)		1	
3	5	3. Pulley, Tension	SJ55	Pulley (A)		1	
3	6	3. Pulley, Tension	SJ59	Rubber ring		2	
3	7	3. Pulley, Tension	SJ58	Pulley Plate (B)		2	
3	8	3. Pulley, Tension	SK53	Bearing	(6002ZZ)	4	
3	9	3. Pulley, Tension	SJ56	Pulley (B)		1	
3	10	3. Pulley, Tension	SJ87	Collar		1	
3	11	3. Pulley, Tension	SJ85	Tension Lever		1	
3	12	3. Pulley, Tension	SJ83	Shaft B Bush		1	
3	13	3. Pulley, Tension	SJ82	Tension Fastening Plate		1	
3	14	3. Pulley, Tension	SJ80	Pulley (B) Shaft		1	
3	15	3. Pulley, Tension	SJ84	Tension Rod		1	
3	16	3. Pulley, Tension	SJ81	Rod Guide		1	
3	17	3. Pulley, Tension	SM48	Coil Spring	MISUMI SWM25-35	1	
3	18	3. Pulley, Tension	SJ88	Spring Cap		1	
3	19	3. Pulley, Tension	SL47	Brush		1	
3	20	3. Pulley, Tension	SL42S	Roller Holder Set		1 Set	No.20-a-d
3	20-a	3. Pulley, Tension	SL42	Roller Holder		1	
3	21-b	3. Pulley, Tension	SL43	Stopper Roller		1	
3	22-c	3. Pulley, Tension	SL44	Roll Pin		1	
3	23-d	3. Pulley, Tension	WY03	E-Type Ring	(3)	2	
3	21	3. Pulley, Tension	S701	Bearing	(6200ZZ)	5	
3	22	3. Pulley, Tension	W063	Hex Socket Head Cap Screw	(M6x20)	5	
3	23	3. Pulley, Tension	W067	Hex Socket Head Cap Screw	(M6x40)	2	
3	24	3. Pulley, Tension	SK56	Hex Socket Flat Head Screw	(M4x10)	9	
3	25	3. Pulley, Tension	WA31	Hex Socket Button Head Screw	(M10x15)	1	
3	26	3. Pulley, Tension	SK54	Hex Socket Button Head Screw	(M10x20)	3	
3	27	3. Pulley, Tension	SK57	Hex Socket Button Head Screw	(M10x25)	5	
3	28	3. Pulley, Tension	W252	Pan Head Machine Screw	(M5x10)	2	
3	29	3. Pulley, Tension	SMA3	Cross recessed pan head screw with captive washer	(NSET5-30)	1	
3	30	3. Pulley, Tension	WE08	U nut	(M8)	1	
3	31	3. Pulley, Tension	WG5A	Spring Washer	(5)	2	
3	32	3. Pulley, Tension	WG6A	Spring Washer	(6)	7	
3	33	3. Pulley, Tension	WGB0	Spring Washer	(10)	8	
3	34	3. Pulley, Tension	WI42	Flat Washer	(4)	6	
3	35	3. Pulley, Tension	WI03	Flat Washer	(10)	4	
3	36	3. Pulley, Tension	SK55	Snap Ring (Internal)	(32mm)	2	
3	37	3. Pulley, Tension	WL3B	Roll pin	(φ3x28)	1	
3	38	3. Pulley, Tension	WL42	Roll pin	(φ4x12)	1	
3	39	3. Pulley, Tension	SL69	Pulley sticker	(English)	1	
3	40	3. Pulley, Tension	SM65	Flat Washer	(10 Φ16 t1.6)	5	

XB270A - 4. SELI



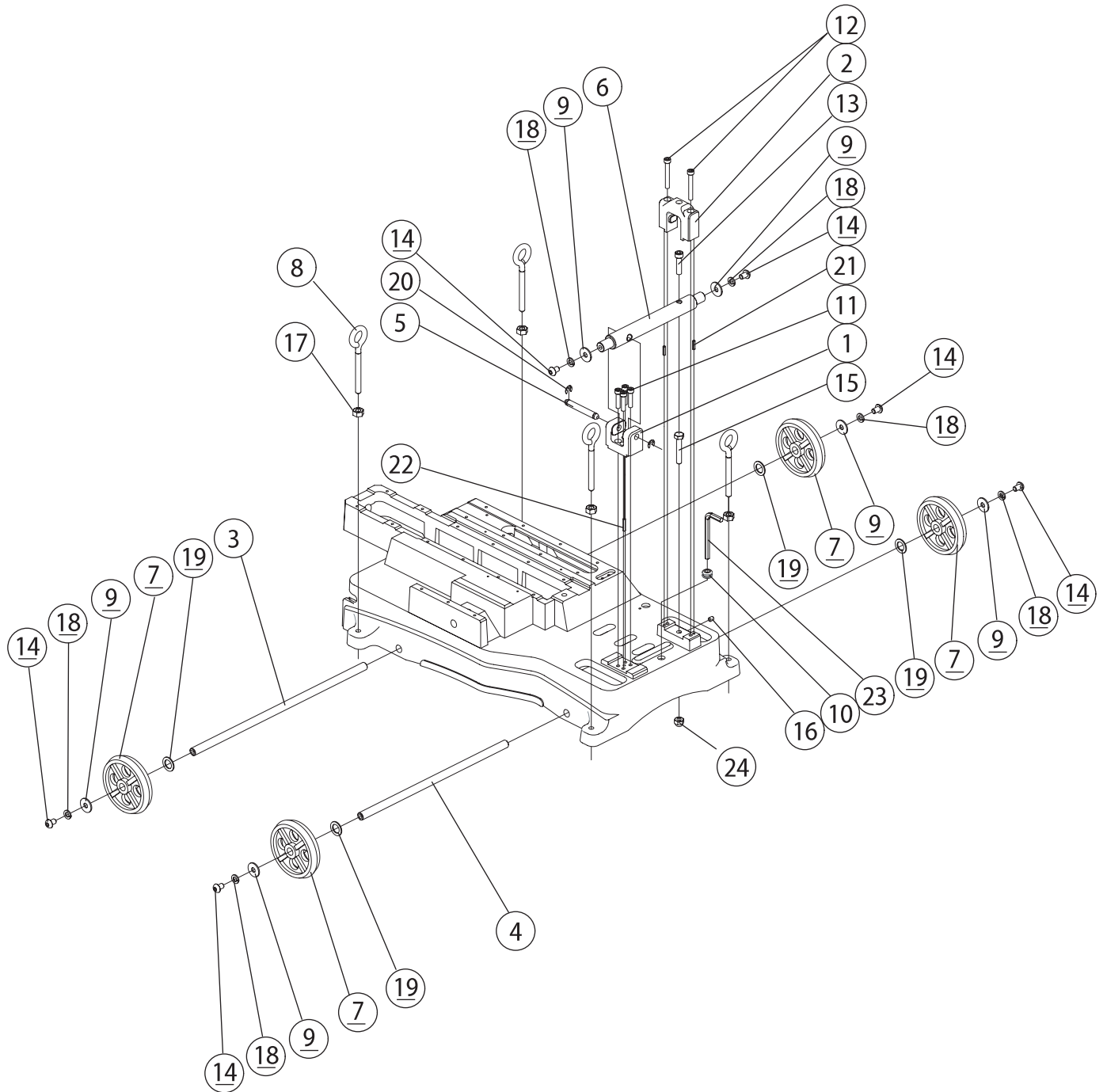
Page No.	Item No.	Page Title	Part No.	Part Name	Spec.	Q'ty	Remarks
4	1	4. SELI	SM63A	SELI A Set		1 Set	
4	2	4. SELI	SM63B	SELI B Set		1 Set	
4	3	4. SELI	SM58	SELI Holder A		1	
4	4	4. SELI	SM59	SELI Holder B		1	
4	5	4. SELI	SM63	SELI		2	
4	6	4. SELI	SJ51	SELI Shaft A		10	
4	7	4. SELI	SM57	SELI Plate		1	
4	8	4. SELI	SJ50	Scraper		1	
4	9	4. SELI	SM49	Grip 2		1	
4	10	4. SELI	SM50	Kick Board Collar		1	
4	11	4. SELI	SM53	SELI (B) Guide Plate		1	
4	12	4. SELI	SM54	Kicker Spring		1	
4	13	4. SELI	SM55	Nut		1	
4	14	4. SELI	SM56	Kick Board		1	
4	15	4. SELI	SK59	Bearing	(608ZZ)	18	
4	16	4. SELI	W062	Hex Socket Head Cap Screw	(M6x16)	2	
4	17	4. SELI	W08F	Hex Socket Head Cap Screw	(M8x30)	2	
4	18	4. SELI	W085	Hex Socket Head Cap Screw	(M8x40)	2	
4	19	4. SELI	W252	Pan Head Machine Screw	(M5x10)	1	
4	20	4. SELI	W253	Pan Head Machine Screw	(M5x16)	2	
4	21	4. SELI	W346	Hex Socket Flat Head Machine Screw	(M5x10)	2	
4	22	4. SELI	WD08	Hex nut	(M8 3 Types)	8	
4	23	4. SELI	WG5A	Spring Washer	(M5) Black	1	
4	24	4. SELI	WG6A	Spring Washer	(M6) Black	4	
4	25	4. SELI	WG8A	Spring Washer	(M8) Black	12	
4	26	4. SELI	WI52	Flat Washer	(5)	1	
4	27	4. SELI	WI82	Flat Washer	(8)	4	
4	28	4. SELI	WI03	Flat Washer	(10)	2	
4	29	4. SELI	WL65	Roll pin	(φ6x28)	2	
4	30	4. SELI	WJ16	Flat Washer	(6)	2	

XB270A - 5. Load Adjustment, Switch



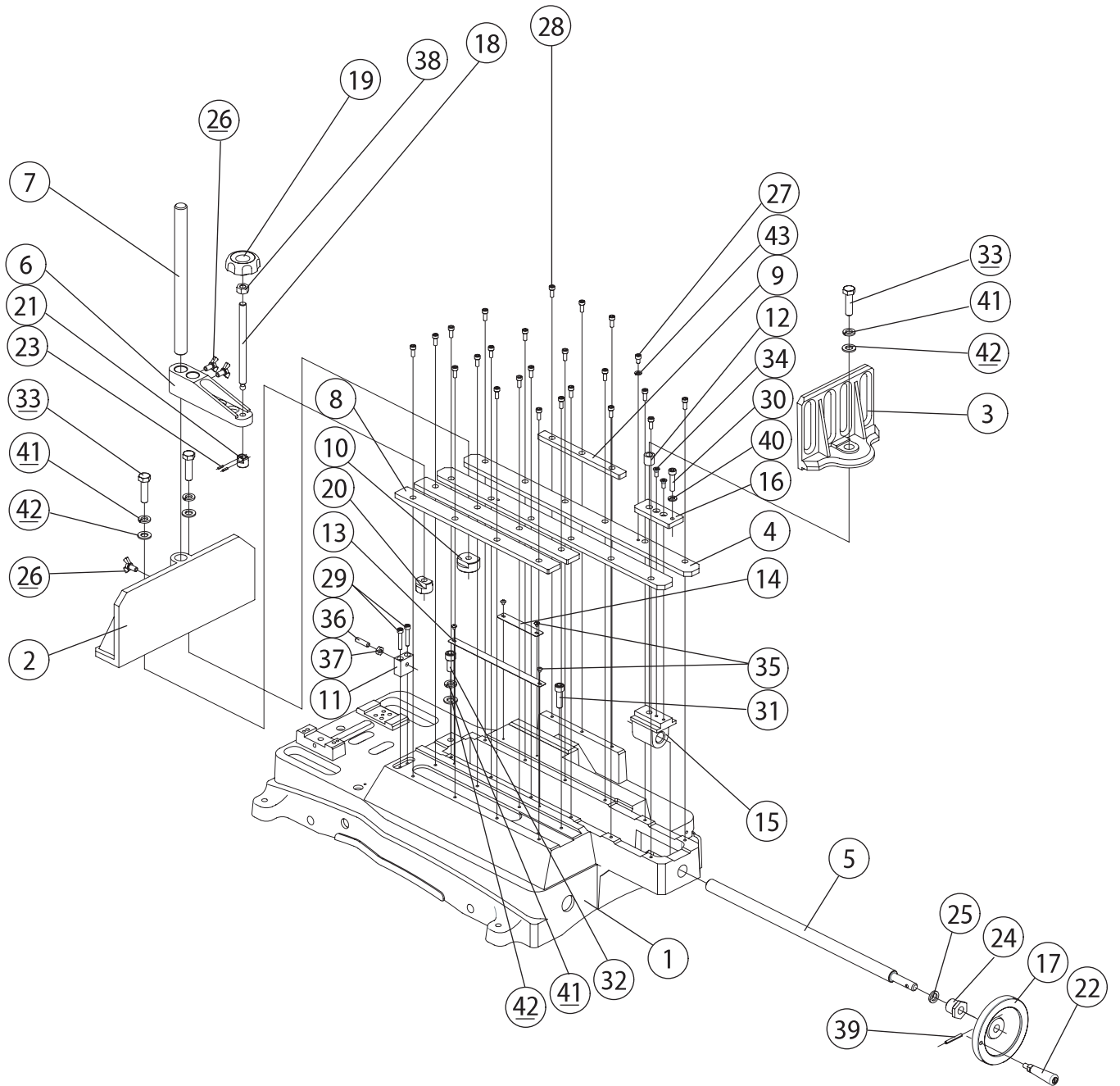
Page No.	Item No.	Page Title	Part No.	Part Name	Spec.	Q'ty	Remarks
5	1	5. Load adjustment, Switch	SM13	Load Spring Holder		1	
5	2	5. Load adjustment, Switch	SM16	Load Rod		1	
5	3	5. Load adjustment, Switch	SM17	Load Adjustment Knob		1	
5	4	5. Load adjustment, Switch	SM21	Switch Cover		1	
5	5	5. Load adjustment, Switch	SM22	Load Spring Holder Plate		1	
5	6	5. Load adjustment, Switch	SM26	Damper Tube Clamp		2	
5	7	5. Load adjustment, Switch	SM27	Damper Tube Clamp Collar		2	
5	8	5. Load adjustment, Switch	SM31	Damper	Extension	1	
5	9	5. Load adjustment, Switch	SM39	Damper Bracket		1	
5	10	5. Load adjustment, Switch	SM42	Load Spring Guide		1	
5	11	5. Load adjustment, Switch	SM43	Clamp Rubber	With double-sided tape	2	
5	12	5. Load adjustment, Switch	SM15	Switch Plate		1	
5	13	5. Load adjustment, Switch	SL56	Thermal Protector	(4A)	1	
5	14	5. Load adjustment, Switch	SJ11	Breaker Nut		1	
5	15	5. Load adjustment, Switch	SJ99	Switch	(15A/4P)	1	
5	16	5. Load adjustment, Switch	SL66	ON-OFF Sticker	For 180A	1	
5	17	5. Load adjustment, Switch	SM69	Reset Button Sticker	For 270A/English	1	
5	18	5. Load adjustment, Switch	SL79	Thermal Protector Sticker		1	
5	19	5. Load adjustment, Switch	#0030	Lead Wire		1	
5	20	5. Load adjustment, Switch	SJ16	Cable Clip		5	
5	21	5. Load adjustment, Switch	SK30	Load Spring		3	MISUMI SWM22-125
5	22	5. Load adjustment, Switch	SM72	Spiral Tube	(300L)	1	
5	23	5. Load adjustment, Switch	SK65	Flat Washer L	(M10 Φ30 t2.5)	1	
5	24	5. Load adjustment, Switch	SL30	Cable Clamp	(ST-M20-B)	1	
5	26	5. Load adjustment, Switch	SL57	Cabletyre Cord	(220V)	1	
5	27	5. Load adjustment, Switch	S609	Cord Bush		1	
5	28	5. Load adjustment, Switch	SM40	Damper Bracket Collar		1	
5	29	5. Load adjustment, Switch	SM34	Screw Plug	(M32x1.5)	1	
5	30	5. Load adjustment, Switch	SM73	Motor Cord 220V	For 270A	1	
5	31	5. Load adjustment, Switch	W062	Hex Socket Head Cap Screw	(M6x16)	2	
5	32	5. Load adjustment, Switch	W065	Hex Socket Head Cap Screw	(M6x30)	1	
5	33	5. Load adjustment, Switch	W003	Hex Socket Head Cap Screw	(M10x30)	1	
5	34	5. Load adjustment, Switch	W005	Hex Socket Head Cap Screw	(M10x55 Full Thread)	1	
5	35	5. Load adjustment, Switch	WA27	Hex Socket Button Head Screw	(M6x16)	4	
5	36	5. Load adjustment, Switch	W252	Pan Head Machine Screw	(M5x10)	8	
5	37	5. Load adjustment, Switch	W753	Hex Socket Set Screw	(Cup Point M5x8)	2	
5	38	5. Load adjustment, Switch	WE10	U Nut	(M10)	1	
5	39	5. Load adjustment, Switch	WG5A	Spring Washer	(M5) Black	10	
5	40	5. Load adjustment, Switch	WG6A	Spring Washer	(6)	7	
5	41	5. Load adjustment, Switch	WGB0	Spring Washer	(M10) Black	2	
5	42	5. Load adjustment, Switch	WI03	Flat Washer	(M10) Black	1	
5	43	5. Load adjustment, Switch	SM75	Cut Speed Controller Sticker	English	1	
5	44	5. Load adjustment, Switch	SM77	Valve Knob Sticker	Round	1	
5	45	5. Load adjustment, Switch	SM78	Valve Knob Sticker	Oblong	1	
5	46	5. Load adjustment, Switch	W241	Pan Head Machine Screw	(M4x8)	2	
5	47	5. Load adjustment, Switch	WG4A	Spring Washer	(4)	2	
5	48	5. Load adjustment, Switch	SM92	Damper Dust-protective Plate		1	
5	49	5. Load adjustment, Switch	SM93	Damper Dust-protective Plate Block		1	
5	50	5. Load adjustment, Switch	W053	Hex Socket Head Cap Screw	(M5x12)	2	
5	51	5. Load adjustment, Switch	SM68	Switch Set	(220V)	1 Set	No.12-19

XB270A - 6. Gear, Wheels



Page No.	Item No.	Page Title	Part No.	Part Name	Spec.	Q'ty	Remarks
6	1	6. Gear, Wheels	SM09	Main Shaft Clamp (A)		1	
6	2	6. Gear, Wheels	SM10	Main Shaft Clamp (B)		1	
6	3	6. Gear, Wheels	SM11	Spindle (A)		1	
6	4	6. Gear, Wheels	SM12	Spindle (B)		1	
6	5	6. Gear, Wheels	SM20	Main Shaft Pin		1	
6	6	6. Gear, Wheels	SM30	Main Shaft		1	
6	7	6. Gear, Wheels	SM37	Wheel		4	
6	8	6. Gear, Wheels	SM38	Suspension Bolt		4	
6	9	6. Gear, Wheels	SK65	Flat Washer L	(M10 Φ30 t2.5)	6	
6	10	6. Gear, Wheels	S609	Cord Bush		1	
6	11	6. Gear, Wheels	W084	Hex Socket Head Cap Screw	(M8x35)	4	
6	12	6. Gear, Wheels	W087	Hex Socket Head Cap Screw	(M8x60)	2	
6	13	6. Gear, Wheels	W004	Hex Socket Head Cap Screw	(M10x40 Full Thread)	1	
6	14	6. Gear, Wheels	WA31	Hex Socket Button Head Screw	(M10x15)	6	
6	15	6. Gear, Wheels	SMA5	Hexagonal Head Bolt	(M10x60 Full Thread/Black)	1	
6	16	6. Gear, Wheels	W782	Hex Socket Set Screw	(Cup Point M8x10)	1	
6	17	6. Gear, Wheels	WB12	Nut	(M12)	4	
6	18	6. Gear, Wheels	WGB0	Spring Washer	(10)	6	
6	19	6. Gear, Wheels	SJ77	Wheel Washer A		4	
6	20	6. Gear, Wheels	WY09	E-Type Ring	(9)	2	
6	21	6. Gear, Wheels	WL54	Roll Pin	(φ5x20)	2	
6	22	6. Gear, Wheels	WL5B	Roll Pin	(φ5x28)	1	
6	23	6. Gear, Wheels	ZB28	Hexagonal Wrench Key	(8)	1	
6	24	6. Gear, Wheels	WE20	Cap Nut	(M10)	1	

XB270A - 7. Vice



Page No.	Item No.	Page Title	Part No.	Part Name	Spec.	Q'ty	Remarks
7	1	7. Vice	SM01	Base		1	
7	2	7. Vice	SM02	Vice (A)		1	
7	3	7. Vice	SM03	Vice (B)		1	
7	4	7. Vice	SM04	Vice Plate (A)		2	
7	5	7. Vice	SM05	Vice Feed Screw		1	
7	6	7. Vice	SM06	Upper Clamp		1	
7	7	7. Vice	SM07	Upper Clamp Shaft		1	
7	8	7. Vice	SM08	Vice Plate (B)		2	
7	9	7. Vice	SM14	Vice Plate (C)		1	
7	10	7. Vice	SM18	D Nut		1	
7	11	7. Vice	SM19	Vice Stopper		1	
7	12	7. Vice	SM23	Vice Spacer		1	
7	13	7. Vice	SM24	Angle Index (A)		1	
7	14	7. Vice	SM25	Angle Index (B)		1	
7	15	7. Vice	SM28	Vice Block		1	
7	16	7. Vice	SM29	Vice Block Plate		1	
7	17	7. Vice	SM32	Handle		1	
7	18	7. Vice	SM33	Upper Clamp Screw		1	
7	19	7. Vice	SM35	Knob 3		1	
7	20	7. Vice	SM41	E Nut		1	
7	21	7. Vice	SM44	Upper Clamp Screw Block		1	
7	22	7. Vice	SM64	Handle		1	
7	23	7. Vice	WL34	Roll Pin	(φ3x12)	2	
7	24	7. Vice	SJ02	Bush Bolt		1	
7	25	7. Vice	SJ04	Thrust Washer		1	
7	26	7. Vice	WA61	Wing Bolt	(M8x15)	3	
7	27	7. Vice	W060	Hex Socket Head Cap Screw	(M6x10)	1	
7	28	7. Vice	W062	Hex Socket Head Cap Screw	(M6x16)	23	
7	29	7. Vice	W066	Hex Socket Head Cap Screw	(M6x35)	2	
7	30	7. Vice	W084	Hex Socket Head Cap Screw	(M8x35 Full Thread/Black)	1	
7	31	7. Vice	SMA6	Hex Socket Head Cap Screw	(M10x35)	1	
7	32	7. Vice	SMA7	Hex Socket Head Cap Screw	(M12x25)	1	
7	33	7. Vice	SMA8	Hexagonal Head Bolt	(M12x45 Full Thread)	3	
7	34	7. Vice	W360	Flat Head Machine Screw	(M6x16)	2	
7	35	7. Vice	W546	Truss Head Machine Screw	(M4x6)	4	
7	36	7. Vice	W889	Hex Socket Set Screw	(Cup Point M8x30)	1	
7	37	7. Vice	WC08	Nut	(M8)	1	
7	38	7. Vice	WC12	Nut	(M12)	1	
7	39	7. Vice	WL58	Roll Pin	(φ5x40)	1	
7	40	7. Vice	WG8A	Spring Washer	(M8) Black	1	
7	41	7. Vice	WZ13	Spring Washer	(12)	4	
7	42	7. Vice	WZG3	Flat Washer	(M12) Black	4	
7	43	7. Vice	WG6A	Spring Washer	(M6) Black	1	



REX INDUSTRIES CO., LTD.

Overseas Sales Dept. (Head Office & Factory):

1-9-3, Hishiyahigashi, Higashi Osaka 578-0948, Japan

Tel.: +81 - (0)72 - 961 - 9820 Fax.: +81 - (0)72 - 961 - 9878

URL <http://www.rexind.co.jp>