

50/60Hz

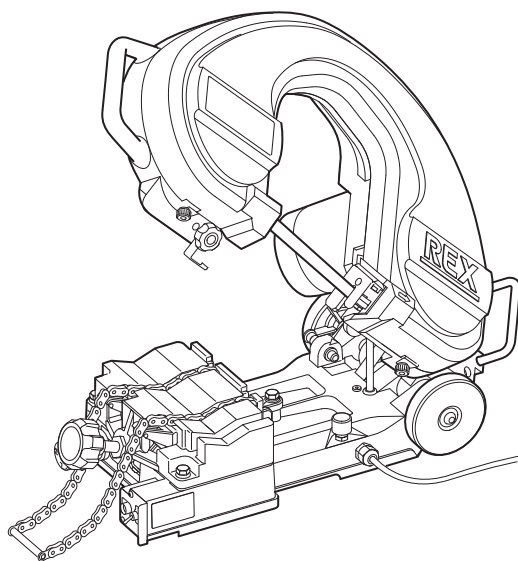
REX Band Saw series

MANTIS 180 WS/180 WA

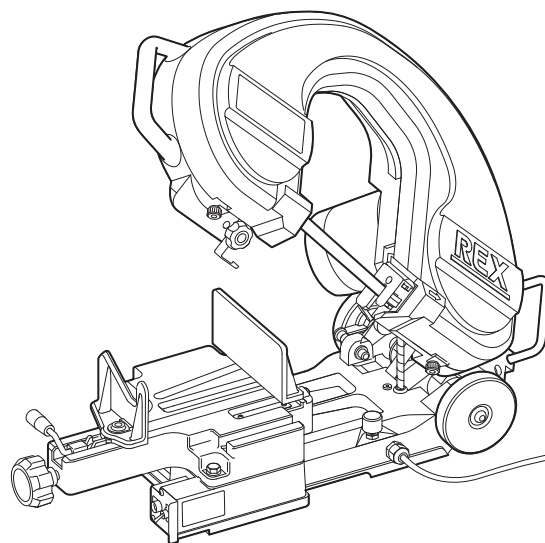
XB180WS - XB180WA

PARTS LIST

As of September 2008



XB180WS
(CHAIN VICE)



XB180WA
(FLAT VICE)

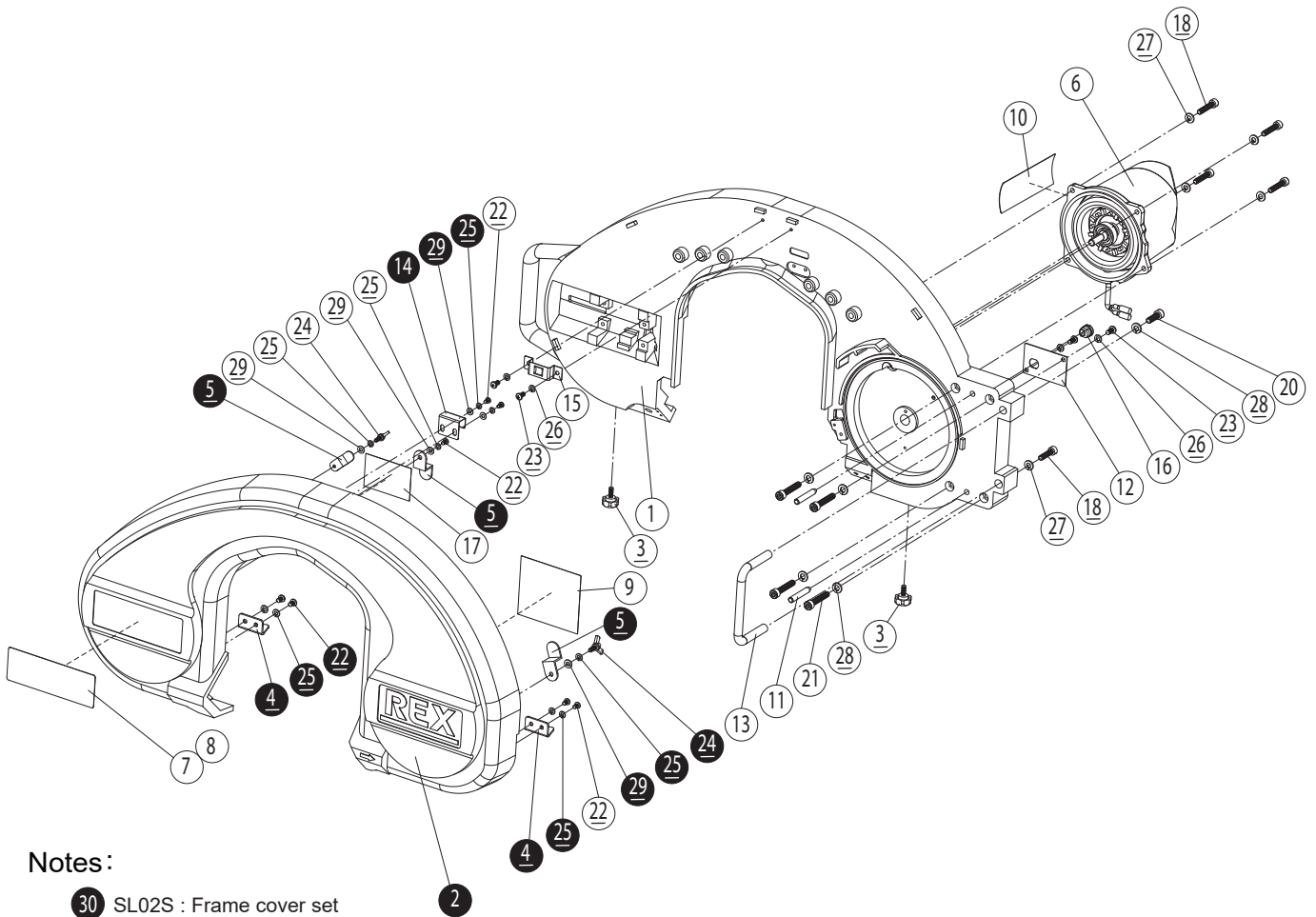
CONTENTS

1. Frame · Motor
2. Pulley · Tension
3. SELI
4. Load adjustment · Switch
5. Main shaft · Hinge
6. Chain vice
7. Flat vice

REX

MANTIS XB180WS / WA

1. Frame • Motor



Notes :

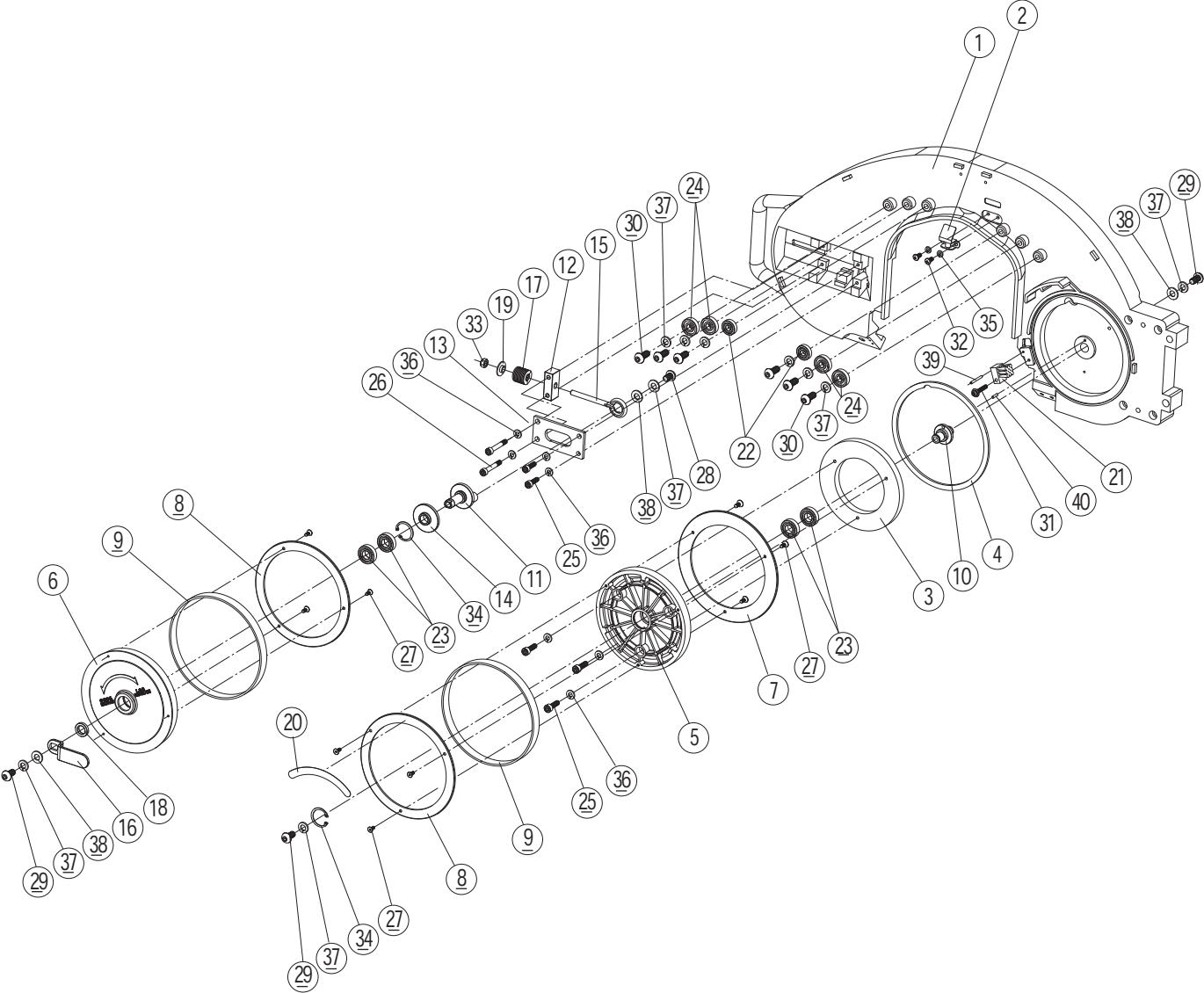
● 30 SL02S : Frame cover set

○ Same parts are found elsewhere on the page

Page No.	Item No.	Page Title	Part No.	Part Name	Spec.	Quantity	Remarks
1	1	1. Frame and Motor	SL01	Frame		1	
1	2	1. Frame and Motor*	SL02	Frame Cover		1	set of No.30 (SL02S)
1	3	1. Frame and Motor	SL03	Knob		2	
1	4	1. Frame and Motor*	SL38	Cover Plate		2	set of No.30 (SL02S)
1	5	1. Frame and Motor*	SL41	Blade Clip		3	set of No.30 (SL02S)
1	6	1. Frame and Motor	SL51B	Motor (100V)		1	
1	6	1. Frame and Motor	SL52B	Motor (220V)		1	
1	6	1. Frame and Motor	SL53	Motor (115V)		1	
1	7	1. Frame and Motor	SL61	Name Plate Sticker (XB180WS Chain Vice)-Japanese		1	
1	7	1. Frame and Motor	SL71	Name Plate Sticker (XB180WS Chain Vice)-English		1	
1	7	1. Frame and Motor	SL91	Name Plate Sticker (XB180WS Chain Vice)-WH		1	
1	8	1. Frame and Motor	SL62	Name Plate Sticker (XB180WS Flat Vice)-Japanese		1	
1	8	1. Frame and Motor	SL72	Name Plate Sticker (XB180WS Flat Vice)-English		1	
1	8	1. Frame and Motor	SL92	Name Plate Sticker (XB180WS Flat Vice)-WH		1	
1	9	1. Frame and Motor	SL63	Sticker (Saw Blade Housing)-Japanese		1	
1	9	1. Frame and Motor	SL73	Sticker (Saw Blade Housing)-English/WH		1	
1	10	1. Frame and Motor	SL65	Load Adjustment Sticker (large, with Table For 180)-Japanese		1	
1	10	1. Frame and Motor	SL75	Load Adjustment Sticker (large, with Table For 180)-English/WH		1	
1	11	1. Frame and Motor	SJ37	Positioning Pin		2	
1	12	1. Frame and Motor	SJ39	Connector Cover		1	
1	13	1. Frame and Motor	SJ40	Grip		1	
1	14	1. Frame and Motor*	SJ42	Frame Hook		1	set of No.30 (SL02S)
1	15	1. Frame and Motor	SJ43	Catch Plate		1	
1	16	1. Frame and Motor	SK09	Cable-lock		1	
1	17	1. Frame and Motor	SK34	Sticker (Blade Installation)-Japanese		1	
1	17	1. Frame and Motor	SL68	Sticker (Blade Installation)-English/WH		1	
1	18	1. Frame and Motor	W06B	Socket Head Cap Screw	M6*25	5	
4	19	1. Frame and Motor	W065	Socket Head Cap Screw	M6*30	4	
1	20	1. Frame and Motor	W083	Socket Head Cap Screw	M8*25	1	
1	21	1. Frame and Motor	SK50	Socket Head Cap Screw	M8*45	4	
1	22	1. Frame and Motor*	W242	Round Head Machine Screw	M4*10 Black	7	set of No.30 (SL02S)
1	23	1. Frame and Motor	W252	Round Head Machine Screw	M5*10 Black	4	
1	24	1. Frame and Motor*	SLA1	Wing Bolt	*Old No. #0022 M4*10	2	set of No.30 (SL02S)
1	25	1. Frame and Motor*	WG4A	Spring Washer	4 Black	9	set of No.30 (SL02S)
1	26	1. Frame and Motor	WG5A	Spring Washer	5 Black	4	
1	27	1. Frame and Motor	WG6A	Spring Washer	6 Black	5	
1	28	1. Frame and Motor	WG8A	Spring Washer	8 Black	5	
1	29	1. Frame and Motor*	WI42	Flat Washer	4 Black	5	set of No.30 (SL02S)
1	30	1. Frame and Motor*	SL02S	Frame Cover Set		1 set	set of No.2,4,5,14,22,24,25,29

MANTIS XB180WS / WA

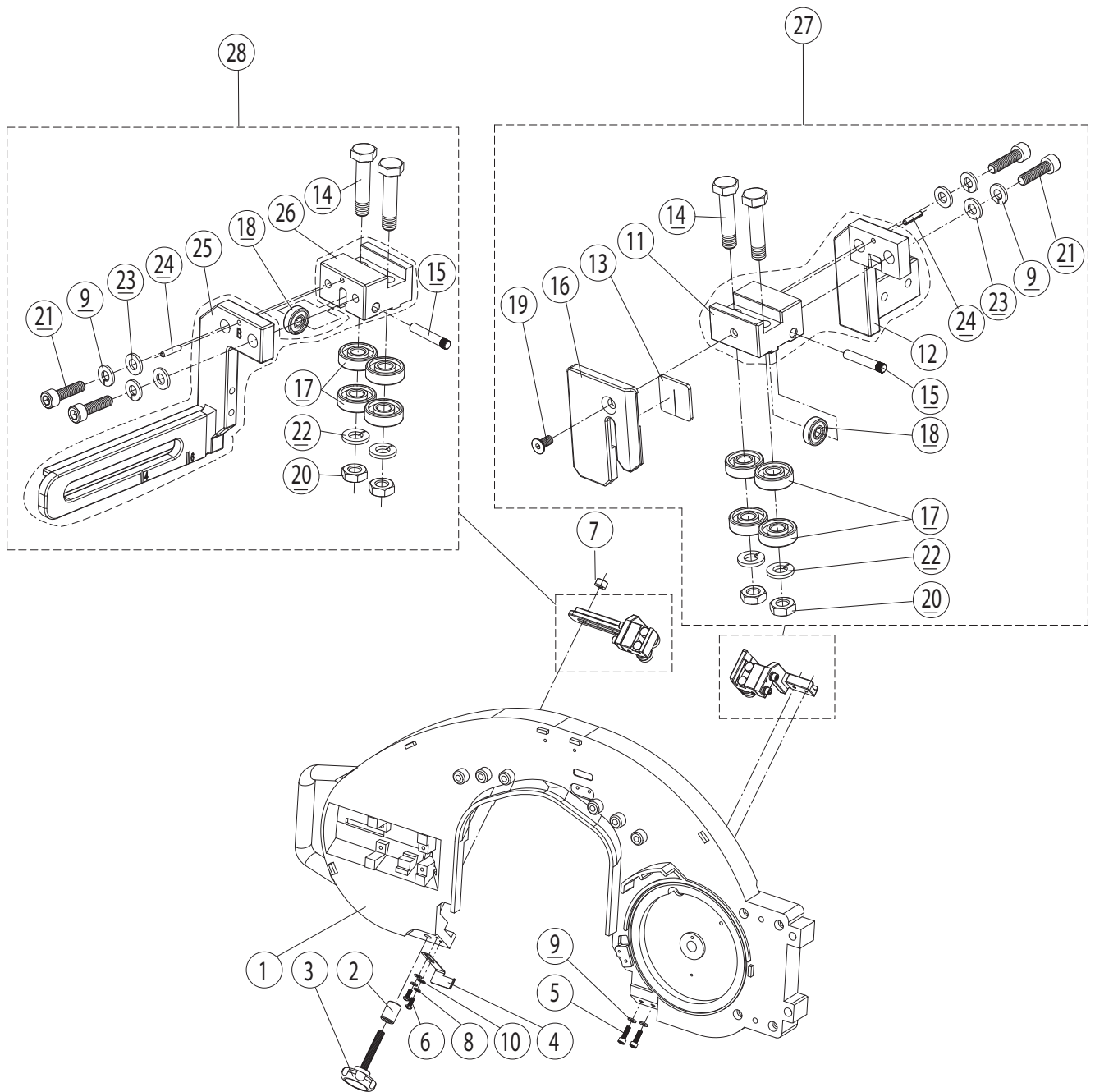
2. Pulley • Tension



Page No.	Item No.	Page Title	Part No.	Part Name	Spec.	Quantity	Remarks
2	1	2. Pulley & Tension	SL01	Frame		1	
2	2	2. Pulley & Tension	SL42S	Blade Anti-Slip Roller		1set	set of No.2a - d
2	2-a	2. Pulley & Tension	SL42	Roller Holder		1	
2	2-b	2. Pulley & Tension	SL43	Stopper Roller		1	
2	2-c	2. Pulley & Tension	SL44	Roller Pin		1	
2	2-d	2. Pulley & Tension	WY03	E-shaped Snap Ring	M3	2	
2	3	2. Pulley & Tension	SJ36	Gear		1	
2	4	2. Pulley & Tension	SJ44	Dustproof Felt (set of 3)		1set	
2	5	2. Pulley & Tension	SJ55	Pulley A		1	
2	6	2. Pulley & Tension	SJ56	Pulley B		1	
2	7	2. Pulley & Tension	SJ57	Pulley Plate A		1	
2	8	2. Pulley & Tension	SJ58	Pulley Plate B		2	
2	9	2. Pulley & Tension	SJ59	Rubber Ring		2	
2	10	2. Pulley & Tension	SJ79	Pulley A Shaft		1	
2	11	2. Pulley & Tension	SJ80	Pulley B Shaft		1	
2	12	2. Pulley & Tension	SJ81	Rod Guide		1	
2	13	2. Pulley & Tension	SJ82	Tension Plate		1	
2	14	2. Pulley & Tension	SJ83	Shaft B Bush		1	
2	15	2. Pulley & Tension	SJ84	Tension Rod		1	
2	16	2. Pulley & Tension	SJ85	Tension Lever		1	
2	17	2. Pulley & Tension	SJ86	Tension Spring		1	
2	18	2. Pulley & Tension	SJ87	Collar		1	
2	19	2. Pulley & Tension	SJ88	Spring Cap		1	
2	20	2. Pulley & Tension	SK35	Sticker (Pulley)-Japanese		1	
2	20	2. Pulley & Tension	SL69	Sticker (Pulley)-English/WH		1	
2	21	2. Pulley & Tension	SL47	Brush		1	
2	22	2. Pulley & Tension	S374	Bearing	6000ZZ	2	
2	23	2. Pulley & Tension	SK53	Bearing	6002ZZ	4	
2	24	2. Pulley & Tension	S701	Bearing	6200ZZ	4	
2	25	2. Pulley & Tension	W063	Socket Head Cap Screw	M6*20	5	
2	26	2. Pulley & Tension	W067	Socket Head Cap Screw	M6*40	2	
2	27	2. Pulley & Tension	SK56	Hex Socket Countersunk Bolt	M4*10	9	
2	28	2. Pulley & Tension	WA31	Hex Socket Button Head Cap Screw	M10*15	1	
2	29	2. Pulley & Tension	SK54	Hex Socket Button Head Cap Screw	M10*20	3	
2	30	2. Pulley & Tension	SK57	Hex Socket Button Head Cap Screw	M10*25	6	
2	31	2. Pulley & Tension	SMA3	Round Head Machine Screw (with washer)	Misumi NSET5-30	1	*Old No. #0023
2	32	2. Pulley & Tension	W252	Round Head Machine Screw	M5*10 Black	2	
2	33	2. Pulley & Tension	WE08	U Nut	M8	1	
2	34	2. Pulley & Tension	SK55	C-shaped Snap Ring		32	
2	35	2. Pulley & Tension	WG5A	Spring Washer	5 Black	2	
2	36	2. Pulley & Tension	WG6A	Spring Washer	6 Black	7	
2	37	2. Pulley & Tension	WGB0	Spring Washer	10 Black	10	
2	38	2. Pulley & Tension	WI03	Flat Washer	10 Black	3	
2	39	2. Pulley & Tension	WL3B	Spring Pin	3*28	1	

MANTIS XB180WS / WA

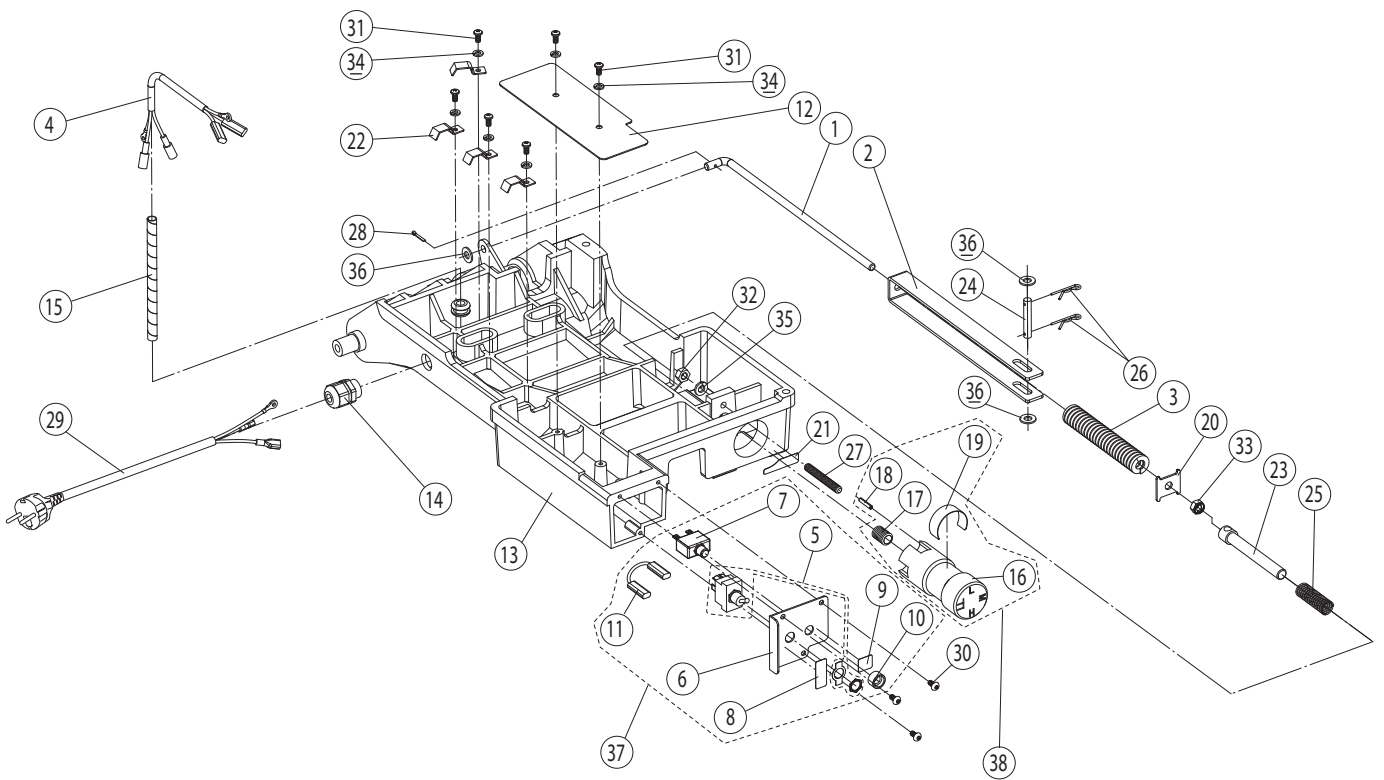
3. SELI



Page No.	Item No.	Page Title	Part No.	Part Name	Spec.	Quantity	Remarks
3	1	3. SELI	SL01	Frame		1	
3	2	3. SELI	SL06	Collar		1	
3	3	3. SELI	SL48	Knob		1	
3	4	3. SELI	SJ53	Switch Kicker		1	
3	5	3. SELI	W063	Socket Head Cap Screw	M6*20	2	
3	6	3. SELI	W242	Round Head Machine Screw	M4*10 Black	2	
3	7	3. SELI	WC10	Hex Nut	M10 1-type Black	1	
3	8	3. SELI	WG4A	Spring Washer	4 Black	2	
3	9	3. SELI	WG6A	Spring Washer	6 Black	6	
3	10	3. SELI	WI42	Flat Washer	4 Black	2	
3	11	3. SELI	SJ45	SELI A		1	set of No.27
3	12	3. SELI	SJ47	SELI Holder A		1	set of No.27
3	13	3. SELI	SJ50	Scraper		1	
3	14	3. SELI	SJ51	SELI Shaft A		4	
3	15	3. SELI	SJ52	SELI Shaft B		2	
3	16	3. SELI	SK28	Contour Plate B		1	
3	17	3. SELI	SK59	Bearing	608ZZ	8	
3	18	3. SELI	S703	Bearing	625ZZ	2	
3	19	3. SELI	W346	Oval Socket Head Cap Screw	M5*10	1	
3	20	3. SELI	WD08	Hex Nut	M8 3-type Black	4	
3	21	3. SELI	SK60	Socket Head Cap Screw	M6*22	4	Old No.#0038
3	22	3. SELI	WG8A	Spring Washer	8 Black	4	
3	23	3. SELI	WJ16	Washer	6 Black	4	
3	24	3. SELI	WL3A	Spring Pin	3*14	2	
3	25	3. SELI	SL04	SELI Holder B		1	set of No.28
3	26	3. SELI	SJ46	SELI B		1	set of No.28
3	27	3. SELI	SL60S	SELI A Set		1set	Old No.SJ47S
3	28	3. SELI	SL04S	SELI B Set		1set	

MANTIS XB180WS / WA

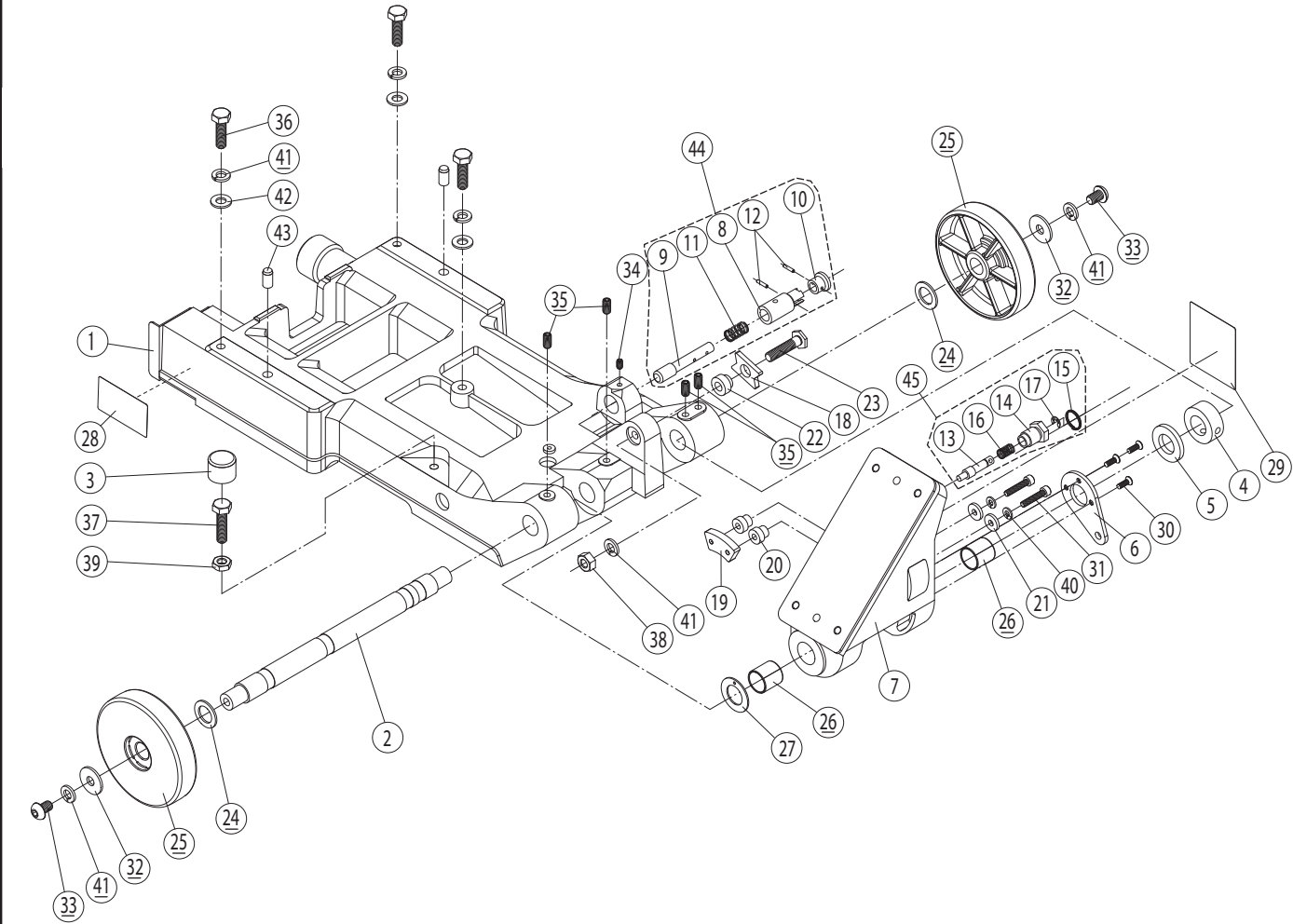
4. Load adjustment - Switch



Page No.	Item No.	Page Title	Part No.	Part Name	Spec.	Quantity	Remarks
4	1	4. Load Control & Switch	SL07	Load Rod		1	
4	2	4. Load Control & Switch	SL08	Load Spring Holder		1	
4	3	4. Load Control & Switch	SL09	Load Spring	Misumi SWH22-150	1	
4	4	4. Load Control & Switch	SL10	Motor cord 180 for 100V, 115V		1	
4	4	4. Load Control & Switch	SL78	Motor cord 180 for 220V		1	
4	5	4. Load Control & Switch	SJ99	Switch		1	
4	6	4. Load Control & Switch	SL12	Switch Plate		1	
4	7	4. Load Control & Switch	SL15	Thermal Protector(7A)-Japanese/WH		1	
4	7	4. Load Control & Switch	SL56	Thermal Protector(4A)-English		1	
4	8	4. Load Control & Switch	SL66	Sticker(ON - OFF For 180)		1	
4	9	4. Load Control & Switch	SL67	Sticker(Recovery Button For 180)-Japanese		1	
4	9	4. Load Control & Switch	SL77	Sticker(Recovery Button For 180)-English/WH		1	
4	10	4. Load Control & Switch	SJ11	Breaker Nut		1	
4	11	4. Load Control & Switch	-	Lead Wire		1	
4	12	4. Load Control & Switch	SL13	Switch Cover		1	
4	13	4. Load Control & Switch	SL14	Base		1	
4	14	4. Load Control & Switch	SL30	Cable Clamp		1	
4	15	4. Load Control & Switch	SL05	Spiral Tube (150L)		1	
4	16	4. Load Control & Switch	SL45	Load Adjustment Knob 180		1	
4	17	4. Load Control & Switch	-	Helisert	M12-1.75-1.5D	1	
4	18	4. Load Control & Switch	-	Spring Pin	4*20	1	
4	19	4. Load Control & Switch	-	Sticker(HML)		1	
4	20	4. Load Control & Switch	SL46	Load Rod Guide		1	
4	21	4. Load Control & Switch	SL64	Sticker(Weight Selection For 180)-Japanese		1	
4	21	4. Load Control & Switch	SL74	Sticker(Weight Selection For 180)-English/WH		1	
4	22	4. Load Control & Switch	SJ16	Cable Clip		4	
4	23	4. Load Control & Switch	SJ90	Load Shaft		1	
4	24	4. Load Control & Switch	SJ94	Load Shaft Pin		1	
4	25	4. Load Control & Switch	SJ95	Load Shaft Spring		1	
4	26	4. Load Control & Switch	WN22	Snap Pin	8	2	
4	27	4. Load Control & Switch	SK70	Hex Socket Set Screw	Cup point M8*60	1	
4	28	4. Load Control & Switch	WN12	Cotter pin	3*14	1	
4	29	4. Load Control & Switch	SJ97	Power Cord for 100V		1	
4	29	4. Load Control & Switch	SL57	Power Cord for 220V		1	
4	29	4. Load Control & Switch	SL58	Power Cord for 115V		1	
4	30	4. Load Control & Switch	SK62	Hex Socket Button Head Cap Screw	M5*10	3	Old No.#0017
4	31	4. Load Control & Switch	W252	Round Head Cap Screw	M5*10 Black	6	
4	32	4. Load Control & Switch	WC08	Hex Nut	M8 Black	1	
4	33	4. Load Control & Switch	WE08	U Nut	M8	1	
4	34	4. Load Control & Switch	WG5A	Spring Washer	5 Black	6	
4	35	4. Load Control & Switch	WG8A	Spring Washer	8 Black	1	
4	36	4. Load Control & Switch	WZ11	Flat washer	8 Black	3	
4	37	4. Load Control & Switch	SL12S	Switch Set for100V		1set	set of No.5 - 11
4	37	4. Load Control & Switch	SL54S	Switch Set for 220V		1set	set of No.5 - 11
4	37	4. Load Control & Switch	SL55S	Switch Set for 115V		1set	set of No.5 - 11
4	38	4. Load Control & Switch	SL45S	Load Adjustment Knob Unit 180		1set	set of No.16 - 19

MANTIS XB180WS / WA

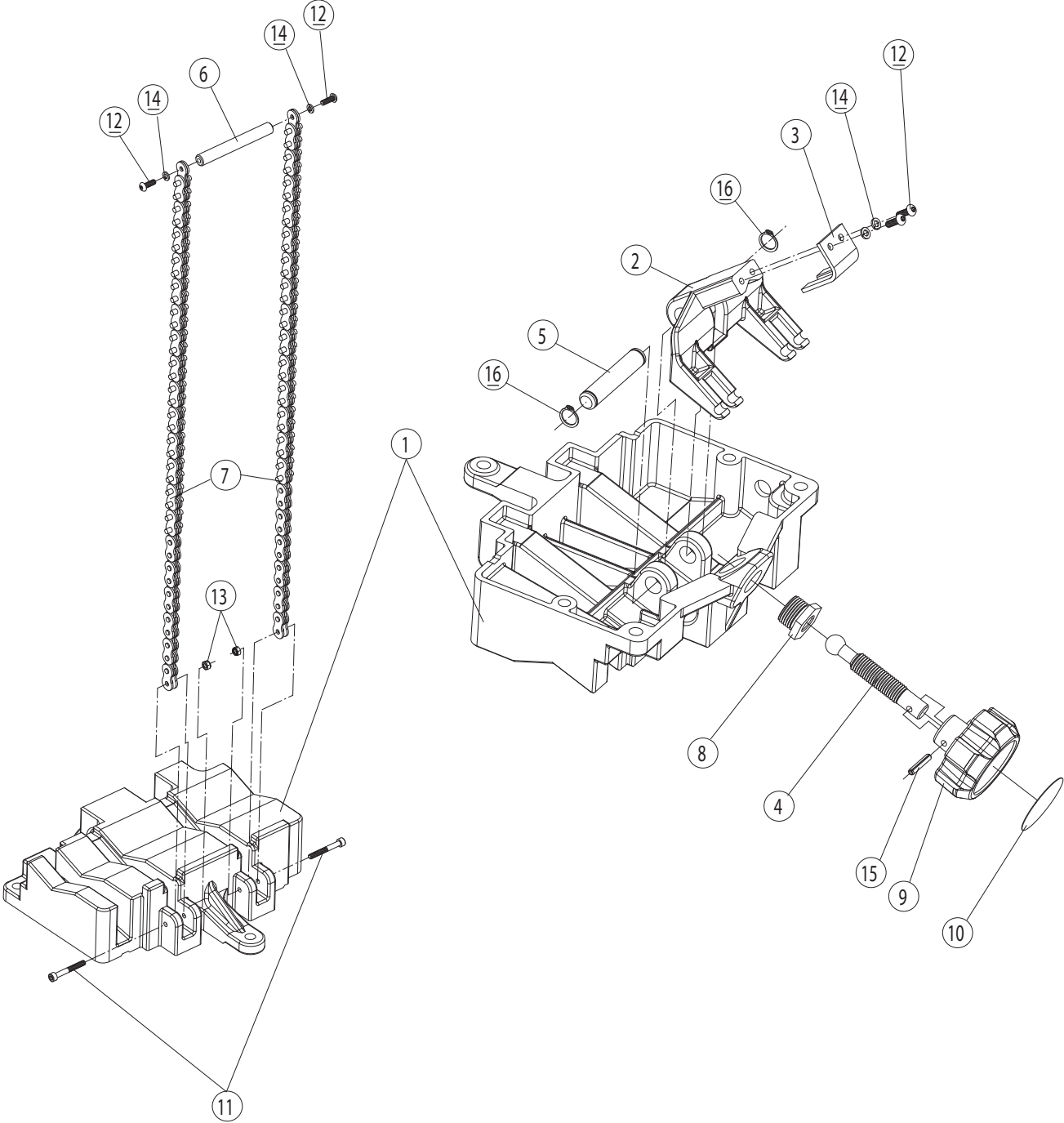
5. Main Shaft - Hinge



Page No.	Item No.	Page Title	Part No.	Part Name	Spec.	Quantity	Remarks
5	1	5. Main Shaft & Hinge	SL14	Base		1	
5	2	5. Main Shaft & Hinge	SL37	Main Shaft		1	
5	3	5. Main Shaft & Hinge	SL39	Bolt Cap		1	
5	4	5. Main Shaft & Hinge	SL40	Main Shaft Collar		1	
5	5	5. Main Shaft & Hinge	SL49	Thrust Washer		1	
5	6	5. Main Shaft & Hinge	SL50	Load Plate		1	
5	7	5. Main Shaft & Hinge	SJ54	Hinge		1	
5	8	5. Main Shaft & Hinge	SJ60	Locking Pin Collar		1	
5	9	5. Main Shaft & Hinge	SJ61	Locking Pin		1	
5	10	5. Main Shaft & Hinge	SJ68	Locking Pin Knob		1	
5	11	5. Main Shaft & Hinge	SJ73	Locking Pin Spring		1	
5	12	5. Main Shaft & Hinge	WL3A	Roll Pin	3*14mm	2	
5	13	5. Main Shaft & Hinge	SJ62	Kick Pin		1	
5	14	5. Main Shaft & Hinge	SJ63	Kick Pin Collar		1	
5	15	5. Main Shaft & Hinge	SJ71	Ring		1	
5	16	5. Main Shaft & Hinge	SJ72	Kick Pin Spring		1	
5	17	5. Main Shaft & Hinge	WY06	E-shaped Snap Ring	6mm	1	
5	18	5. Main Shaft & Hinge	SJ64	Stopper Cam		1	
5	19	5. Main Shaft & Hinge	SJ65	Cam Plate		1	
5	20	5. Main Shaft & Hinge	SJ66	Plate Bush		2	
5	21	5. Main Shaft & Hinge	SJ67	Cam Plate Washer		2	
5	22	5. Main Shaft & Hinge	SJ69	Cam Bush		1	
5	23	5. Main Shaft & Hinge	SJ70	Cam Shaft		1	
5	24	5. Main Shaft & Hinge	SJ77	Wheel Washer A		2	
5	25	5. Main Shaft & Hinge	SJ78	Wheel		2	
5	26	5. Main Shaft & Hinge	SK36	Bush	LFZB22-25	2	
5	27	5. Main Shaft & Hinge	SK37	Thrust Washer	LFZW20	1	
5	28	5. Main Shaft & Hinge	SK43	Sticker(Motor Protection Device)-Japanese		1	
5	28	5. Main Shaft & Hinge	SL79	Sticker(Motor Protection Device)-English/WH		1	
5	29	5. Main Shaft & Hinge	SK47	Sticker (Frame Lock)		1	
5	29	5. Main Shaft & Hinge	SL80	Frame Locking Sticker-English/WH		1	
5	30	5. Main Shaft & Hinge	W360	Oval Socket Head Cap Screw	M5*15	3	
5	31	5. Main Shaft & Hinge	W065	Socket Head Cap Screw	M6*30	2	
5	32	5. Main Shaft & Hinge	SK65	Flat Washer (Large)	10 Black	2	
5	33	5. Main Shaft & Hinge	WA31	Hex Socket Button Head Cap Screw	M10*15	2	
5	34	5. Main Shaft & Hinge	W766	Hex Socket Set Screw	Cup point M6*10	1	
5	35	5. Main Shaft & Hinge	W785	Hex Socket Set Screw	Cup point M8*16	4	
5	36	5. Main Shaft & Hinge	SK77	Hex Bolt	M10*35 Black	3	Old No.#0018
5	37	5. Main Shaft & Hinge	SLA5	Hex Bolt	M10*40 Black	1	Old No.#0019
5	38	5. Main Shaft & Hinge	WC10	Hex Nut	M10 1-type Black	1	
5	39	5. Main Shaft & Hinge	WD10	Hex Nut	M10 3-type Black	1	
5	40	5. Main Shaft & Hinge	WG6A	Spring Washer	6 Black	2	
5	41	5. Main Shaft & Hinge	WGB0	Spring Washer	10 Black	6	
5	42	5. Main Shaft & Hinge	WI03	Washer	10 Black	3	
5	43	5. Main Shaft & Hinge	SLA6	Knock Pin	φ10±0.01×20	2	Old No.#0020
5	44	5. Main Shaft & Hinge	SJ61S	Locking Pin Unit		1set	set of No.8 - 12
5	45	5. Main Shaft & Hinge	SJ62S	Kick Pin Unit		1set	set of No.13 - 17

MANTIS XB180WS / WA

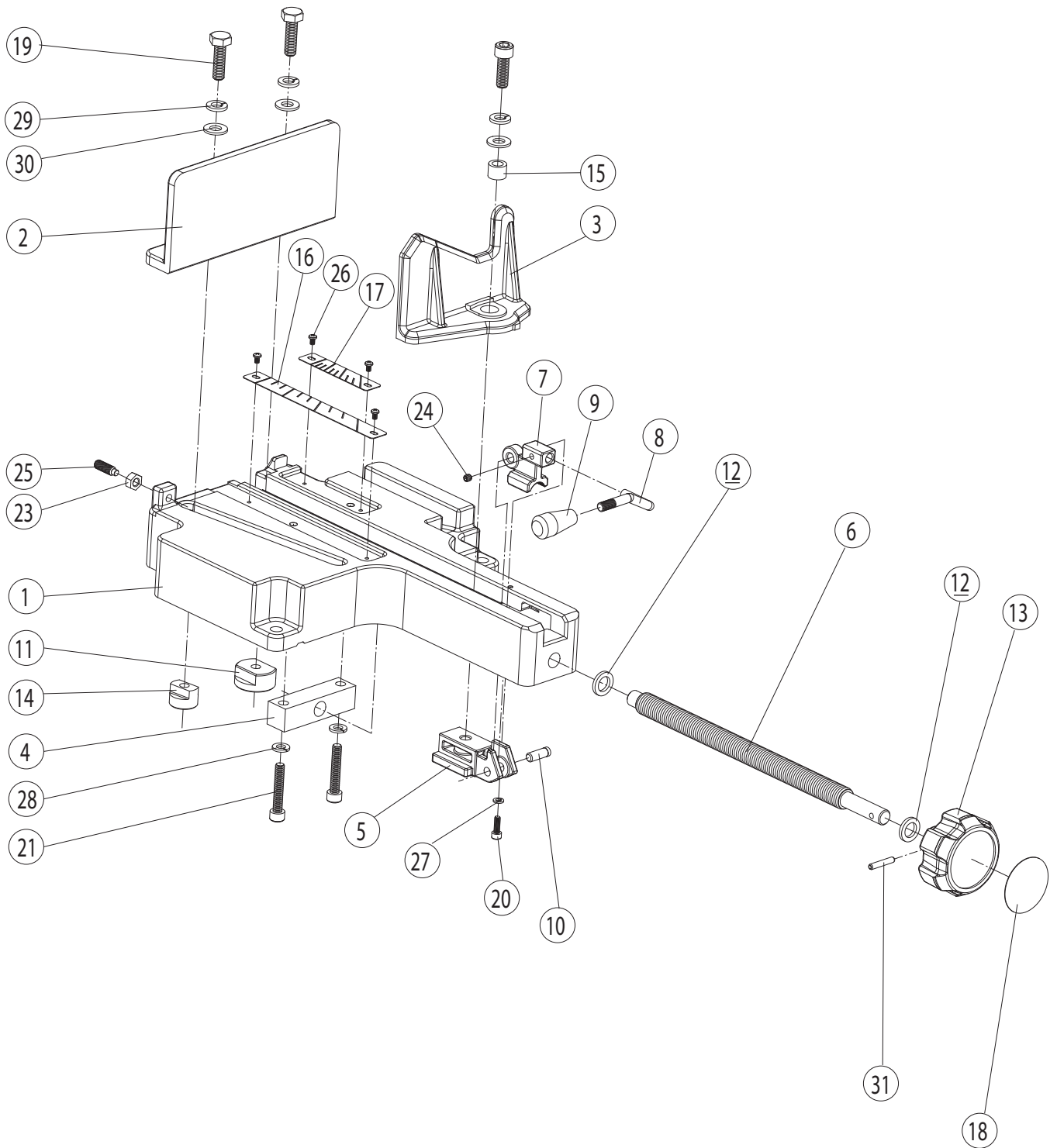
6. Chain vice



Page No.	Item No.	Page Title	Part No.	Part Name	Spec.	Quantity	Remarks
6	1	6. Chain Vice Unit	SL17	Chain Vice Stand		1	
6	2	6. Chain Vice Unit	SL18	Arm		1	
6	3	6. Chain Vice Unit	SL19	Arm Plate		1	
6	4	6. Chain Vice Unit	SL20	Feed Screw		1	
6	5	6. Chain Vice Unit	SL21	Arm Pin		1	
6	6	6. Chain Vice Unit	SL22	Chain Handle		1	
6	7	6. Chain Vice Unit	SL23	Leaf Chain		2 units	
6	8	6. Chain Vice Unit	SL24	Screw Bush		1	
6	9	6. Chain Vice Unit	SJ06	Handle		1	
6	10	6. Chain Vice Unit	SK46	Sticker (Knob)		1	
6	11	6. Chain Vice Unit	W05E	Socket Head Cap Screw	M5*40	2	
6	12	6. Chain Vice Unit	SLA7	Hex Socket Button Head Cap Screw	M5*15	4	Old No.#0021
6	13	6. Chain Vice Unit	WE05	U Nut	M5 Black	2	
6	14	6. Chain Vice Unit	WG5A	Spring Washer	5 Black	4	
6	15	6. Chain Vice Unit	WL5B	Roll Pin	5*28	1	
6	16	6. Chain Vice Unit	WW15	Snap Ring	15(For shaft)	2	

MANTIS XB180WS / WA

7. Flat vice



Page No.	Item No.	Page Title	Part No.	Part Name	Spec.	Quantity	Remarks
7	1	7. Flat Vice Unit	SL25	Flat Vice Stand		1	
7	2	7. Flat Vice Unit	SL26	Vice A		1	
7	3	7. Flat Vice Unit	SL27	Vice B		1	
7	4	7. Flat Vice Unit	SL28	Screw Holder		1	
7	5	7. Flat Vice Unit	SL29	Guide Block		1	
7	6	7. Flat Vice Unit	SL31	Feed Screw		1	
7	7	7. Flat Vice Unit	SL32	Half Nut		1	
7	8	7. Flat Vice Unit	SL33	Lever		1	
7	9	7. Flat Vice Unit	SL34	Grip		1	
7	10	7. Flat Vice Unit	SL35	Guide Block Pin		1	
7	11	7. Flat Vice Unit	SL36	Nut C		1	
7	12	7. Flat Vice Unit	SJ04	Thrust Washer		2	
7	13	7. Flat Vice Unit	SJ06	Handle		1	
7	14	7. Flat Vice Unit	SK20	Nut B		1	
7	15	7. Flat Vice Unit	SK23	Spacer		1	
7	16	7. Flat Vice Unit	SK26	Angle Index A		1	
7	17	7. Flat Vice Unit	SK27	Angle Index B		1	
7	18	7. Flat Vice Unit	SK46	Sticker (Knob)		1	
7	19	7. Flat Vice Unit	SK77	Hex Bolt	M10*35 Black	2	Old No.#0018
7	20	7. Flat Vice Unit	W051	Socket Head Cap Screw	M5*15	1	
7	21	7. Flat Vice Unit	W08B	Socket Head Cap Screw	M8*45	2	
7	22	7. Flat Vice Unit	W003	Socket Head Cap Screw	M10*30	1	
7	23	7. Flat Vice Unit	WC08	Hex Nut	M8 Black	1	
7	24	7. Flat Vice Unit	W762	Hex Socket Set Screw	Cup point M6*6	1	
7	25	7. Flat Vice Unit	W887	Hex Socket Set Screw	Full dog point M8*25	1	
7	26	7. Flat Vice Unit	W546	Truss Screw	M4*6 Black	4	
7	27	7. Flat Vice Unit	WG5A	Spring Washer	5	1	
7	28	7. Flat Vice Unit	WG8A	Spring Washer	8	2	
7	29	7. Flat Vice Unit	WGB0	Spring Washer	10 Black	3	
7	30	7. Flat Vice Unit	WI30	Flat Washer	10 Black	3	
7	31	7. Flat Vice Unit	WL5B	Roll Pin	5*28	1	

REX

REX INDUSTRIES CO., LTD.

Overseas Sales Dept. & Factory :

1-9-3, Hishiyahigashi, Higashi Osaka 578-0948, Japan

Tel.: +81 - (0)72 - 961 - 9820 Fax.: +81 - (0)72 - 961 - 9878

URL <http://www.rexind.co.jp>