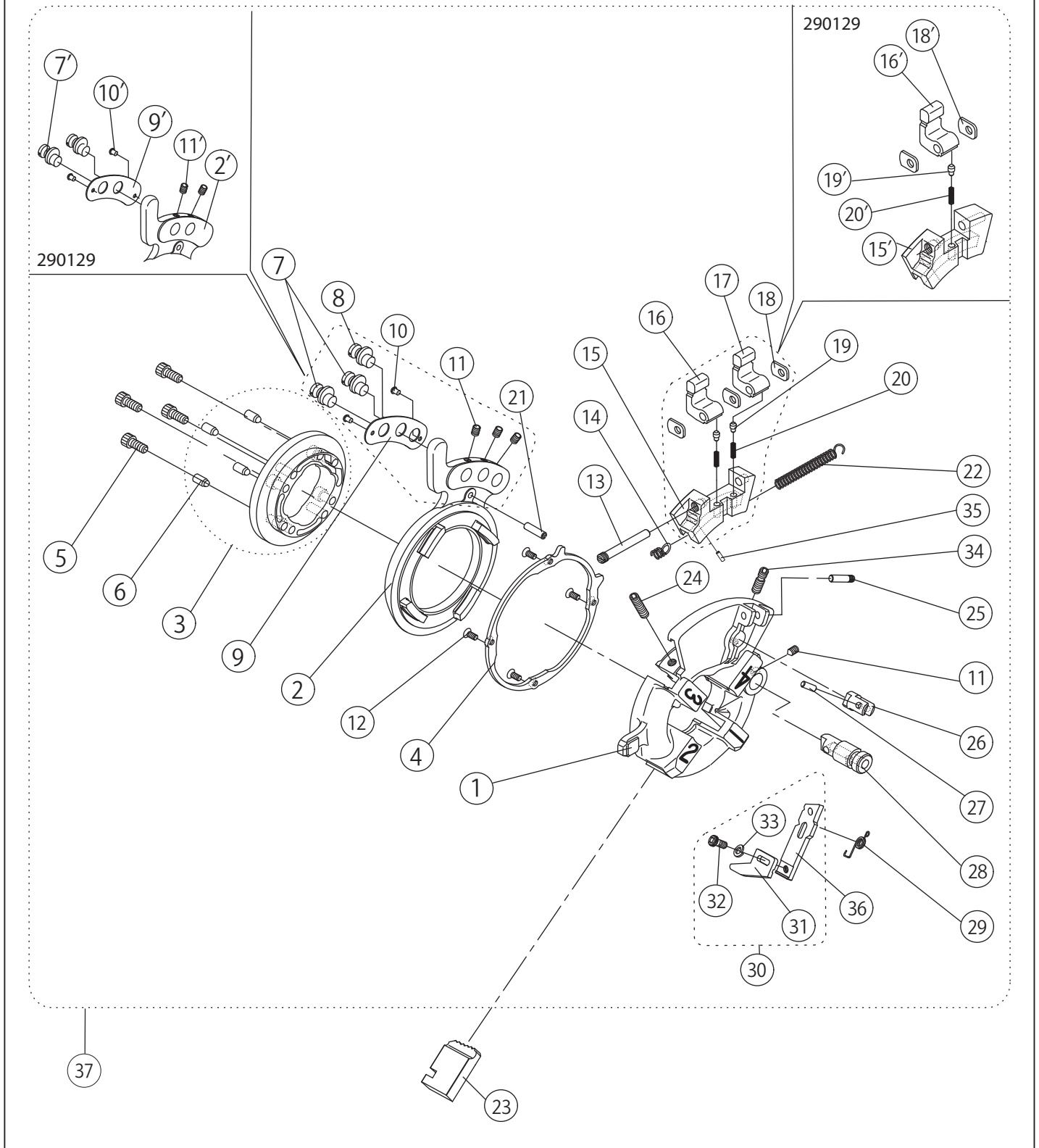


Self Open Die Head 10A / 25A (1/4 - 1")

290129 : 1/4-3/8" BSPT/NPT

290128 : 1/2-1" NPT

290130 : 1/2-1" BSPT



Page	Item	Page title	WH No.	Part No.	Part Name	Spec	Q'ty	Remarks
1	1	Self-open Die-head 10A 25A	606712	MY65	Die-head body		1	
1	2	Self-open Die-head 10A 25A	606713	MY66	Die-head cam plate	for 1/2-1"	1	for 290128, 290130
1	2'	Self-open Die-head 10A 25A	—	MY58	Die-head cam plate	for 1/4-3/8"	1	for 290129
1	3	Self-open Die-head 10A 25A	606714	MY67	Die-head retaining ring		1	incl. G860
1	4	Self-open Die-head 10A 25A	606715	MY71	Die-head ring		1	
1	5	Self-open Die-head 10A 25A	600131	W062	Hex socket head cap screw	M6×16	4	
1	6	Self-open Die-head 10A 25A	609787	G860	Dies notch		4	
1	7	Self-open Die-head 10A 25A	606716	MY73	Eccentric pin A	for 1/2-1"	2	for 290128, 290130
1	7'	Self-open Die-head 10A 25A	—	NY61	Eccentric pin A	for 1/4-3/8"	2	for 290129
1	8	Self-open Die-head 10A 25A	606717	MY80	Eccentric pin B		1	
1	9	Self-open Die-head 10A 25A	606718	MY81	Adjustment plate		1	
1	10	Self-open Die-head 10A 25A	600621	WN34	Rivet	#4×5	2	
1	11	Self-open Die-head 10A 25A	609802	W661	Hex-socket set screw	M6×6	4	for 290128, 290130
1	11'	Self-open Die-head 10A 25A	609802	W661	Hex-socket set screw	M6×6	3	for 290129
1	12	Self-open Die-head 10A 25A	609811	W34A	Oval head cap screw	M4×10	4	
1	13	Self-open Die-head 10A 25A	606721	MY82	Retaining pin		1	
1	14	Self-open Die-head 10A 25A	604698	7698	Spring		1	
1	15	Self-open Die-head 10A 25A	606722	MY69	Opening block	for 1/2-1"	1	for 290128, 290130
1	15'	Self-open Die-head 10A 25A	#N/A	MY59	Opening block	for 1/4-3/8"	1	for 290129
1	16	Self-open Die-head 10A 25A	606723	MY70	Size setting lever A	for 1/2-1"	1	for 290128, 290130
1	16'	Self-open Die-head 10A 25A	#N/A	MY60	Size setting lever	for 1/4-3/8"	1	for 290129
1	17	Self-open Die-head 10A 25A	606724	MY79	Size setting lever B	for 1/2-1"	1	for 290128, 290130 only
1	18	Self-open Die-head 10A 25A	606725	MY75	Size adjust plate		3	for 290128, 290130
1	18'	Self-open Die-head 10A 25A	606725	MY75	Size adjust plate		2	for 290129
1	19	Self-open Die-head 10A 25A	604790	7790	Notch pin		2	for 290128, 290130
1	19'	Self-open Die-head 10A 25A	604790	7790	Notch pin		1	for 290129
1	20	Self-open Die-head 10A 25A	600687	7752	Spring		2	for 290128, 290130
1	20'	Self-open Die-head 10A 25A	600687	7752	Spring		1	for 290129
1	21	Self-open Die-head 10A 25A	606726	WL53	Roll pin	5×16	1	
1	22	Self-open Die-head 10A 25A	602031	MY77	Spring		1	
1	23	Self-open Die-head 10A 25A	—	—	Dies 8A-10A	1/4-3/8"	1 set	for 290129
1	23'	Self-open Die-head 10A 25A	—	—	Dies 15A-20A	1/2-3/4"	1 set	for 290128, 290130
1	23"	Self-open Die-head 10A 25A	—	—	Dies 25A	1"	1 set	for 290128, 290130
1	24	Self-open Die-head 10A 25A	606727	W785	Hex-socket set screw	M8×18	1	
1	25	Self-open Die-head 10A 25A	606728	MY83	Auto-open lever pin		1	
1	26	Self-open Die-head 10A 25A	606730	MY72	Auto-open pin		1	
1	27	Self-open Die-head 10A 25A	606731	MY84	Auto-open straight pin		1	
1	28	Self-open Die-head 10A 25A	606732	MY78	Die-head post		1	
1	29	Self-open Die-head 10A 25A	606733	MY76	Auto-open lever spring		1	
1	30	Self-open Die-head 10A 25A	606734	#0027	Auto-open lever set		1 set	
1	31	Self-open Die-head 10A 25A	#N/A	MY74	Auto-open lever B	BSPT1/2-1"	1	for 290128
1	31'	Self-open Die-head 10A 25A	606735	MY57	Auto-open lever B	NPT1/2-1"	1	for 290130
1	31"	Self-open Die-head 10A 25A	#N/A	MY62	Auto-open lever B	1/4-3/8"	1	for 290129
1	32	Self-open Die-head 10A 25A	600479	W060	Hex socket head cap screw	M6×10	1	
1	33	Self-open Die-head 10A 25A	600132	WG06	Spring washer	6	1	
1	34	Self-open Die-head 10A 25A	606736	MY85	Auto-open spring receptacle		1	
1	35	Self-open Die-head 10A 25A	600175	WL63	Roll pin	φ6×18	1	
1	36	Self-open Die-head 10A 25A	606840	MY68	Auto-open lever A		1	
1	37	Self-open Die-head 10A 25A	—	MMY4DH	Die Head Complete Set	BSPT1/2-1"	1	see Product List 290128
1	37'	Self-open Die-head 10A 25A	—	MMY5DH	Die Head Complete Set	NPT1/2-1"	1	see Product List 290130
1	37"	Self-open Die-head 10A 25A	—	MMY3DH	Die Head Complete Set	1/4-3/8"	1	see Product List 290129