

# REX

PIPE THREADING MACHINE

# S80A Series

## PARTS LIST

As of November 2008



CE



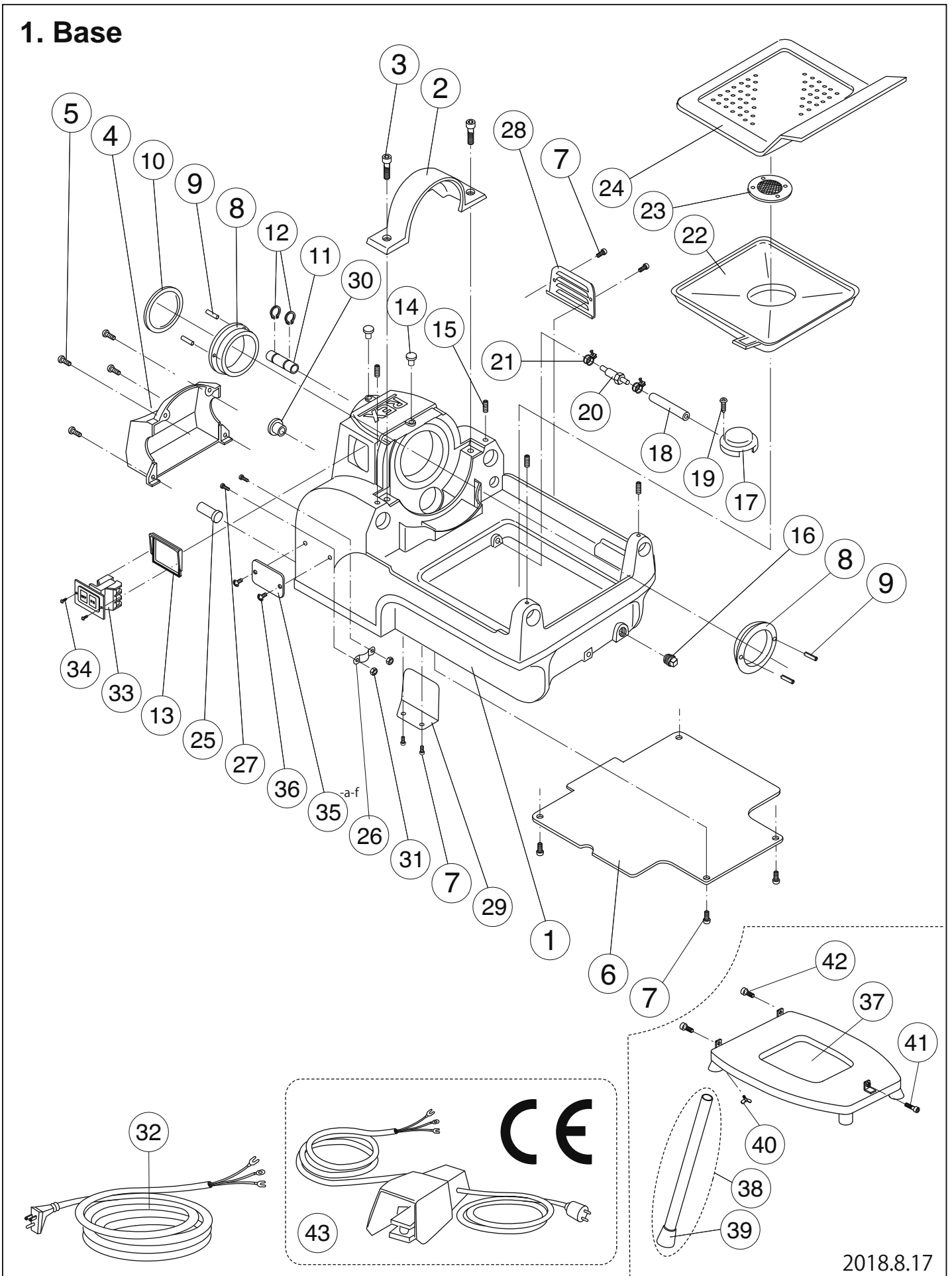
### CONTENTS

1. BASE
2. MAIN SHAFT
3. CARRIAGE, MOTOR
4. MOTOR
5. CUTTER
6. REAMER

# REX

# S80A

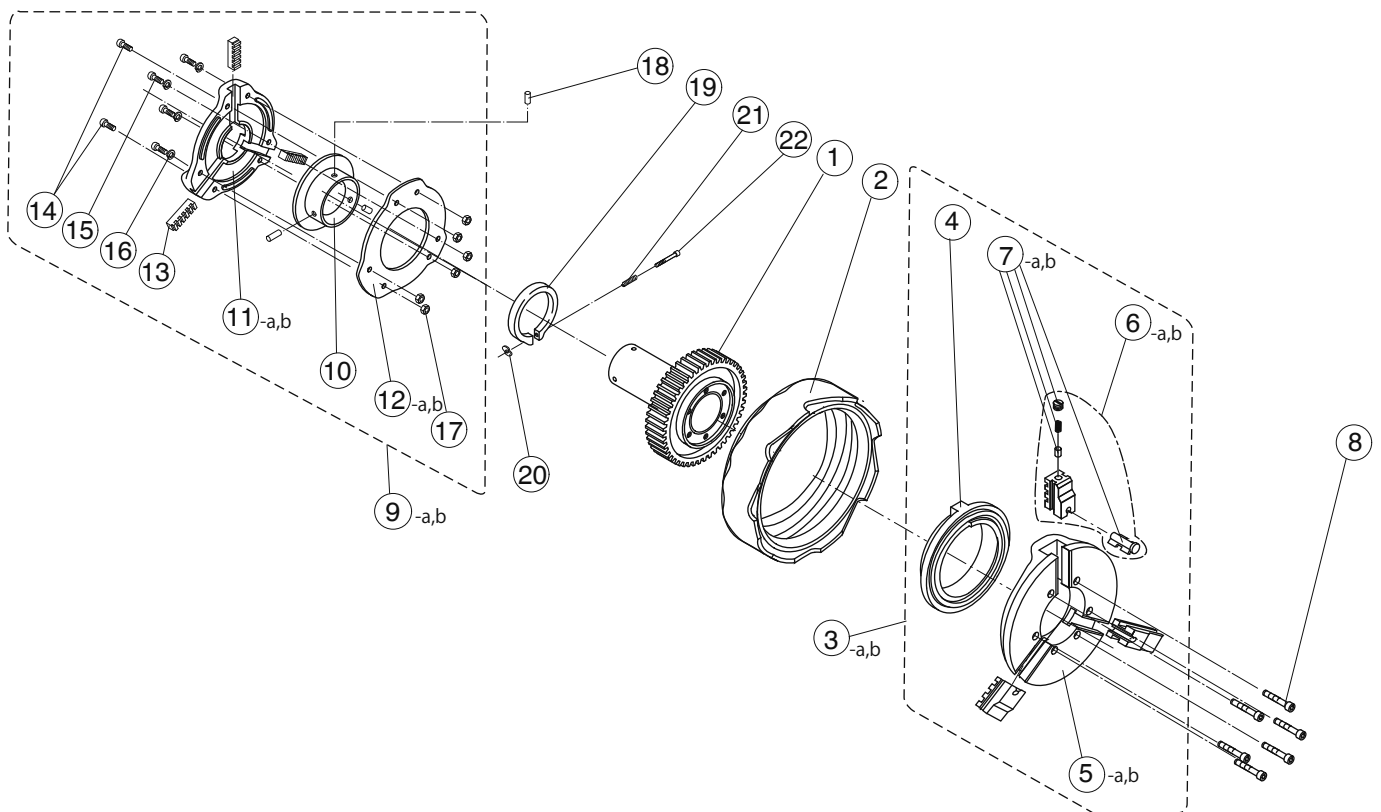
## 1. Base



Page No.	Item No.	Page title	CE	Part No.	Part Name	Spec.	Q'ty	Remarks
1	1	Base		F091	Base casting assembly		1	
1	2	Base		F092	Gear cover for base casting assembly		1	
1	3	Base		W181	Hex-socket head cap screw	M8X20	2	
1	4	Base		F093	Rear cover		1	
1	5	Base		W062	Hex-socket head cap screw	M6X16	4	
1	6	Base		F095	Bottom cover		1	
1	7	Base		W251	Pan head machine screw	M5X8	6	
1	8	Base		4905	Main shaft bearing		2	
1	9	Base		WL41	Roll pin	4X10	4	
1	10	Base		F009	Thrust ring		1	
1	11	Base		F022	Oil tube cover		1	
1	12	Base		WW16	Snap ring	out side 16	1	
1	13	Base		N041	Switch fixed plate		1	
1	14	Base		N039	Oil cap		2	
1	15	Base		W68A	Hex-socket set screw	M8X14 cone point	4	
1	16	Base		WA42	Drain plug	R1	1	
1	17	Base		4047	Strainer		1	
1	18	Base		0410-100	Oil intake line suction tube A/RED	100mm	1	
1	19	Base		WA55	Round head tapping screw	M5X8	1	
1	20	Base		T056	Nipple		1	
1	21	Base		ZJ50	Pipe band S	10mm	2	
1	22	Base		F018	Tank upper cover		1	
1	23	Base		N029	Oil filter		1	
1	24	Base		F016	Scrap receiver		1	
1	25	Base		7021	Cord bushing		1	
1	26	Base		7099	Clamp		1	
1	27	Base		W245	Pan head machine screw	M4X20	2	
1	28	Base		F096	Side cover		1	
1	29	Base		F100	Cover		1	
1	30	Base		F027	Cap		1	
1	31	Base		WC04	Nut	M4	2	
1	32	Base	No	N122	Capyre cord		1	
1	33	Base	No	N008	Switch		1	
1	34	Base		W4A4	Oval head machine screw	M4X12	2	
1	35-a	Base	No	F126	Name plate 60Hz	110V	1	
1	35-b	Base	No	F125	Name plate 50Hz	220V	1	
1	35-c	Base	No	F122	Name plate 60Hz	220V	1	not for sale
1	35-d	Base	No	F123	Name plate 50/60Hz	220V	1	
1	35-e	Base	Yes	F127	Name plate CE 50Hz	110V	1	
1	35-f	Base	Yes	F124	Name plate CE 50Hz	230V	1	not for sale
1	36	Base		WN34	Rivet	#4X5	2	
1	37	Base		F099	Stand base (for S80A)		1	
1	38	Base		N121	Pipe stand		4	
1	39	Base		N125	Leg cap		4	
1	40	Base		WA61	Wing screw	M8X15	4	
1	41	Base		W08G	Hex-socket head cap screw	M8X40	1	
1	42	Base		W080	Hex-socket head cap screw	M8X15	2	
1	43	Base	Yes	FSW1	Foot switch (CE)		1	

# S80A

## 2. Main shaft

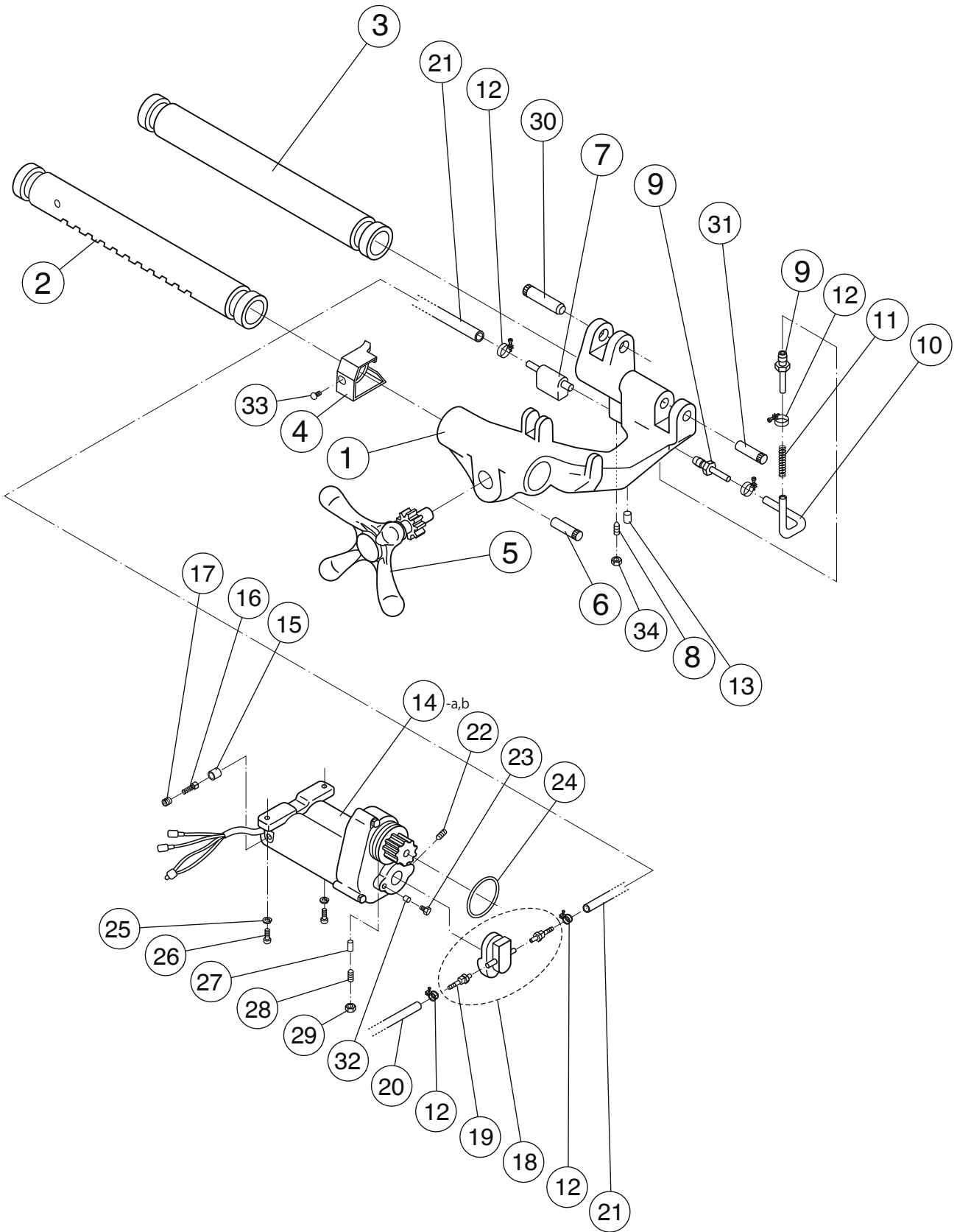


2018.8.17

Page No.	Item No.	Page title	CE	Part No.	Part Name	Spec.	Q'ty	Remarks
2	1	Main shaft		02F1	Main shaft complete set		1 set	F006+F007
2	2	Main shaft		F080	Hand wheel		1	
2	3-a	Main shaft	No	4981	Chuck complete set RT		1 set	
2	3-b	Main shaft	Yes	4980	Chuck complete set S (CE)		1 set	
2	4	Main shaft		FS00	Chuck scroll		1	
2	5-a	Main shaft	Yes	FH00	Chuck body KS		1	
2	5-b	Main shaft	No	FH01	Chuck body RT		1	
2	6-a	Main shaft	Yes	4JCJS	Chuck jaw set S (CE)		1 set	3pcs/set
2	6-b	Main shaft	No	4FCJS	Chuck jaw set RT		1 set	3pcs/set
2	7-a	Main shaft	Yes	70KS	Chuck jaw insert set S (CE)		1 set	3pcs/set
2	7-b	Main shaft	No	70RT	Chuck jaw insert set RT		1 set	3pcs/set
2	8	Main shaft		W07A	Hex-socket head cap screw (with knurling)	M7X54	6	
2	9-a	Main shaft	No	F020	Rear chuck complete set		1 set	
2	9-b	Main shaft	Yes	F084	Rear chuck complete set (CE)		1 set	
2	10	Main shaft		F0S3	Rear scroll		1	
2	11-a	Main shaft	No	F0S1	Rear chuck receptacle		1	
2	11-b	Main shaft	Yes	4FC1	Rear chuck receptacle (CE)		1	
2	12-a	Main shaft	No	F0S2	Rear chuck cover		1	
2	12-b	Main shaft	Yes	4FC2	Rear chuck cover (CE)		1	
2	13	Main shaft		F0SS	Rear chuck jaw		1 set	3pcs/set
2	14	Main shaft			Reamer screw	M5X15	2	
2	15	Main shaft			Pan head machine screw	M5X15	4	
2	16	Main shaft		WG05	Spring washer	5	4	
2	17	Main shaft		WC05	Nut	M5	6	
2	18	Main shaft		WM64	Grooved Pin	6X14	3	Old No. WL60(6x12)
2	19	Main shaft		F008	Self-adjusting thrust ring		1	
2	20	Main shaft		WE16	U-nut	M6	1	
2	21	Main shaft		F030	Spring		1	
2	22	Main shaft		W069	Hex-socket head cap screw	M6X55	1	

# S80A

## 3. Carriage, Motor

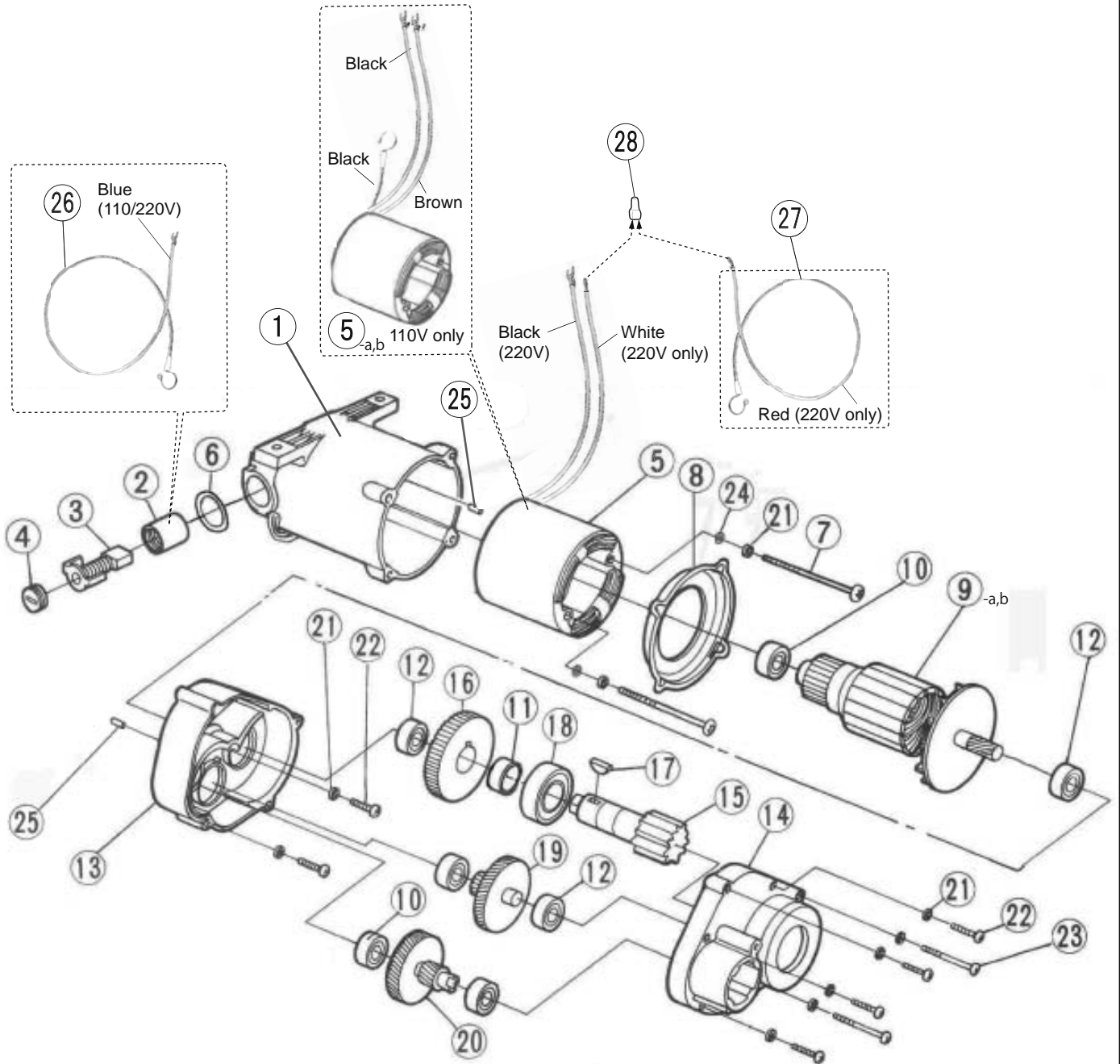


2018.8.17

Page No.	Item No.	Page title	CE	Part No.	Part Name	Spec.	Q'ty	Remarks
3	1	Carriage, Motor		F004	Carriage		1	
3	2	Carriage, Motor		F097	Carriage support bar A		1	
3	3	Carriage, Motor		F098	Carriage support bar B		1	
3	4	Carriage, Motor		F094	Carriage support collar		1	
3	5	Carriage, Motor		F013	Carriage handle		1	
3	6	Carriage, Motor		WM53	Grooved Pin	5X35	1	
3	7	Carriage, Motor		G044	Oil tube connector		1	
3	8	Carriage, Motor		W665	Hex-socket set screw	M6X10 cone point	1	
3	9	Carriage, Motor		F032	Nipple		2	
3	10	Carriage, Motor		0410-120	Tube (Red)	120mm	1	
3	11	Carriage, Motor		F033	Spring	ø110	1	
3	12	Carriage, Motor		ZJ50	Pipe band S	10mm	1	
3	13	Carriage, Motor		G861	Oil notch		1	
3	14-a	Carriage, Motor		F062T	Motor (Series motor)	220V	1	
3	14-b	Carriage, Motor		F061T	Motor (Series motor)	100V-110V	1	
3	15	Carriage, Motor		FM16	Carbon brush holder		1 set	2pcs/set
3	16	Carriage, Motor		FM10	Carbon brush (auto-stop)		1 set	2pcs/set
3	17	Carriage, Motor		FM17	Carbon brush cap		1 set	2pcs/set
3	18	Carriage, Motor		F80P	Gear pump		1	Old No.F021
3	19	Carriage, Motor		1035	Joint		2	
3	20	Carriage, Motor		0410-550	Oil tube B (Red)	550mm	1	
3	21	Carriage, Motor		0410-700	Oil tube (Red)	700mm	1	
3	22	Carriage, Motor		W68A	Hex-socket set screw	M8X14 cone point	1	
3	23	Carriage, Motor		W051	Hex-socket head cap screw	M5X16	1	
3	24	Carriage, Motor		Z5S6	O-ring	S-63	1	
3	25	Carriage, Motor		WG08	Spring washer	8	2	
3	26	Carriage, Motor		W083	Hex-socket head cap screw		2	
3	27	Carriage, Motor		1013	Motor fixed pin		1	
3	28	Carriage, Motor		W787	Hex-socket set screw	M8X22 cup point	1	
3	29	Carriage, Motor		WD08	Hexagon nut	M8	1	
3	30	Carriage, Motor		1076	Cutter arm stop pin		1	
3	31	Carriage, Motor		1096	Reamer arm stop pin		1	
3	32	Carriage, Motor		F072	Stop collar		1	
3	33	Carriage, Motor		W556	Truss head machine screw	M5X10	1	
3	34	Carriage, Motor		WD06	Hexagon nut	M6	1	

# S80A

## 4. Motor (110V/220V)

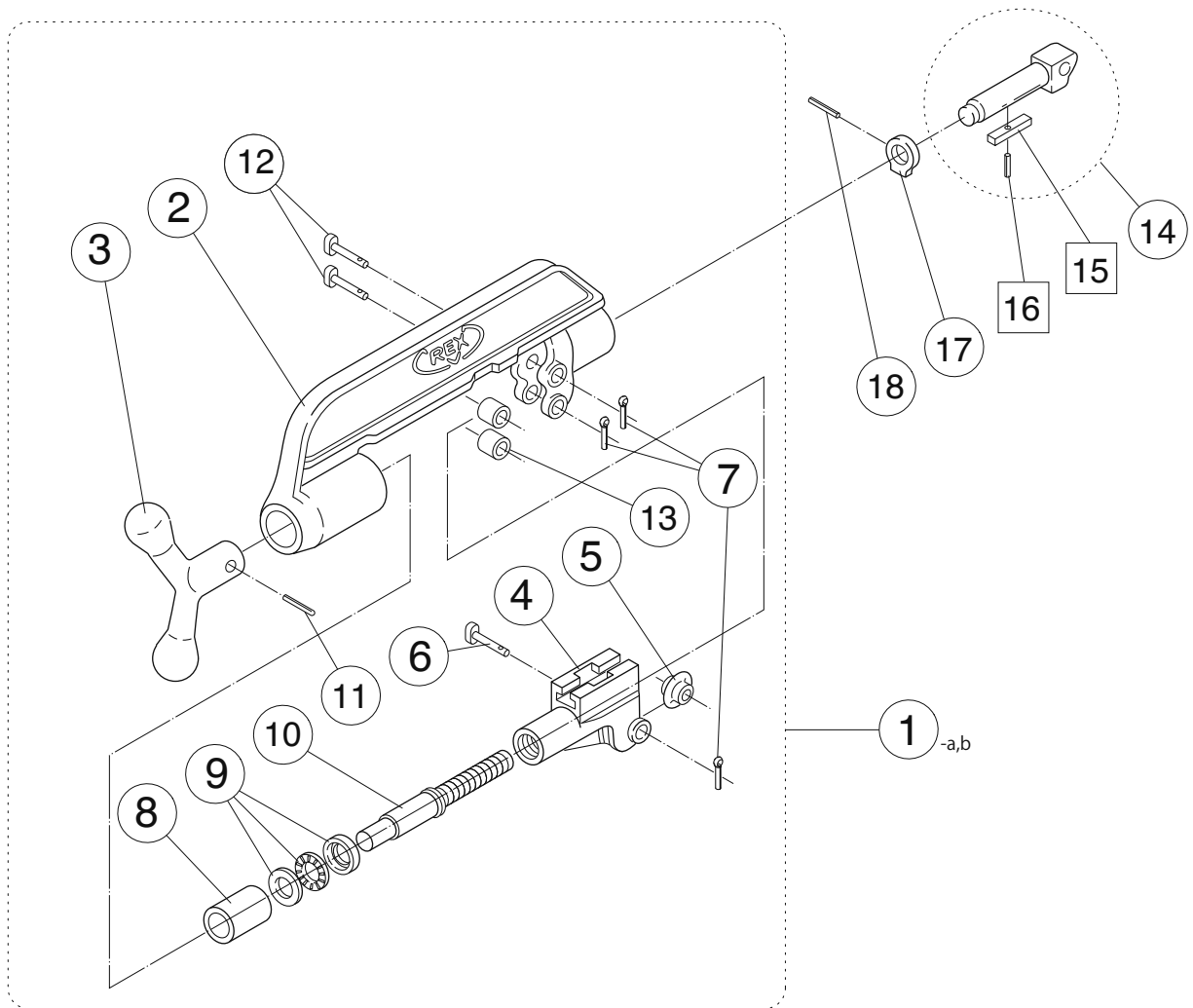


2018.8.17

Page No.	Item No.	Page title	CE	Part No.	Part Name	Spec.	Q'ty	Remarks
4	1	Motor		FM25T	Housing		1	
4	2	Motor		FM16	Carbon brush holder		2	
4	3	Motor		FM10	Carbon brush (auto-stop)		1 set	2pcs/set
4	4	Motor		FM17	Carbon brush cap		2	
4	5-a	Motor		FM05T	Stator assembly for F061T(F), F068T(R)	100-110V	1	
4	5-b	Motor		FM08T	Stator assembly for F062T(F), F067T(R)	220-230V	1	
4	6	Motor		FM41	Fiber washer		2	
4	7	Motor			Pan head machine screw	M5x75	2	
4	8	Motor		FM42T	Fan guide with fiber sheet		1	
4	9-a	Motor		FM01T	Armature assembly for F061T(F)	100-110V	1	(F):Forward Rotation
4	9-b	Motor		FM04T	Armature assembly for F062T(F)	220-230V	1	(F):Forward Rotation
4	10	Motor		S701	Bearing	#6200ZZ	2	
4	11	Motor		FM43	Spacer		1	
4	12	Motor		I202	Bearing	#6201ZZ	5	
4	13	Motor		FM28	Inner cover		1	
4	14	Motor		FM26	Gear cover		1	
4	15	Motor		FM24	Spindle		1	
4	16	Motor		NM23	Final gear		1	
4	17	Motor		FM46	Woodruff key		1	
4	18	Motor		7M30	Bearing	#6304ZZ	1	
4	19	Motor		FM22	Third pinion gear assembly		1	
4	20	Motor		FM20	Second pinion gear assembly		1	
4	21	Motor		WG05	Spring washer	5mm	10	
4	22	Motor		W255	Round head machine screw	M5x25	6	
4	23	Motor		W25B	Round head machine screw	M5x65	2	
4	24	Motor			Toothed lock washer	5	2	
4	25	Motor		FM47	Bearing lock		2	
4	26	Motor		FM14T	Internal wire - Blue		1	
4	27	Motor			Internal wire - Red		1	for F062T(F;220V) only
4	28	Motor			Insulation cap		1	for F062T(F;220V) only

# S80A

## 5. Cutter

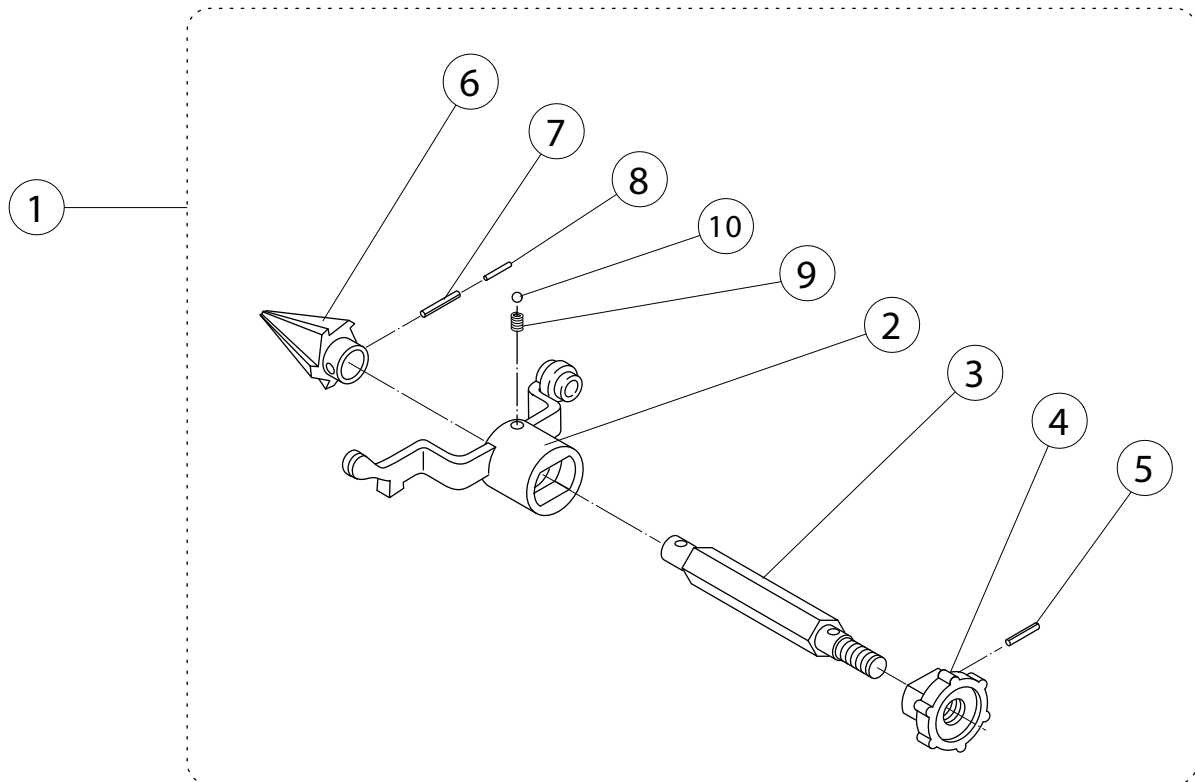


2018.8.17

Page No.	Item No.	Page title	CE	Part No.	Part Name	Spec.	Q'ty	Remarks
5	1-a	Cutter		0FCU1S	Complete cutter		1 set	14-18 as a set
5	1-b	Cutter		0FCU3S	Complete cutter for PLP		1 set	14-18 as a set for PLP
5	2	Cutter		8071	Cutter frame		1	
5	3	Cutter		F012	Cutter handle		1	
5	4	Cutter		F024	Cutter guide		1	
5	5	Cutter		135076	Cutter wheel		1	
5	6	Cutter		2471	Cutter pin S		1	
5	7	Cutter		WN12	Spring cotter	#2.3X15	3	
5	8	Cutter		3463	Cutter bush		1	
5	9	Cutter		1302	Thrust bearing assembly	#51102	1	
5	10	Cutter		F025	Feed screw		1	
5	11	Cutter		WL65	Roll pin	6X28	1	
5	12	Cutter		5079	Cutter pin L		2	
5	13	Cutter		5074	Cutter roller		2	
5	14	Cutter		8074	Cutter arm		1	14-16 as a set
5	17	Cutter		8075	Stop ring		1	
5	18	Cutter		WL37	Roll pin	3X25	1	

# S80A

## 6. Reamer



Page No.	Item No.	Page title	CE	Part No.	Part Name	Spec.	Q'ty	Remarks
6	1	Reamer		0FRM3S	Reamer complete set		1set	
6	2	Reamer		F119	Reamer arm		1	
6	3	Reamer		1092	Reamer shaft		1	
6	4	Reamer		1094	Reamer knob		1	
6	5	Reamer		WL41	Roll pin	4X10	1	
6	6	Reamer		8093	Reamer cone		1	
6	7	Reamer		WL86	Roll pin	8X35	1	
6	8	Reamer		WLA1	Roll pin	4.75X35	1	
6	9	Reamer		5096	Spring		1	
6	10	Reamer		WQ08	Steel ball	8	1	



## **REX INDUSTRIES CO., LTD.**

**Overseas Sales Dept. (Head Office & Factory):**

**1-9-3, Hishiyahigashi, Higashi Osaka 578-0948, Japan**

**Tel.: +81 - (0)72 - 961 - 9820 Fax.: +81 - (0)72 - 961 - 9878**

**URL** <http://www.rexind.co.jp>