

# REX

PIPE THREADING MACHINE

## N80A Series

# PARTS LIST

As of November 2008



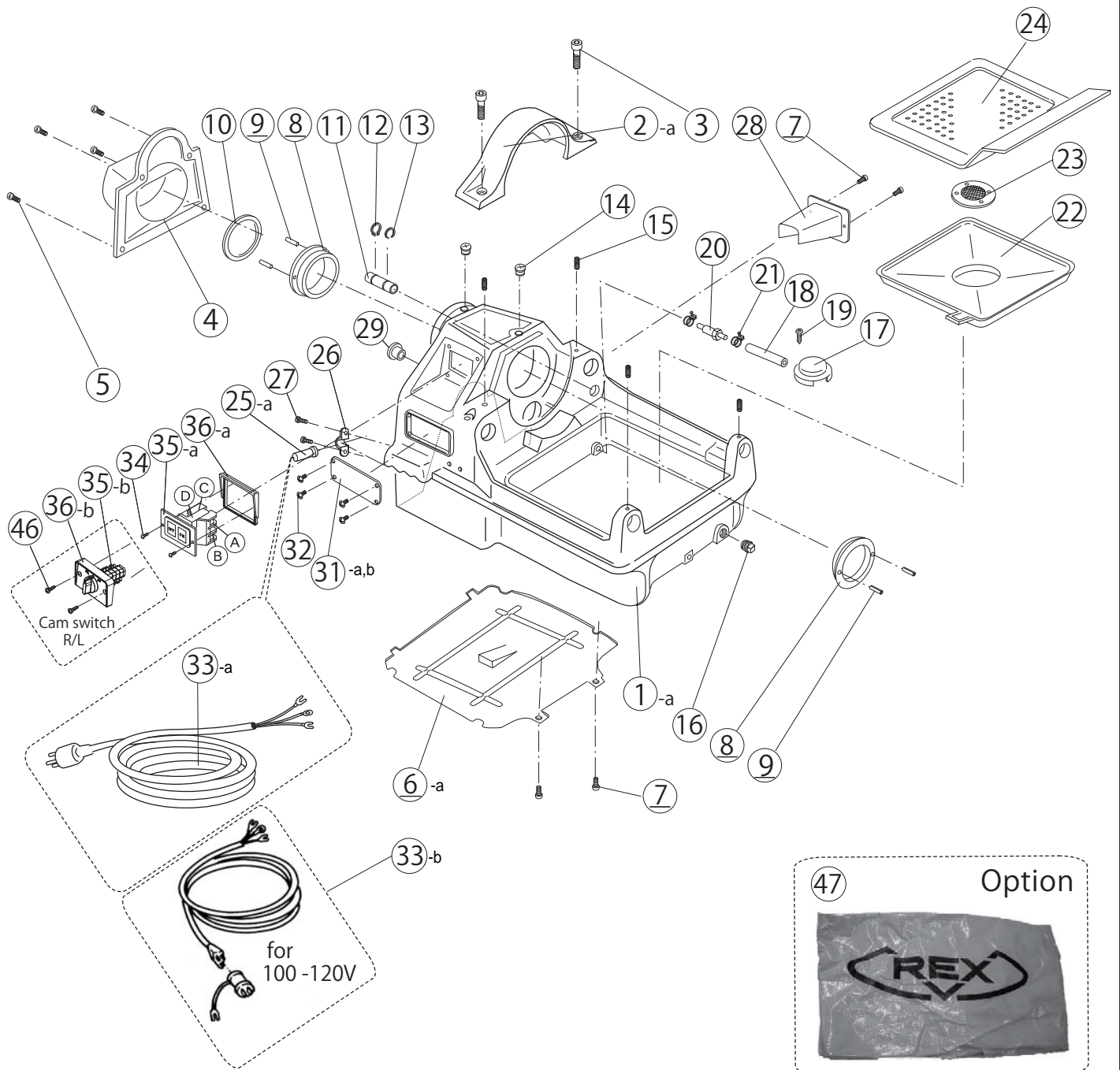
### CONTENTS

1. BASE (Standard)  
(CE)
2. MOTOR, PUMP
3. MAIN SHAFT
4. CARRIAGE, MOTOR
5. CUTTER
6. REAMER

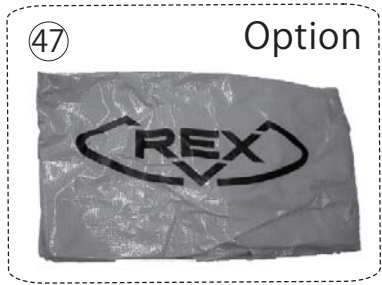
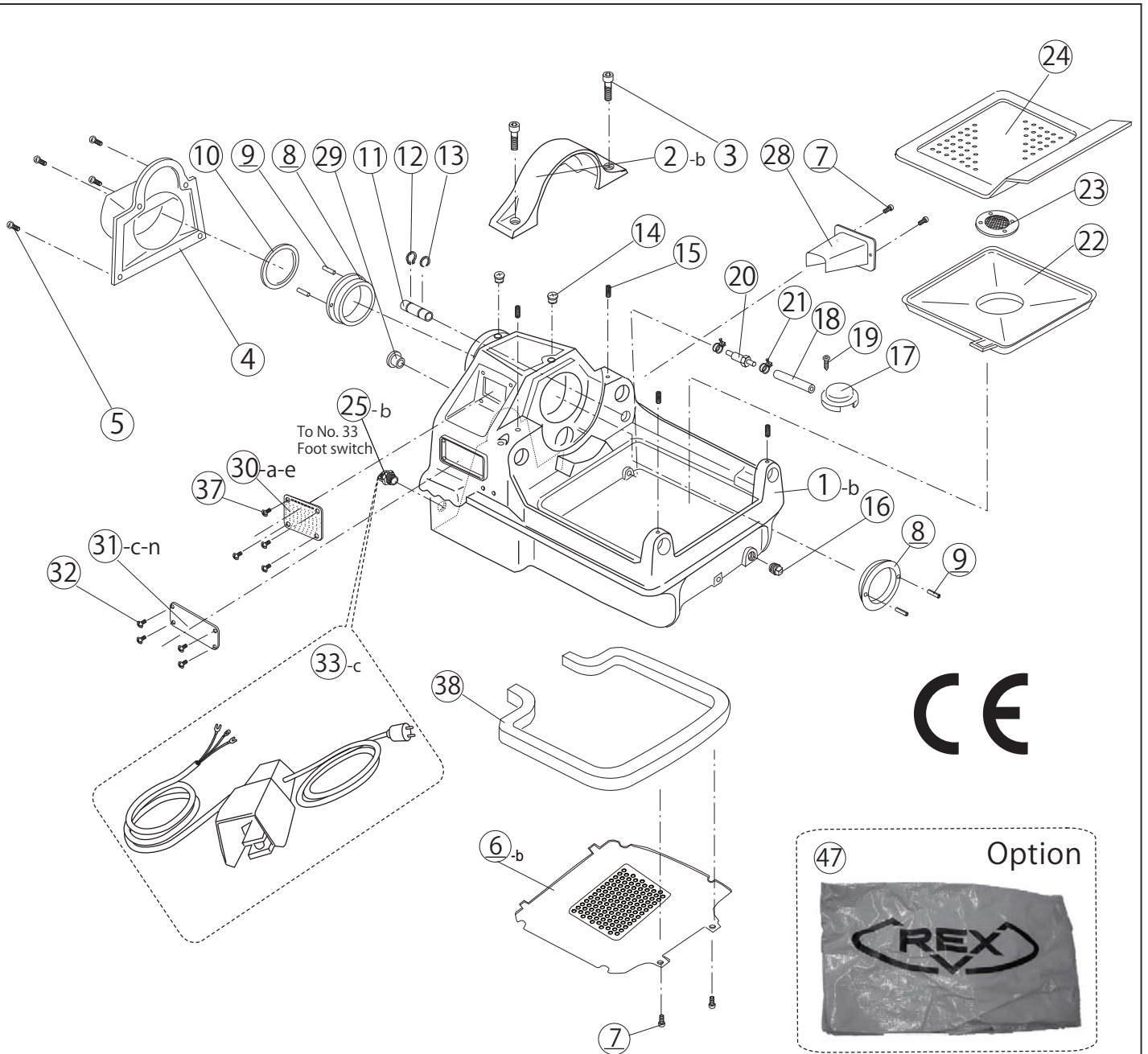
# REX

\*Some dedicated maintenance parts for products past 7 years after manufacture are discontinued as stocks run out.

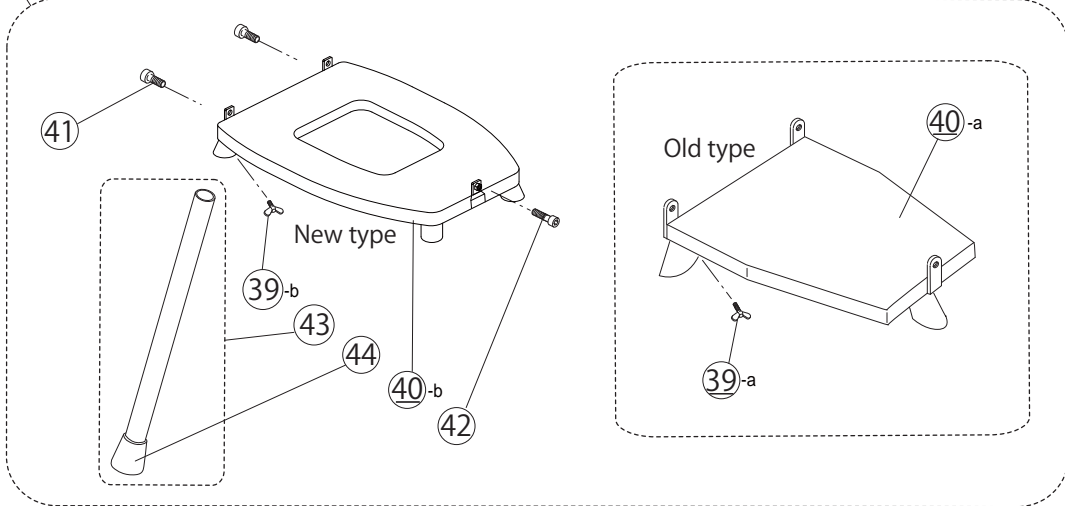
# N80A Series - 1. Base (Standard)



# N80A Series - 1. Base (CE)



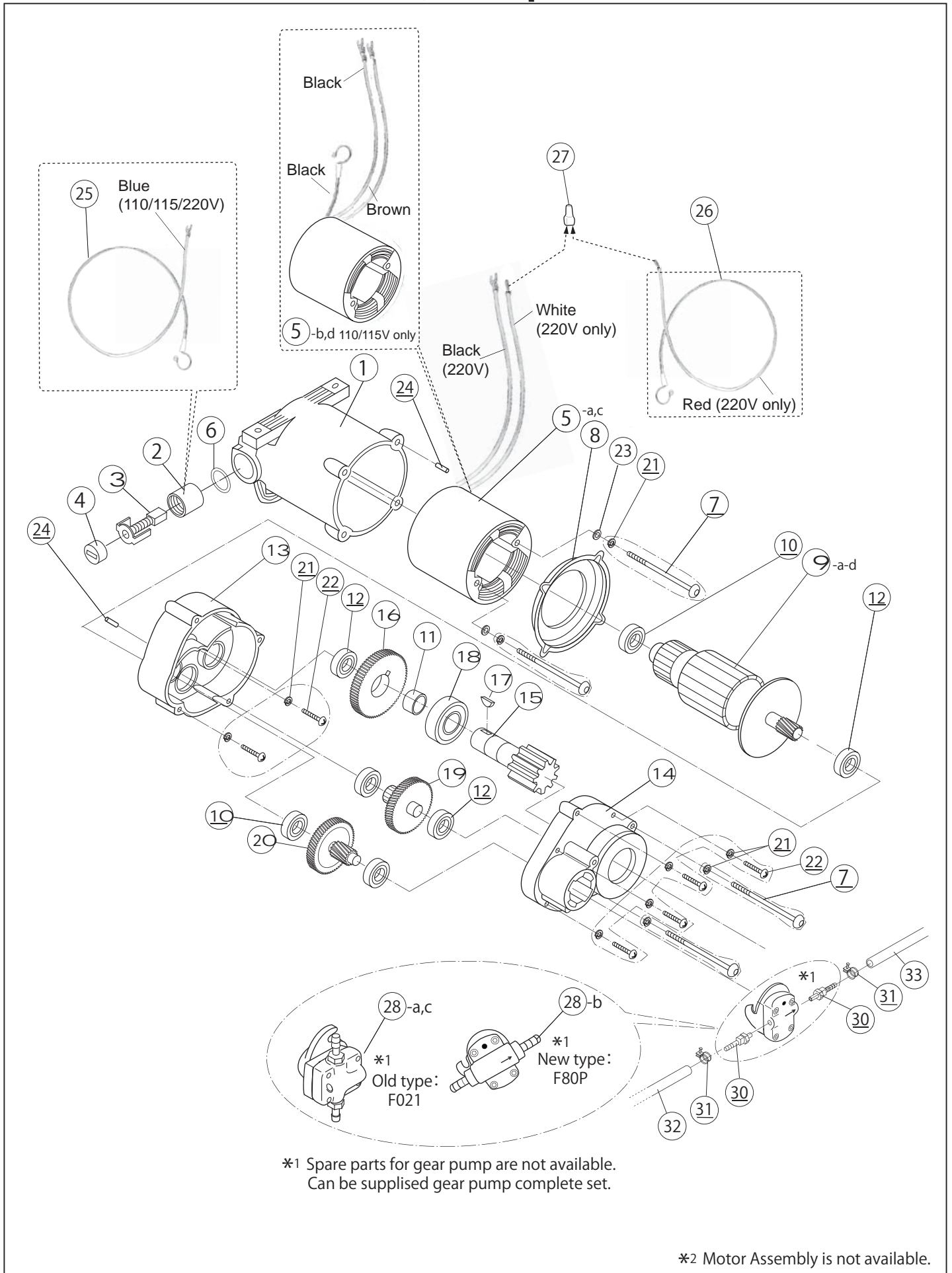
45 02FY : Pipe Stand Complete Set \*discontinued



2018.8.24

NO.	Page Title	CE	Parts No.	Parts Name	Spec.	Q'ty
1-a	1.Base *Include CE		F001	Base Casting Assembly JPN	*discontinued	1
1-b	1.Base *Include CE	Yes	F090	Base Casting Assembly	CE	1
2-a	1.Base *Include CE	X	FM26	Gear Cover		1
2-b	1.Base *Include CE	Yes	F002	Gear Cover	*discontinued	1
3	1.Base *Include CE		W082	Hex Socket Head Cap Screw	(M8 x 20)	2
4	1.Base *Include CE		F003	Rear Cover	*discontinued	1
5	1.Base *Include CE		W06A	Hex Socket Head Cap Screw	(M6 x 14)	4
6-a	1.Base *Include CE	X	F017	Bottom Cover		1
6-b	1.Base *Include CE	Yes	F086	Bottom Cover CE		1
7	1.Base *Include CE		W251	Round Head Machine Screw	(M5 x 8)	4
8	1.Base *Include CE		4905	Main Shaft Bearing	19Z339	2
9	1.Base *Include CE		WL41	Roll Pin	(4 x 10)	4
10	1.Base *Include CE		F009	Thrust Ring		1
11	1.Base *Include CE		F022	Oil Tube Cover		1
12	1.Base *Include CE		WW16	Snap Ring	(Out Side 16)	1
13	1.Base *Include CE		WX16	Retaining Ring	(16)	1
14	1.Base *Include CE		N039	Oil Cap	Gray	2
15	1.Base *Include CE		W684	Hex Socket Set Screw	(cone M8 x 14)	4
16	1.Base *Include CE		WA42	Drain Plug (R1)		1
17	1.Base *Include CE		4047	Strainer		1
18	1.Base *Include CE		0410-100	Oil line tube Red (Intake)	(100 mm)	1
19	1.Base *Include CE		-	Round Head Tapping Screw	(M5 x 10)	1
20	1.Base *Include CE		T056	Nipple		1
21	1.Base *Include CE		ZJ50	Pipe Band S	(10 mm)	2
22	1.Base *Include CE		F018	Tank Upper Cover		1
23	1.Base *Include CE		N029	Oil Filter		1
24	1.Base *Include CE		F016	Scrap Receiver		1
25-a	1.Base *Include CE	X	7021	Cord Bush		1
25-b	1.Base *Include CE	Yes	FSW2	Cord bush	CE	1
26	1.Base *Include CE	X	7098	Binder	C-15	1
27	1.Base *Include CE	X	W242	Round Head Machine Screw	(M4 x 10)	2
28	1.Base *Include CE		F015	Side Cover	Gray	1
29	1.Base *Include CE		-	Clamp (NK - 6 N)		1
29	1.Base *Include CE		F027	Cap	Black	1
30-a	1.Base *Include CE	Yes	F130	Warning plate (N80A/V)	*discontinued CE/110V/230V BSPT 50Hz (N0.274620/622/636/640/653/660)	1
30-b	1.Base *Include CE	Yes	F131	Warning plate (N80AV)	*discontinued CE/230V BSPT 50Hz (N0.274644)	1
30-c	1.Base *Include CE	Yes	F132	Warning plate (N80A,N80AVⅢ)	*discontinued CE/230V BSPT 50Hz (N0.274530/613/634/656)	1
30-d	1.Base *Include CE	Yes	F133	Warning plate (N80A/V)	*discontinued CE/230V BSPT 50Hz (N0.274617/642)	1
30-e	1.Base *Include CE	Yes	F134	Warning plate (N80AV)	*discontinued CE/230V BSPT 50Hz (N0.274540)	1
31-a	1.Base *Include CE	X	F035	Name Plate (N80A/V/Ⅲ/VM-TC/V/Ⅲ)	*discontinued 220V/700W BSPT 50Hz (N0.274507/510/520/531/541/611/612/614/621/624/ 626/ 628/630/631/633/648/650/651/652/654/658)	1
31-b	1.Base *Include CE	X	L002	Name Plate (N80A)	*discontinued 100V/600W BSPT 60Hz (N0.274001/002/610/635)	1
31-c	1.Base *Include CE	Yes	F110	Name Plate for CE (N80A/V)	*discontinued 230V BSPT 50Hz (N0.274636/274653)	1
31-d	1.Base *Include CE	Yes	F111	Name Plate for CE (N80A)	*discontinued 230V BSPT 50Hz (N0.274613/274634)	1
31-e	1.Base *Include CE	Yes	F112	Name Plate for CE (N80A)	*discontinued 230V BSPT 50Hz (N0.274617)	1
31-f	1.Base *Include CE	Yes	F114	Name Plate for CE (N80AV)	*discontinued 230V BSPT 50Hz (N0.274530)	1
31-g	1.Base *Include CE	Yes	F141	Name Plate for CE (N80AV)	*discontinued 230V BSPT 50Hz (N0.274644)	1
31-h	1.Base *Include CE	Yes	F151	Name Plate for CE (N80AV)	*discontinued 230V BSPT 50Hz (N0.274540)	1
31-i	1.Base *Include CE	Yes	F152	Name Plate for CE (N80AV)	*discontinued 230V BSPT 50Hz (N0.274642)	1
31-j	1.Base *Include CE	Yes	L036	Name Plate for CE (N80AVⅢ)	*discontinued 230V BSPT 50Hz (N0.274656)	1
31-k	1.Base *Include CE	Yes	F115	Name Plate for CE (N80A)	*discontinued 110V BSPT 50Hz (N0.274620)	1
31-l	1.Base *Include CE	Yes	LR10	Name Plate for CE (N80A)	*discontinued 110V BSPT 50Hz (N0.274622)	1
31-m	1.Base *Include CE	Yes	LR12	Name Plate for CE (N80AV)	*discontinued 110V BSPT 50Hz (N0.274640)	1
31-n	1.Base *Include CE	Yes	L053	Name Plate for CE (N80AV)	*discontinued 110V BSPT 50Hz (N0.274660)	1
32	1.Base *Include CE		W241	Round Head Tapping Screw	(M4 x 8)	4
33-a	1.Base *Include CE	X	N122	Cabtyre Cord EX		1
33-b	1.Base *Include CE	X	4082	Cabtyre Cord with adapter (4081)	*discontinued JPN/100-120V	1
33-c	1.Base *Include CE	Yes	FSW1	Foot switch	230V /115V CE	1
34	1.Base *Include CE	X	W4A4	Oval Head Machine Screw	(M4 x 12)	2
35-a	1.Base *Include CE	X	N008	Switch ( Normal )		1
35-b	1.Base *Include CE	X	F065	Cam switch R/L		1
36-a	1.Base *Include CE	X	N041	Switch fixed plate		1
36-b	1.Base *Include CE	X	F066	Cam switch fixed plate R/L		1
37	1.Base *Include CE	X	WN34	Rivet	(#4 x 5)	2
38	1.Base *Include CE	Yes	F085	Bottom cover sponge		1
39-a	1.Base *Include CE	Yes	WA61	Wing Screw	(M8 x 20) / Old type	3
39-b	1.Base *Include CE	Yes	WA82	Wing Screw	(M8 x 15) / New type	4
40-a	1.Base *Include CE	Yes	-	Stand Base	*discontinued CE / Old type	1
40-b	1.Base *Include CE	Yes	F099	Stand Base S80A	*discontinued CE / New type *Old No.:F060	1
41	1.Base *Include CE		W08G	Hex Socket Head Cap Screw	(M8 x 40) *Old No.:W085	1
42	1.Base *Include CE		W08H	Hex Socket Head Cap Screw	(M8 x 70) *Old No.:W082	2
43	1.Base *Include CE		N121	Pipe Stand with N125:Leg Cap	800mm(Old type: No.F059/650mm) / price per pce	4
44	1.Base *Include CE		N125	Leg Cap		4
45	1.Base *Include CE		02FY	Pipe Stand Complete Set (No.39-44)	*discontinued 17029E	1 Set
46	1.Base *Include CE		W4A6	Oval Head Machine Screw	(M4 x 6)	2
47	1.Base *Include CE		7552	Machine cover	OPTION	1

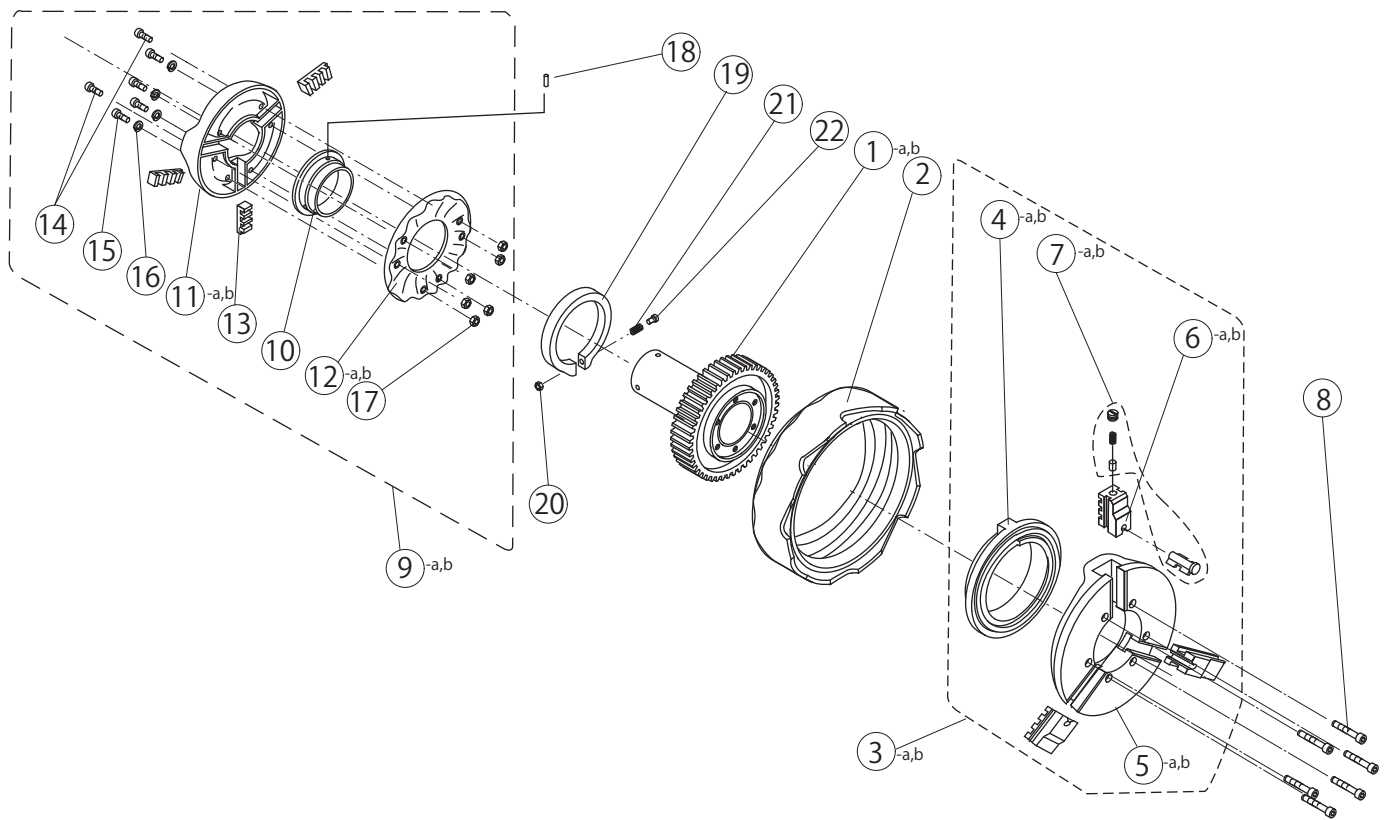
# N80A Series - 2. Motor, Pump



NO.	Page Title	CE	Parts No.	Parts Name	Spec.	Q'ty
1	2.Motor, Pump		FM25	Housing		1
2	2.Motor, Pump		FM16	Carbon Brush Holder	**Discontinued	2
3	2.Motor, Pump		FM10	Carbon Brush (Auto Stop)(x096,100v/220v)	2pcs/set	1 Set
4	2.Motor, Pump		FM17	Carbon Brush Cap	/PCS	2
5-a	2.Motor, Pump		FM08	Stator Assembly 220V	**Discontinued	1
5-b	2.Motor, Pump		FM05	Stator Assembly 110V	**Discontinued	1
5-c	2.Motor, Pump		FM07	Stator Assembly 200V		1
5-d	2.Motor, Pump		FM06	Stator Assembly 115V	**Discontinued	1
6	2.Motor, Pump		FM15	Stop plate	/SET **Discontinued	2
7***	2.Motor, Pump		-	Round head machine screw (M5x25) with spring washer	W25B + WG06 /per set	4
8	2.Motor, Pump		FM27	Fan Guide	**Discontinued	1
9-a	2.Motor, Pump		FM04	Armature Assemble 220V	**Discontinued	1
9-b	2.Motor, Pump		FM01	Armature Assemble 110V	**Discontinued	1
9-c	2.Motor, Pump		FM03	Armature Assemble 200V	**Discontinued	1
9-d	2.Motor, Pump		FM02	Armature Assemble 115V	**Discontinued	1
10	2.Motor, Pump		S701	Bearing (#6200ZZ)		2
11	2.Motor, Pump		NM43	Distance Piece		1
12	2.Motor, Pump		I202	Bearing (#6201ZZ)		5
13	2.Motor, Pump		FM28	Inner Cover	**Discontinued	1
14	2.Motor, Pump		FM26	Gear Cover		1
15	2.Motor, Pump		FM24	Spindle		1
16	2.Motor, Pump		NM23	Final Gear		1
17	2.Motor, Pump		FM46	Woodruff key	(4 x 160 x 6.5)	1
18	2.Motor, Pump		7M30	Bearing (#6304ZZ)		1
19	2.Motor, Pump		FM22	Third Pinyon Gear		1
20	2.Motor, Pump		FM20	Second Pinyon Gear		1
21	2.Motor, Pump		WG06	Spring Washer	(6mm)	10
22***	2.Motor, Pump		-	Round head machine screw (M5x25) with spring washer	W255 + WG06 /per set	6
23	2.Motor, Pump		WI09	Washer B	(5mm)	2
24	2.Motor, Pump		FM47	Bearing Lock	**Discontinued	2
25	2.Motor, Pump		FM14	Internal Wire Assembly (Blue)	(Blue : with white wire to Stator)/SET	1 Set
26	2.Motor, Pump			Internal Wire Assembly (Red)	Red: To Switch	
27	2.Motor, Pump		-	Insulation cap (for Blue & white internal wire)		1
28-a	2.Motor, Pump		F021**	Gear pump complete set * with joint (1035 / No.30)	**Discontinued : Old type	1 Set
28-b	3.Motor, Pump		F80P*	Gear pump complete set * with joint (1035 / No.30)	*Can be supplied F80P Complete set.Old No.:F021	1 Set
28-c	3.Motor, Pump		F063	Gear pump complete set R/L* with joint (1035 / No.30)	**Discontinued	1 Set
29	2.Motor, Pump		W042	Hex Socket Head Cap Screw	(M4x10)	4
30*	2.Motor, Pump		1035*	Joint		2
31	2.Motor, Pump		ZJ50	Pipe band	10mm	2
32	2.Motor, Pump		0410-550	Oil line tube Red (Intake)	550mm/Red Old no:ZD12	1
33	2.Motor, Pump		0410-700	Oil line tube Red (Feed)	700mm/Red Old no:ZD11	1

\*Spare parts for gear pump are not available. Gear pump complete set can be supplied. \*\*\*To be ordered as a set.

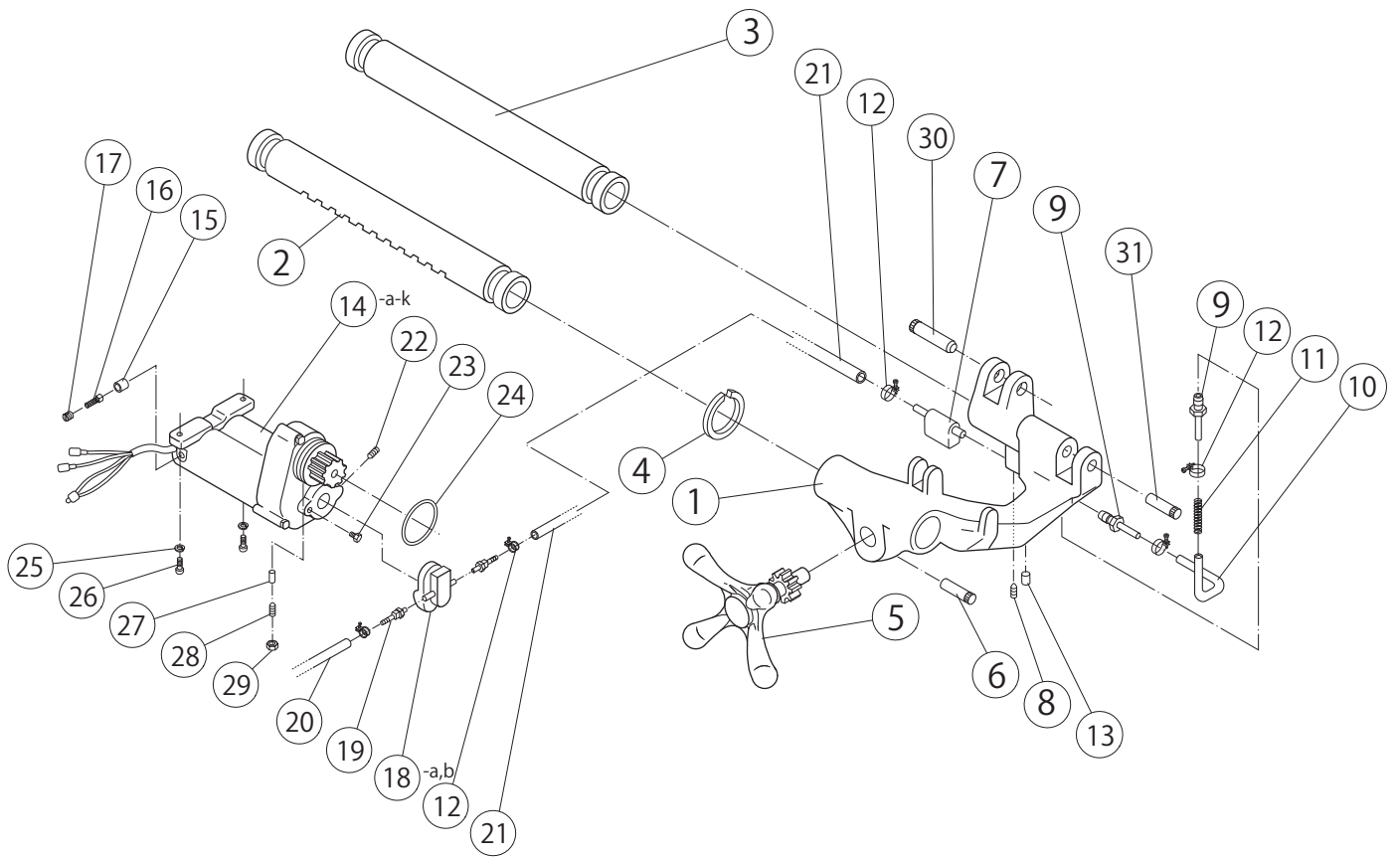
# N80A Series - 3. Main shaft



2018.8.24

NO.	Page Title	CE	Parts No.	Parts Name	Spec.	Q'ty
1-a	3.Main Shaft		02F1	Main Shaft Complete Set	Set F006 Main Shaft Gear, F007 Main Shaft	1 Set
1-b	3.Main Shaft	Yes	-	Main Shaft Complete Set CE		1 Set
2	3.Main Shaft		F080	Hand Wheel		1
3-a	3.Main Shaft		4981	Chuck Complete Set (No.4-7) (RT-RT)		1 Set
3-b	3.Main Shaft	Yes	4980	Chuck Complete Set (No.4-7) (S)		1 Set
4-a	3.Main Shaft		FS00	Chuck Scroll		1
4-b	3.Main Shaft	Yes	-	Chuck Scroll CE		1
5-a	3.Main Shaft		FH01	Chuck Body		1
5-b	3.Main Shaft	Yes	FH00	Chuck Body CE		1
6-a	3.Main Shaft		4FCJS	Chuck Jaw Set (No.6-7) RT	1 Set 3 Pcs.	1 Set
6-b	3.Main Shaft	Yes	4JCJS	Chuck Jaw Set (No.6-7) KS	(1 Set 3 Pcs.)	1 Set
7-a	3.Main Shaft		70RT	Chuck Jaw Insert Set RT	1 Set 3 Pcs.	1 Set
7-b	3.Main Shaft	Yes	70KS	Chuck Jaw Insert Set KS	(1 Set 3 Pcs.)	1 Set
8	3.Main Shaft		W07A	Hex Socket Head Cap Screw	(M7 x 53.5)	6
9-a	3.Main Shaft		F020	Rear Chuck Complete Set (No.10-17)		1 Set
9-b	3.Main Shaft	Yes	F084	Rear Chuck Complete Set (No.10-17)		1 Set
10	3.Main Shaft		F0S3	Rear Scroll		1
11-a	3.Main Shaft		F0S1	Rear Chuck Receptacle		1
11-b	3.Main Shaft	Yes	4FC1	Rear Chuck Receptacle CE		1
12-a	3.Main Shaft		F0S2	Rear Chuck Cover 410 g.		1
12-b	3.Main Shaft	Yes	4FC2	Rear Chuck Cover CE		1
13	3.Main Shaft		F0SS	Rear Chuck Jaw	(1 Set 3 Pcs.)	1 Set
14	3.Main Shaft		-	Reamer Screw	(M5 x 15)	2
15	3.Main Shaft		-	Round Head Machine Screw	(M5 x 15)	4
16	3.Main Shaft		WG05	Spring Washer	(5mm)	4
17	3.Main Shaft		WC05	Nut (M5)		6
18	3.Main Shaft		WM64	Roll Pin	(6 x 12)	3
19	3.Main Shaft		F008	Self - adjusting Thrust Ring		1
20	3.Main Shaft		WC06	U - nut	(M6)	1
21	3.Main Shaft		F030	Spring	(23mm)	1
22	3.Main Shaft		W069	Hex Socket Head Cap Screw	(M6 x 55)	1

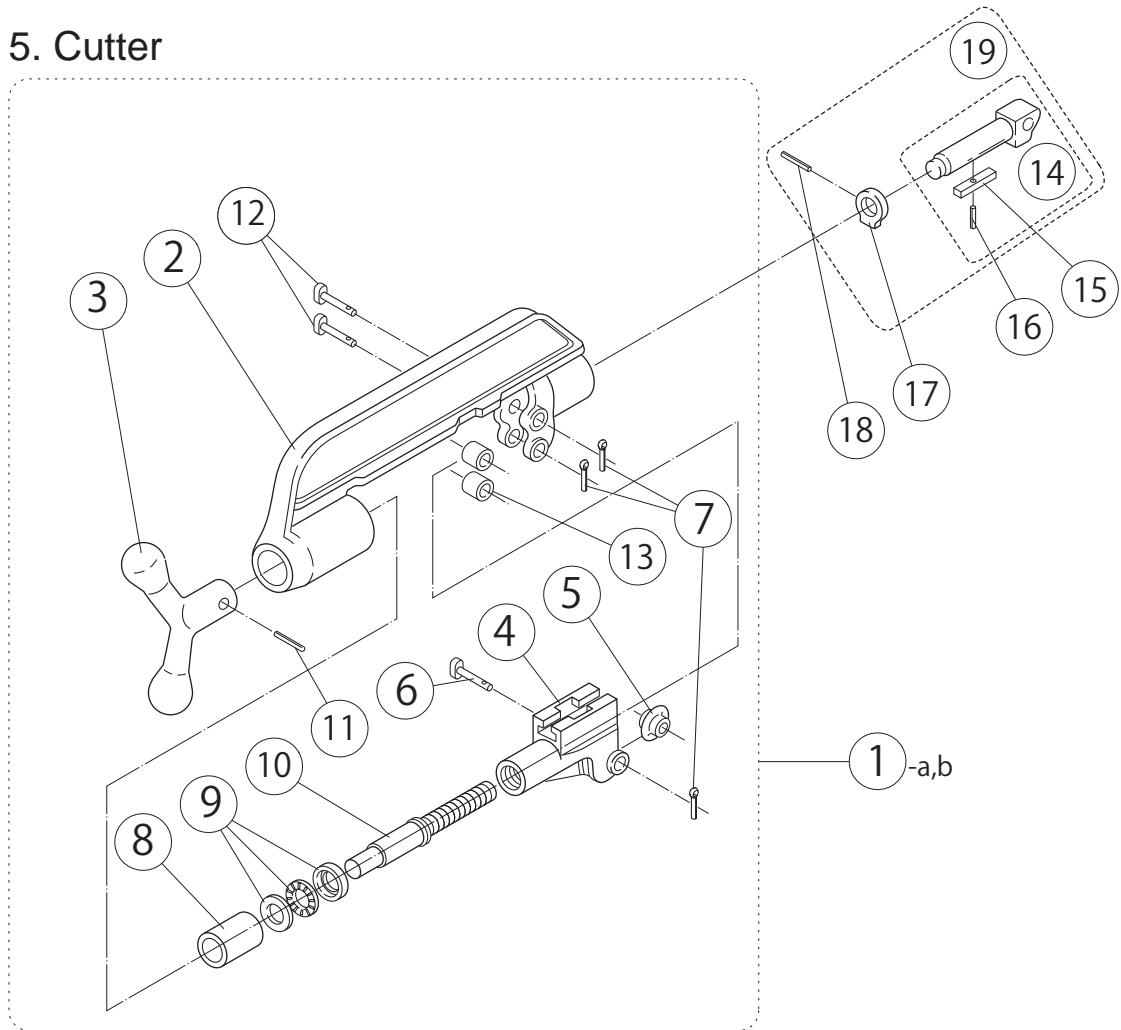
# N80A Series - 4. Carriage, Motor



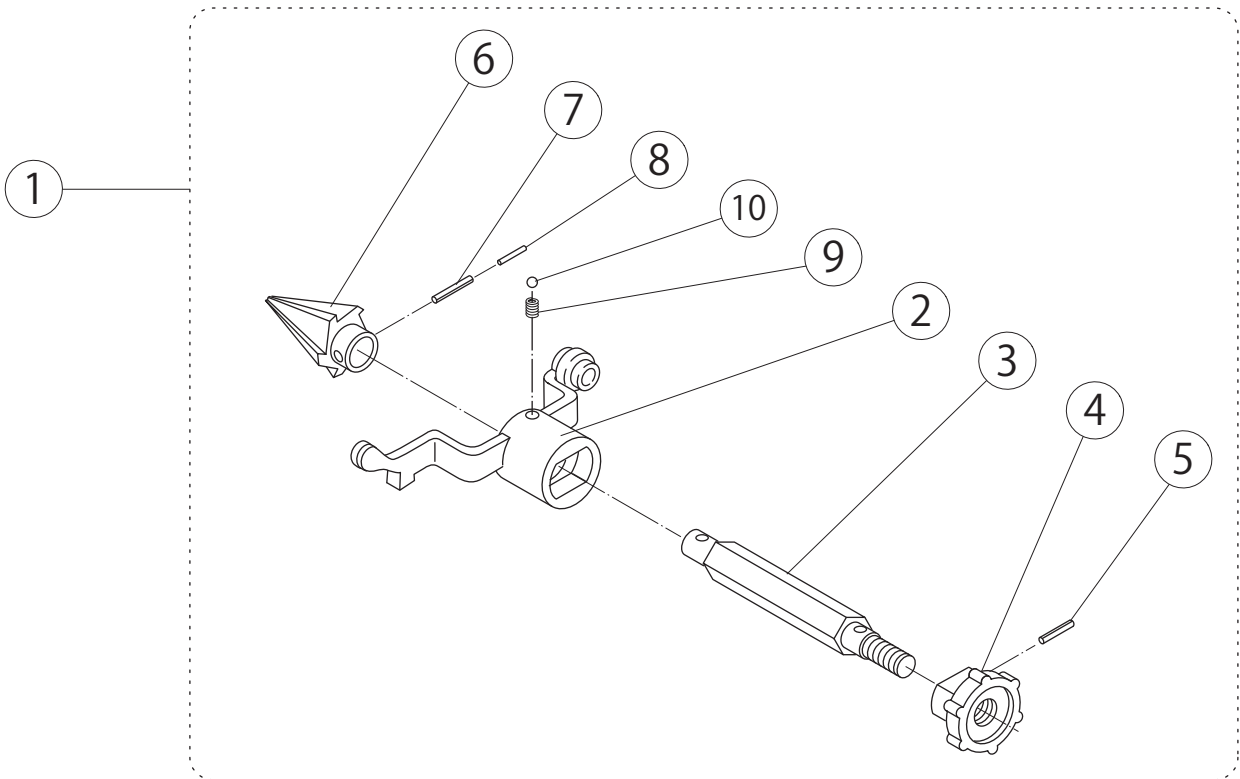
NO.	Page Title	CE	Parts No.	Parts Name	Spec.	Q'ty
1	4.Carriage, Motor		F004	Carriage		1
2	4.Carriage, Motor		F010	Carriage Support Bar A	**Discontinued	1
3	4.Carriage, Motor		F011	Carriage Support Bar B	**Discontinued	1
4	4.Carriage, Motor		F081	Carriage Support Coller	**Discontinued	1
5	4.Carriage, Motor		F013	Carriage Handle		1
6	4.Carriage, Motor		WM53	Grooved Pin	(5 x 35)	1
7	4.Carriage, Motor		G044	Oil Tube Connector		1
8	4.Carriage, Motor		W665	Hex Socket Set Screw	(Cone point, M6 x 15)	1
9	4.Carriage, Motor		F032	Nipple		2
10	4.Carriage, Motor		0410-120	Tube	(120 mm)	1
11	4.Carriage, Motor		FM43	Distance piece		1
12	4.Carriage, Motor		ZJ50	Pipe Band S	(10 mm)	5
13	4.Carriage, Motor		G861	Oil Notch (with $\phi$ 10 stopper)		1
14-a	4.Carriage, Motor		F062	Motor (Series Motor) ( 700 w,220 v ) R	**Discontinued	1
14-b	4.Carriage, Motor		F062T	Motor (Series Motor) ( 700W,220V ) R		1
14-c	4.Carriage, Motor		F067	Motor (Series Motor) ( 700W,220V) R/L	**Discontinued	1
14-d	4.Carriage, Motor		F070	Motor (Series Motor) ( 700W,220V/230V ) R/L	**Discontinued	1
14-e	4.Carriage, Motor		F061	Motor (Series Motor) ( 600W,100V) R	**Discontinued	1
14-f	4.Carriage, Motor		F061T	Motor (Series Motor) ( 600W,100V) R		1
14-g	4.Carriage, Motor		F068	Motor (Series Motor) ( 600W,100V) R/L	**Discontinued	1
14-h	4.Carriage, Motor		F068T	Motor (Series Motor) ( 600W,100V) R/L	**Discontinued	1
14-i	4.Carriage, Motor		F064	Motor (Series Motor) ( 600W,115V) R/L	**Discontinued	1
14-j	4.Carriage, Motor		F071	Motor (Series Motor) ( 600W,115/120V) R	**Discontinued	1
14-k	4.Carriage, Motor		F069	Motor (Series Motor) ( 700W,200V ) R	**Discontinued	1
15	4.Carriage, Motor		FM16	Carbon Brush Holder	(1 Set 2 Pcs.)	1 Set
16	4.Carriage, Motor		FM10	Carbon Brush (Auto - Stop)	1 Set 2 Pcs.	1 Set
17	4.Carriage, Motor		FM17	Carbon Brush Cap	(1 Set 2 Pcs.)	1 Set
18-a	4.Carriage, Motor		F80P	Gear Pump Complete Set ( Page 4, No.24-37)	Old No.F021	1
18-b	4.Carriage, Motor		F063	Gear Pump Complete Set (Page 4 No.24-37)(R/L)		1
19	4.Carriage, Motor		1035	Joint		2
20	4.Carriage, Motor		0410-550	Oil line tube Red (Intake)	(550 mm) Old no. : ZD12	1
21	4.Carriage, Motor		0410-700	Oil line tube Red (Feed)	(700 mm) Old no. : ZD11	1
22	4.Carriage, Motor		W68A	Hex - socket Set Screw	(Cone point, M8 x 14)	1
23	4.Carriage, Motor		W051	Hex Socket Head Cap Screw	(M5 x 16)	1
24	4.Carriage, Motor		Z5S6	O - Ring	(S - 63)	1
25	4.Carriage, Motor		WG08	Spring Washer	(8mm)	2
26	4.Carriage, Motor		W083	Hex Socket Head Cap Screw	(M8 x 25)	2
27	4.Carriage, Motor		1013	Motor Fixed Pin		1
28	4.Carriage, Motor		W686	Hex Socket Head Screw	(Half dog M8 x 22)	1
29	4.Carriage, Motor		WC08	Jam Nut	(M8)	1
30	4.Carriage, Motor		1076	Cutter Arm Stop pin		1
31	4.Carriage, Motor		1096	Reamer Arm Stop Pin		1

# N80A Series - 5. Cutter / 6. Reamer

## 5. Cutter



## 6. Reamer



NO.	Page Title	CE	Parts No.	Parts Name	Spec.	Q'ty
1-a	5.Cutter		0FCU1S	Cutter Complete Set (to be ordered with No.19)		1 Set
1-b	5.Cutter		0FCU3S	Cutter Complete Set (for PLP)	**Discontinued	1 Set
2	5.Cutter		8071	Cutter frame		1
3	5.Cutter		F012	Cutter Handle		1
4	5.Cutter		F024	Cutter Guide		1
5	5.Cutter		135076	Cutter Wheel	*See the product list	1
6	5.Cutter		2471	Cutter Pin S		1
7	5.Cutter		WN12	Spring Cotter	(#2.3x15)	3
8	5.Cutter		3463	Cutter Bush		1
9	5.Cutter		1302	Thrust Bearing Assembly	(51002)	1
10	5.Cutter		F025	Feed Screw		1
11	5.Cutter		WL65	Roll Pin	(6X28)	1
12	5.Cutter		5079	Cutter Pin L		2
13	5.Cutter		5074	Cutter Roller		2
14	5.Cutter		8074	Cutter Arm (No. 14-16)		1
15	5.Cutter		-	Key (WR04)	(10X8X50)	1
16	5.Cutter		-	Roll Pin	(3X15)	1
17	5.Cutter		8075	Stop Ring		1
18	5.Cutter		WL37	Roll Pin	(3X25)	1
19	5.Cutter		-	Cutter Arm Set (No. 14-18)		1 Set
1	6.Reamer		0FRM1S	Complete Reamer		1 Set
2	6.Reamer		F119	Reamer Arm	Old No. 1091	1
3	6.Reamer		1092	Reamer Shaft		1
4	6.Reamer		1094	Reamer Knop		1
5	6.Reamer		WL41	Roll Pin	(4X10)	1
6	6.Reamer		8093	Reamer Cone	19Z129	1
7	6.Reamer		WL86	Roll Pin	(8X35)	1
8	6.Reamer		WLA1	Roll Pin	(4.75X35)	1
9	6.Reamer		5096	Spring	(8X10)	1
10	6.Reamer		WQ08	Steel Ball	(8)	1



## **REX INDUSTRIES CO., LTD.**

**Overseas Sales Dept. (Head Office & Factory):**

**1-9-3, Hishiyahigashi, Higashi Osaka 578-0948, Japan**

**Tel.: +81 - (0)72 - 961 - 9820 Fax.: +81 - (0)72 - 961 - 9878**

**URL** <http://www.rexind.co.jp>