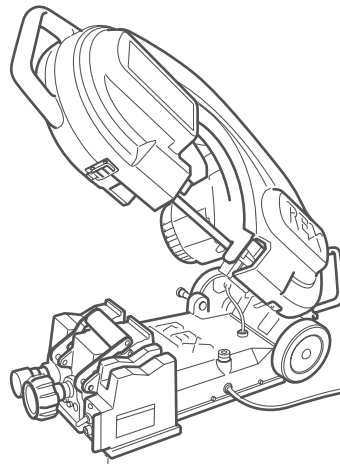


REX Band Saw series

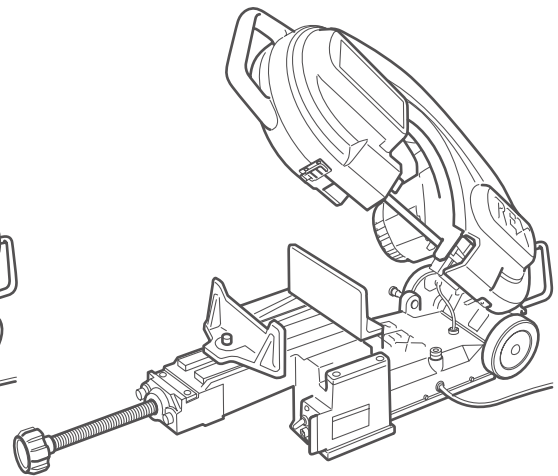
MANTIS 125·120A

Parts List

As of August 2008



XB125
(CHAIN VICE)



XB120A
(FLAT VICE)

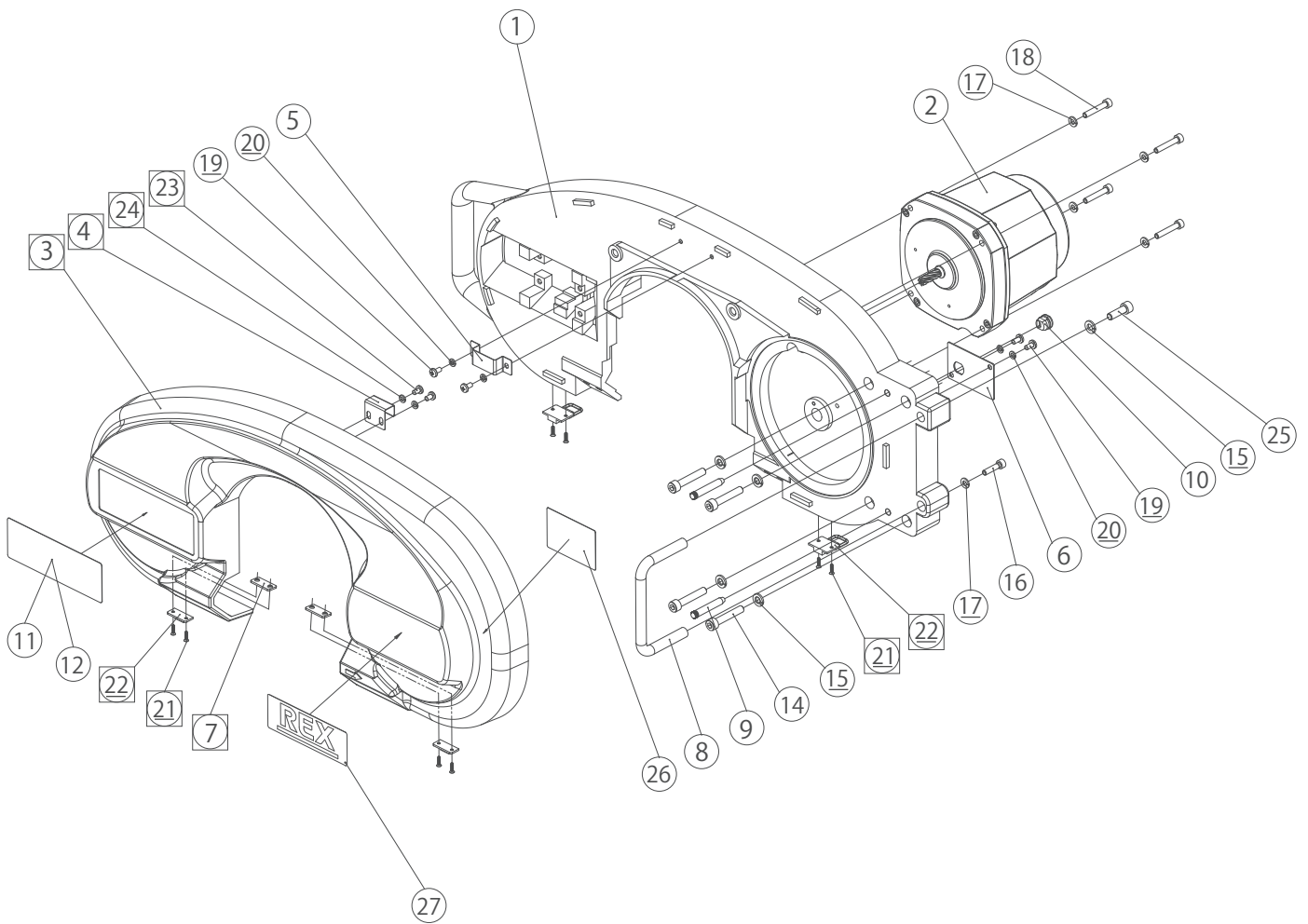
CONTENTS

1. Frame · Motor
2. Pulley · Tension
3. SELI
4. Load adjustment · Switch
5. Main shaft · Hinge
6. Chain vice
7. Flat vice

REX

XB125 • 120A

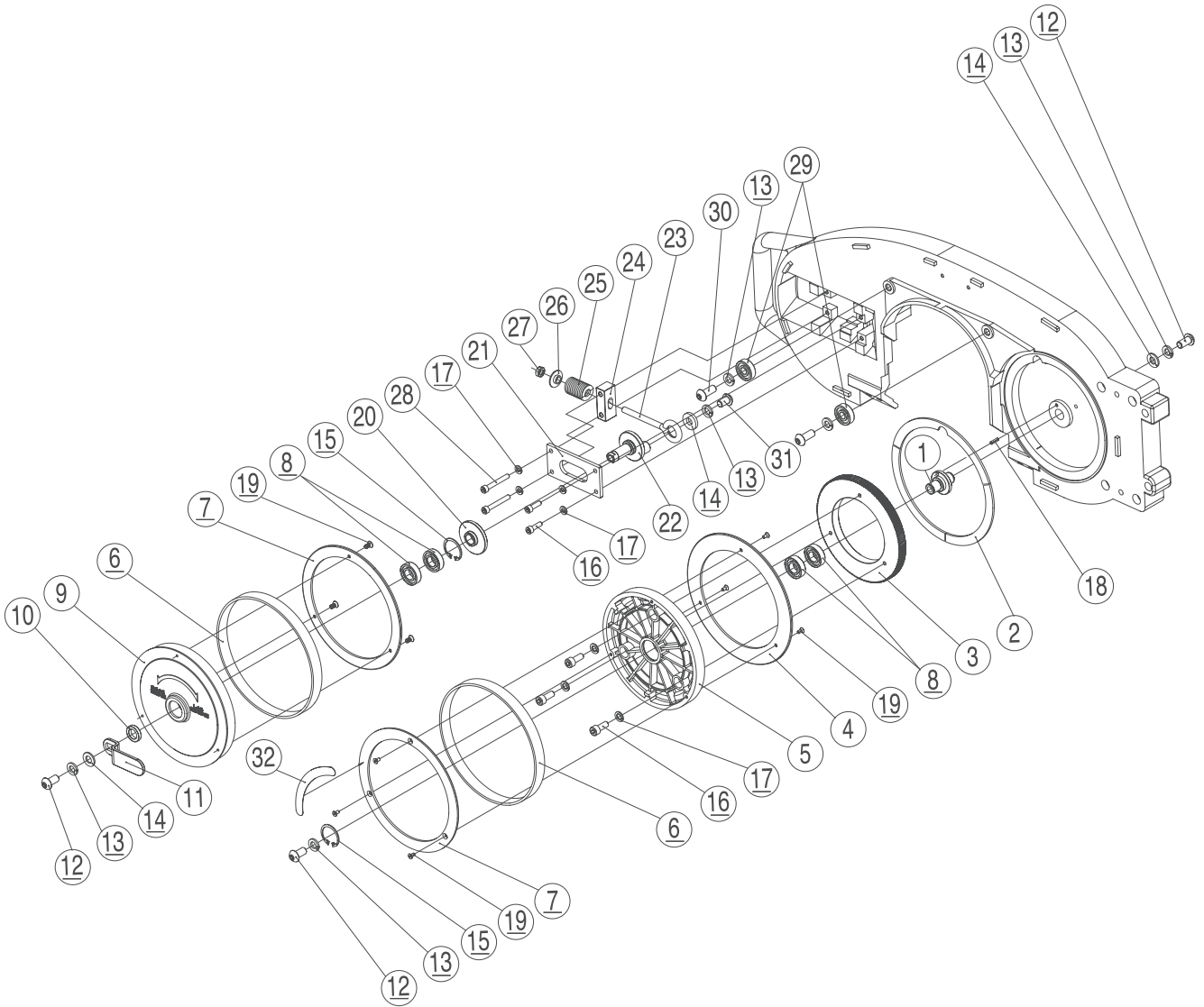
1. FRAME, MOTOR



Frame cover set (SJ38S)

Item No	Page Title	Part No.	Part Name	Spec.	XB125	XB120A Flat Vice	Q'ty	Reference
1	1.Frame, Motor	SJ32	Frame		○	○	1	
2	1.Frame, Motor	SK07	Motor (100V)		○	○	1	
2	1.Frame, Motor	SK83	Motor (220V)		○	○	1	
3	1.Frame, Motor	SJ38	Frame cover		○	○	1	
4	1.Frame, Motor	SJ42	Frame hook		○	○	1	
5	1.Frame, Motor	SJ43	Catch plate		○	○	1	
6	1.Frame, Motor	SJ39	Connector cover		○	○	1	
7	1.Frame, Motor	SJ41	Nut plate		○	○	2	
8	1.Frame, Motor	SJ40	Grip		○	○	1	
9	1.Frame, Motor	SJ37	Positioning pin		○	○	2	
10	1.Frame, Motor	SK09	Cable lock		○	○	1	
11	1.Frame, Motor	SK32	Name plate	(XB125 Chain Vice)-Japanese-	○		1	
11	1.Frame, Motor	SK86	Name plate	(XB125 Chain Vice)-English-	○		1	
12	1.Frame, Motor	SK33	Name plate	(XB120A Flat vice)-Japanese-		○	1	
12	1.Frame, Motor	SK87	Name plate	(XB120A Flat vice)-English-		○	1	
14	1.Frame, Motor	SK50	Socket head cap screw	M8×45	○	○	4	
15	1.Frame, Motor	WG8A	Spring washer	8 Black	○	○	5	
16	1.Frame, Motor	W06B	Socket head cap screw	M6×25	○	○	1	
17	1.Frame, Motor	WG6A	Spring washer	6 Black	○	○	5	
18	1.Frame, Motor	W066	Socket head cap screw	M6×35	○	○	4	
19	1.Frame, Motor	W25C	Round head machine screw	M5×10 Black	○	○	4	
20	1.Frame, Motor	WG5A	Spring washer 5 Black		○	○	4	
21	1.Frame, Motor	SK51	Hex socket countersunk bolt	M3×12	○	○	4	
22	1.Frame, Motor	SK02	Cover lock		○	○	2	
23	1.Frame, Motor	SK52	Round head machine screw	M4×6 Black	○	○	2	
24	1.Frame, Motor	SK82	Flat washer	4 Black	○	○	2	
25	1.Frame, Motor	W083	Socket head cap screw	M8×25	○	○	1	
26	1.Frame, Motor	SK34	Sticker (Blade Installation)	-Japanese-	○	○	1	
26	1.Frame, Motor	SL68	Sticker (Blade Installation)	-English-	○	○	1	
27	1.Frame, Motor	5V18	REX Logo Sticker	Black and Green	○	○	1	
28	1.Frame, Motor	SJ38S	Frame cover set		○	○	1set	No.3-4,7,21-24

2. PULLEY, TENSION

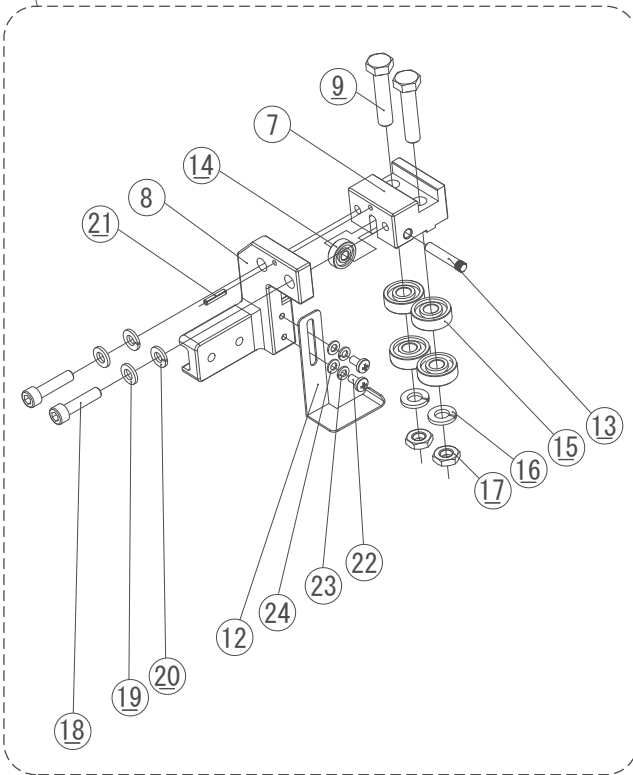


Item No	Page Title	Part No.	Part Name	Spec.	XB125	XB120A Flat Vice	Q'ty	Reference
1	2.Pulley, Tension	SJ79	Pulley A shaft		○	○	1	
2	2.Pulley, Tension	SJ44	Dustproof felt	(set of 3)	○	○	1	
3	2.Pulley, Tension	SJ36	Gear		○	○	1	
4	2.Pulley, Tension	SJ57	Pulley plate A		○	○	1	
5	2.Pulley, Tension	SJ55	Pulley A		○	○	1	
6	2.Pulley, Tension	SJ59	Rubber ring		○	○	2	
7	2.Pulley, Tension	SJ58	Pulley plate B		○	○	2	
8	2.Pulley, Tension	SK53	Bearing	6002ZZ	○	○	4	
9	2.Pulley, Tension	SJ56	Pulley B		○	○	1	
10	2.Pulley, Tension	SJ87	Collar		○	○	1	
11	2.Pulley, Tension	SJ85	Tension lever		○	○	1	
12	2.Pulley, Tension	SK54	Hex socket button head cap screw	M10 x 20	○	○	3	
13	2.Pulley, Tension	WGB0	Spring washer	10 Black	○	○	4	
14	2.Pulley, Tension	WI03	Flat washer	10 Black	○	○	3	
15	2.Pulley, Tension	SK55	C-shaped snap ring	32	○	○	2	
16	2.Pulley, Tension	W063	Socket head cap screw	M6X20	○	○	5	
17	2.Pulley, Tension	WG6A	Spring washer	6 Black	○	○	7	
18	2.Pulley, Tension	WL42	Roll pin	4 x 12	○	○	1	
19	2.Pulley, Tension	SK56	Hex socket countersunk bolt	M4X10	○	○	9	
20	2.Pulley, Tension	SJ83	Shaft B bush		○	○	1	
21	2.Pulley, Tension	SJ82	Tension plate		○	○	1	
22	2.Pulley, Tension	SJ80	Pulley B shaft		○	○	1	
23	2.Pulley, Tension	SJ84	Tension rod		○	○	1	
24	2.Pulley, Tension	SJ81	Rod guide		○	○	1	
25	2.Pulley, Tension	SJ86	Tension spring		○	○	1	
26	2.Pulley, Tension	SJ88	Spring cap		○	○	1	
27	2.Pulley, Tension	WE08	U-nut	M8	○	○	1	
28	2.Pulley, Tension	W067	Socket head cap screw M6X40		○	○	2	
29	2.Pulley, Tension	S701	Bearing	6200ZZ	○	○	2	
30	2.Pulley, Tension	SK57	Hex socket button head cap screw	M10 x 25	○	○	2	
31	2.Pulley, Tension	WA31	Hex socket button head cap screw	M10 x 15	○	○	1	
32	2.Pulley, Tension	SK35	Sticker (Pulley)	-Japanese-	○	○	1	
32	2.Pulley, Tension	SL69	Sticker (Pulley)	-English-	○	○	1	

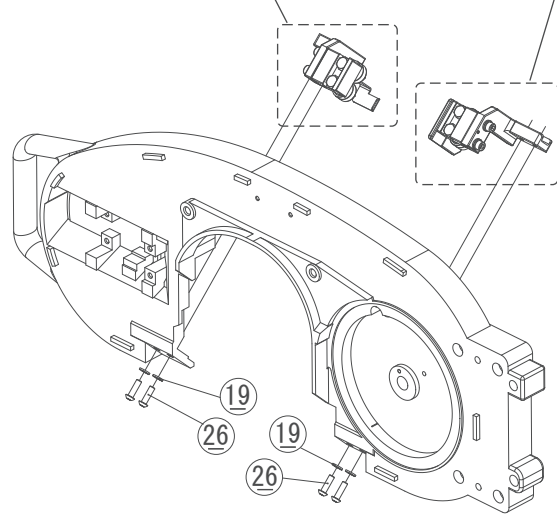
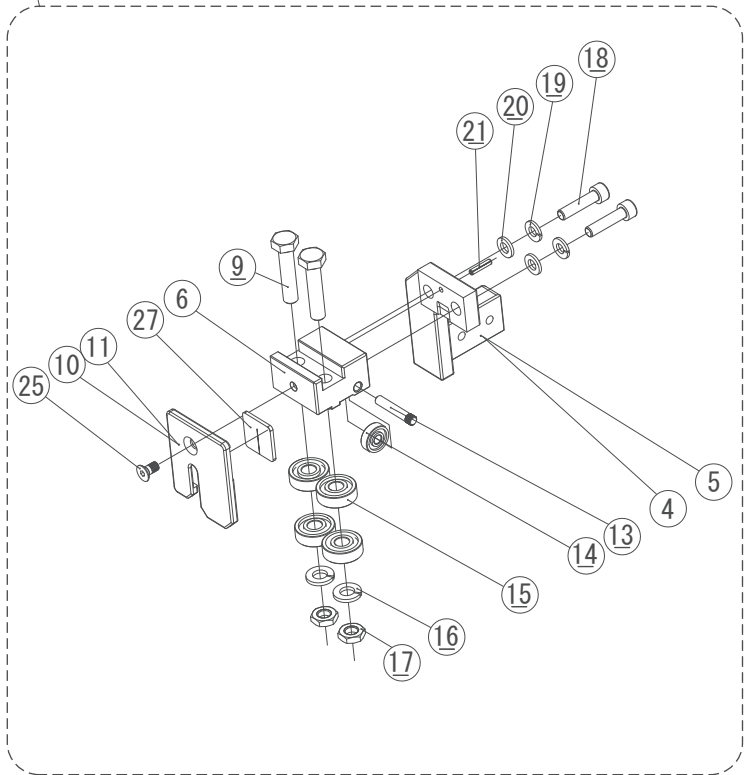
XB125 • 120A

3. SELI

3 SELI B SET

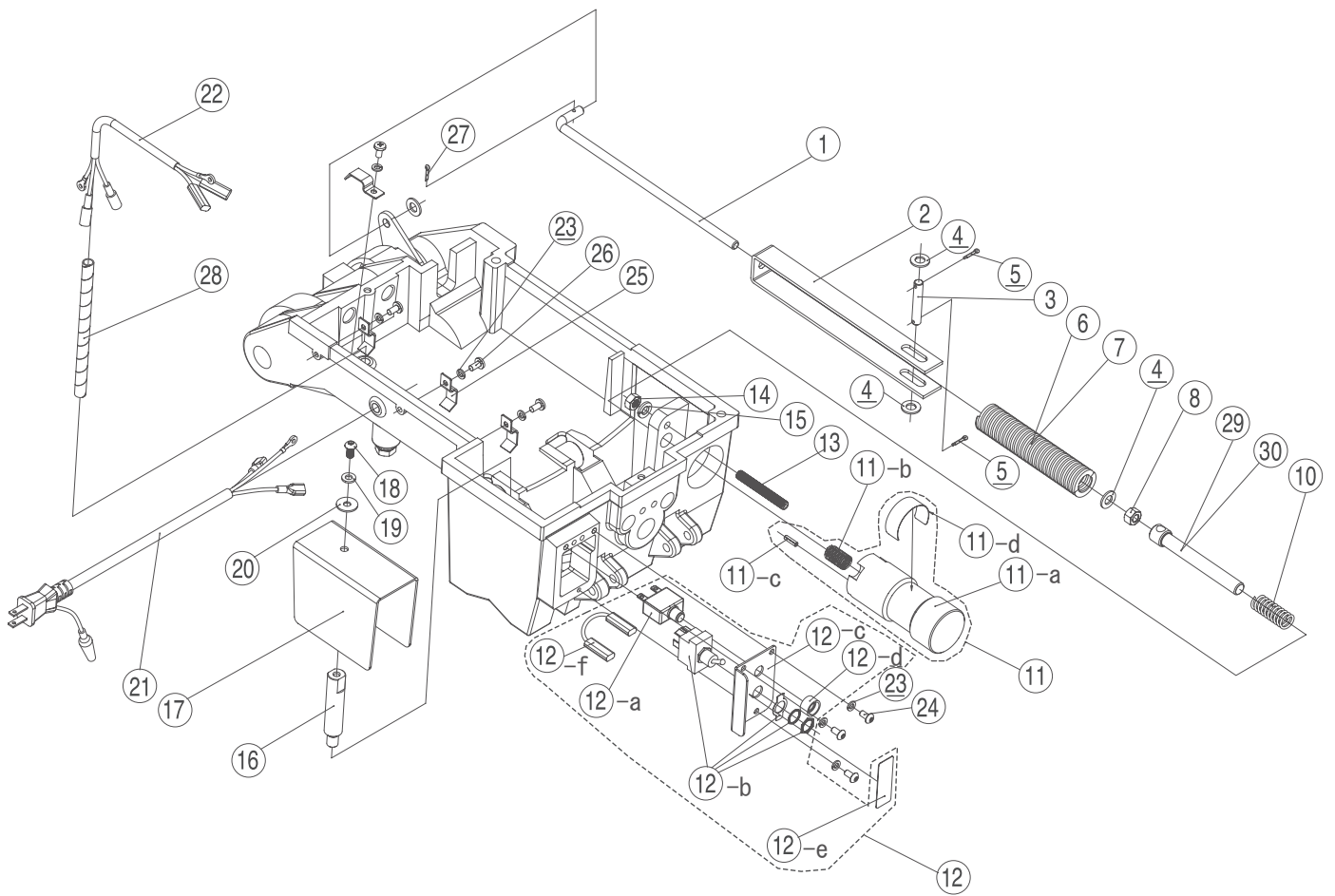


1 2 SELI A SET



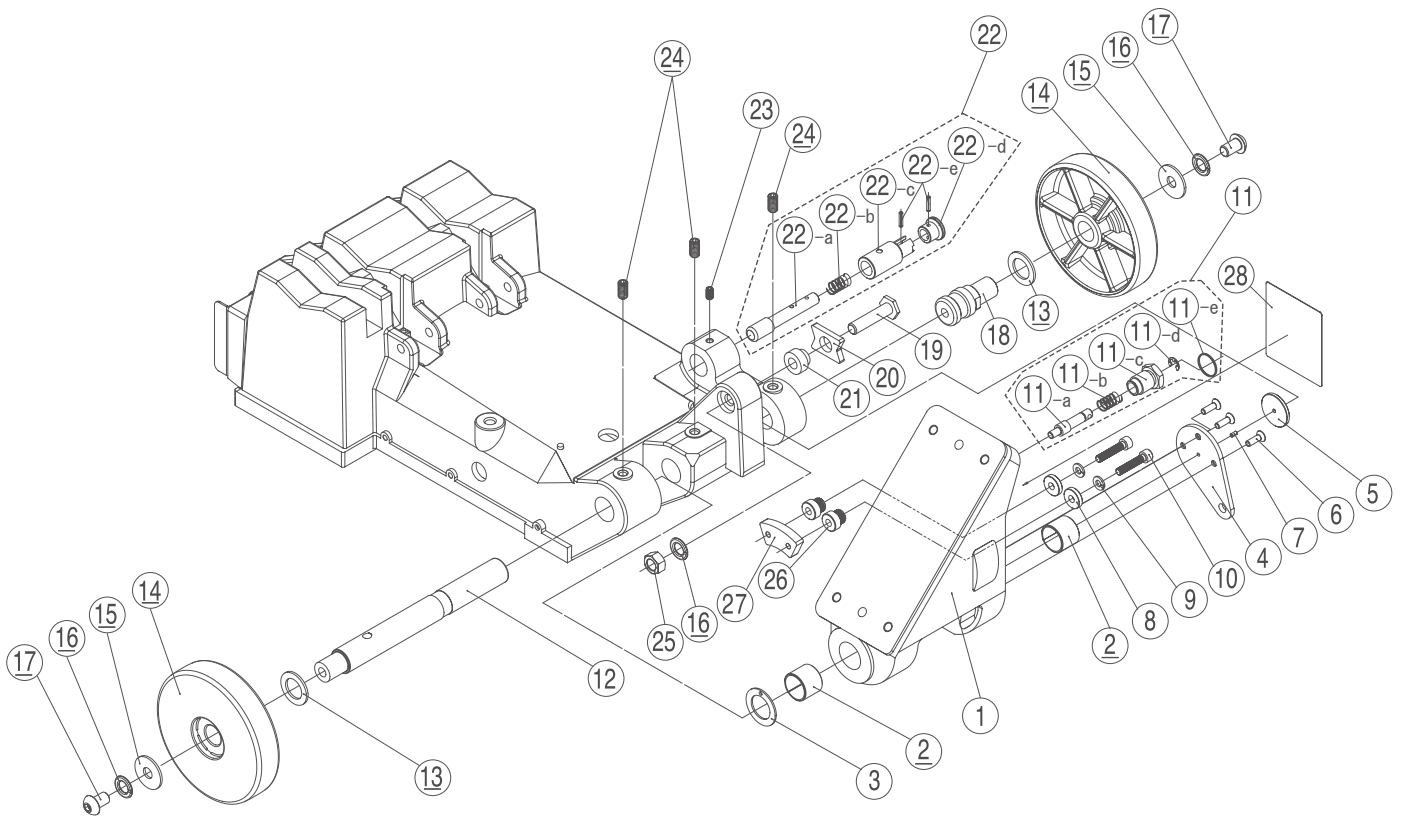
Item No	Page Title	Part No.	Part Name	Spec.	XB125	XB120A Flat Vice	Q'ty	Reference
1	3.SELI	SJ47S	SELI A Set for Chain vice	(Parts No.SJ47 + SJ45)	○		1set	
2	3.SELI	SK29S	SELI A Set for Flat vice	(Parts No.SK29 + SJ45)		○	1set	
3	3.SELI	SJ46S	SELI B Set	(Parts No.SJ46 + SJ48)	○	○	1set	
4	3.SELI	SJ47	SELI holder A	(XB125 Chain vice)	○		1	
5	3.SELI	SK29	SELI holder A	(XB120A Flat vice)		○	1	
6	3.SELI	SJ45	SELI unit A		○	○	1	
7	3.SELI	SJ46	SELI unit B		○	○	1	
8	3.SELI	SJ48	SELI holder B		○	○	1	
9	3.SELI	SJ51	SELI ShAft A		○	○	4	
10	3.SELI	SJ49	Contour plate	(XB125 Chain vice)	○		1	
11	3.SELI	SK28	Contour plate B	(XB120A Flat vice)		○	1	
12	3.SELI	SJ53	Switch kicker		○	○	1	
13	3.SELI	SJ52	SELI shaft B		○	○	2	
14	3.SELI	S703	Bearing	625ZZ	○	○	2	
15	3.SELI	SK59	Bearing	608ZZ	○	○	8	
16	3.SELI	WG8A	Spring washer	8 Black	○	○	4	
17	3.SELI	WB08	Hex nut	M8 Black	○	○	4	
18	3.SELI	SK60	Socket head cap screw	M6X22	○	○	4	
19	3.SELI	WG6A	Spring washer	6 Black	○	○	8	
20	3.SELI	WI64	Flat washer	6 Black	○	○	4	
21	3.SELI	WL3A	Roll pin	3 x 14	○	○	2	
22	3.SELI	W25C	Round head machine screw	M5 x 10 Black	○	○	2	
23	3.SELI	WG5A	Spring washer	5 Black	○	○	2	
24	3.SELI	SK61	Flat washer	5 Black	○	○	2	
25	3.SELI	SK85	Hex socket countersunk bolt	M5X10	○	○	1	
26	3.SELI	W063	Socket head cap screw	M6X20	○	○	4	
27	3.SELI	SJ50	Scraper		○	○	1	

4. LOAD ADJUSTMENT, SWITCH



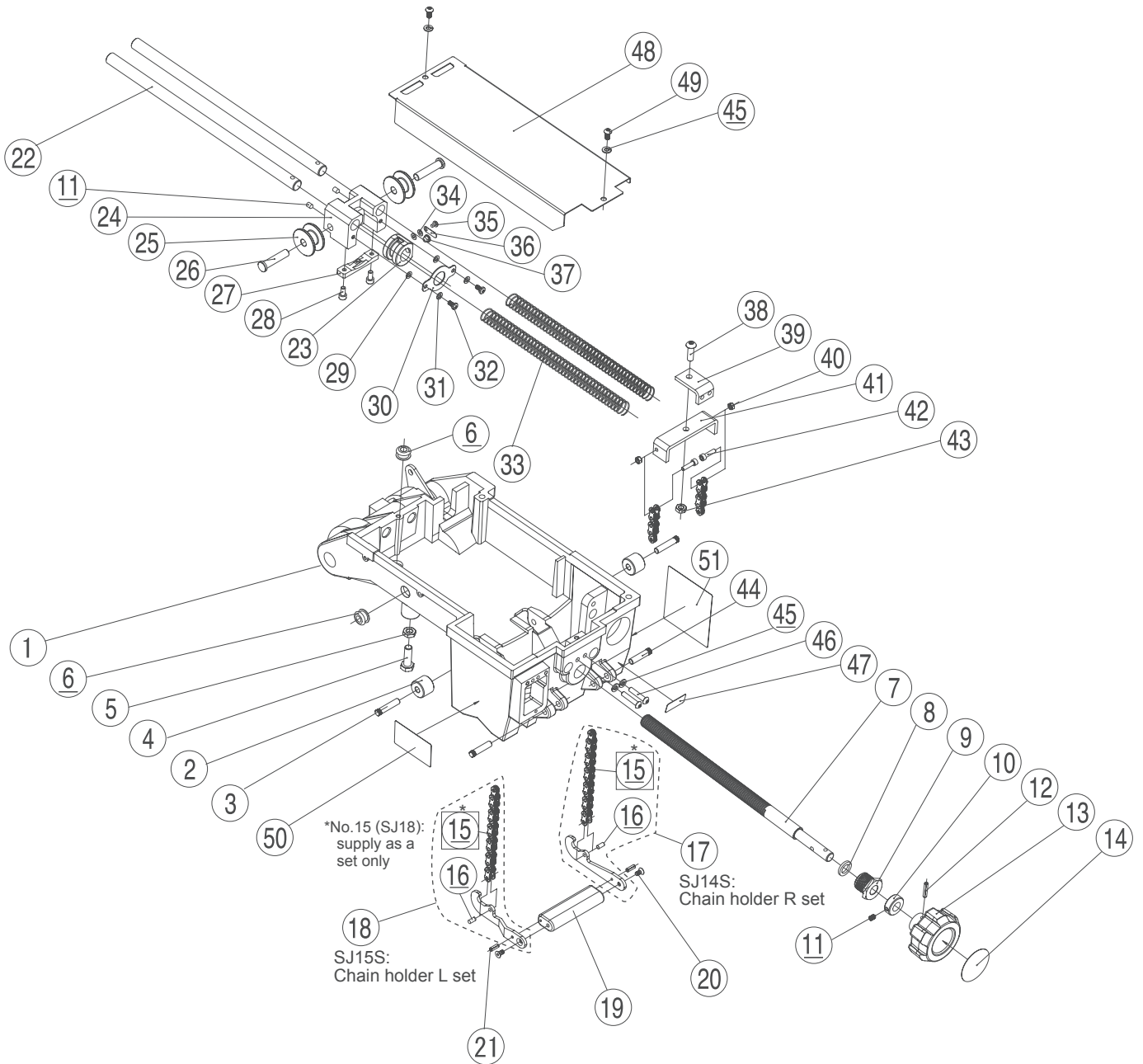
Item No	Page Title	Part No.	Part Name	Spec.	XB125	XB120A Flat Vice	Q'ty	Reference
1	4.Load adjustment, Swtich	SJ91	Load rod		○	○	1	
2	4.Load adjustment, Swtich	SJ89	Load spring holder		○	○	1	
3	4.Load adjustment, Swtich	SJ94	Load shaft pin		○	○	1	
4	4.Load adjustment, Swtich	WZ11	Flat washer	8 Black	○	○	3	
5	4.Load adjustment, Swtich	SK69	Snap pin	8	○	○	2	
6	4.Load adjustment, Swtich	SJ96	Load spring	(XB125 Chain vice)	○		1	
7	4.Load adjustment, Swtich	SK30	Load spring	(XB120A Flat vice)		○	1	
8	4.Load adjustment, Swtich	WE08	U-nut	M8	○	○	1	
10	4.Load adjustment, Swtich	SJ95	Load shaft spring		○	○	1	
11	4.Load adjustment, Swtich	SJ93S	Load knob unit		○	○	1	set of No. 11a-11d
11-a	4.Load adjustment, Swtich	SJ93	Load knob		○	○	1	To be provided as a set above
11-b	4.Load adjustment, Swtich	SK50	Helisert	M12-1.75-1.5D	○	○	1	
11-c	4.Load adjustment, Swtich	WL43	Roll pin	4 x 22	○	○	1	
11-d	4.Load adjustment, Swtich	SK38	Sticker (LMHLL)		○	○	1	
12	4.Load adjustment, Swtich	SJ99S	Switch unit 100V		○	○	1	set of No. 12a-12f
12	4.Load adjustment, Swtich	SJ99A	Switch unit 220V		○	○	1	set of No. 12a-12f
12-a	4.Load adjustment, Swtich	SL56	Thermal protector	(4A)	○	○	1	To be provided as a set above
12-b	4.Load adjustment, Swtich	SJ99	Switch	(15A/4P)	○	○	1	
12-c	4.Load adjustment, Swtich	SJ12	Switch plate		○	○	1	
12-d	4.Load adjustment, Swtich	SJ11	Breaker nut		○	○	1	
12-e	4.Load adjustment, Swtich	SK39	Sticker (ON-OFF)		○	○	1	
12-f	4.Load adjustment, Swtich	SK06	Lead wire		○	○	1	
13	4.Load adjustment, Swtich	SK70	Hex socket set screw	M8X60 cup point	○	○	1	
14	4.Load adjustment, Swtich	WB08	Hex nut	M8 Black	○	○	1	
15	4.Load adjustment, Swtich	WG8A	Spring washer	8 Black	○	○	1	
16	4.Load adjustment, Swtich	SJ19	Base post		○	○	1	
17	4.Load adjustment, Swtich	SJ17	Wiring cover		○	○	1	
18	4.Load adjustment, Swtich	SK71	Hex socket button head cap screw	M6 x 12	○	○	1	
19	4.Load adjustment, Swtich	WG6A	Spring washer	6 Black	○	○	1	
20	4.Load adjustment, Swtich	SK72	Flat washer (large)	6 Black	○	○	1	
21	4.Load adjustment, Swtich	SJ97	Power cable (100V)		○	○	1	
21	4.Load adjustment, Swtich	SL57	Power cable (220V)	Old No.:SK88	○	○	1	
22	4.Load adjustment, Swtich	SJ98	Motor cable		○	○	1	
23	4.Load adjustment, Swtich	WG5A	Spring washer 5 Black		○	○	7	
24	4.Load adjustment, Swtich	SK62	Hex socket button head cap screw	M5 x 10	○	○	3	
25	4.Load adjustment, Swtich	SJ16	Cable clip		○	○	4	
26	4.Load adjustment, Swtich	W25C	Round head machine screw	M5X10 Black	○	○	4	
27	4.Load adjustment, Swtich	SK73	Split pin	3 X 14	○	○	1	
28	4.Load adjustment, Swtich	SK40	Spiral tube	(180L)	○	○	1	
29	4.Load adjustment, Swtich	SJ90	Load shaft	(XB125 Chain vice)	○		1	
30	4.Load adjustment, Swtich	SK24	Load shaft	(XB120A Flat vice)		○	1	

5. MAIN SHAFT, HINGE



Item No	Page Title	Part No.	Part Name	Spec.	XB125	XB120A Flat Vice	Q'ty	Reference
1	5.Main shaft, Hinge	SJ54	Hinge		○	○	1	
2	5.Main shaft, Hinge	SK36	Bush	LFZB22-25	○	○	2	
3	5.Main shaft, Hinge	SK37	Thrust washer	LFZW20	○	○	1	
4	5.Main shaft, Hinge	SJ92	Load plate		○	○	1	
5	5.Main shaft, Hinge	SJ76	Thrust washer		○	○	1	
6	5.Main shaft, Hinge	SK63	Hex socket countersunk bolt	M5X15	○	○	3	
7	5.Main shaft, Hinge	SK96	Parallel pin	10 x 50	○	○	1	Old No.WL32
8	5.Main shaft, Hinge	SJ67	Cam plate washer		○	○	2	
9	5.Main shaft, Hinge	WG6A	Spring washer	6 Black	○	○	2	
10	5.Main shaft, Hinge	SK64	Hex socket button head cap screw	M6 x 30	○	○	2	
11	5.Main shaft, Hinge	SJ62S	Kick pin unit		○	○	1	set of No. 11a-11e
11-a	5.Main shaft, Hinge	SJ62	Kick pin		○	○	1	
11-b	5.Main shaft, Hinge	SJ72	Kick pin spring		○	○	1	
11-c	5.Main shaft, Hinge	SJ63	Kick pin collar		○	○	1	To be provided as a set above
11-d	5.Main shaft, Hinge	WY06	E-shaped snap ring	6	○	○	1	
11-e	5.Main shaft, Hinge	SJ71	Ring		○	○	1	
12	5.Main shaft, Hinge	SJ74	Main shaft		○	○	1	
13	5.Main shaft, Hinge	SJ77	Wheel washer A		○	○	2	
14	5.Main shaft, Hinge	SJ78	Wheel		○	○	2	
15	5.Main shaft, Hinge	SK65	Flat washer (large)	10 Black	○	○	2	
16	5.Main shaft, Hinge	WGB0	Spring washer	10 Black	○	○	2	
17	5.Main shaft, Hinge	WA31	Hex socket button head cap screw	M10 x 15	○	○	2	
18	5.Main shaft, Hinge	SJ75	Adjustment shaft		○	○	1	
19	5.Main shaft, Hinge	SJ70	Cam shaft		○	○	1	
20	5.Main shaft, Hinge	SJ64	Stopper cam		○	○	1	
21	5.Main shaft, Hinge	SJ69	Cam bush		○	○	1	
22	5.Main shaft, Hinge	SJ61S	Lock pin unit		○	○	1	set of No. 22a-22e
22-a	5.Main shaft, Hinge	SJ61	Lock pin		○	○	1	
22-b	5.Main shaft, Hinge	SJ73	Lock pin spring		○	○	1	
22-c	5.Main shaft, Hinge	SJ60	Lock pin collar		○	○	1	To be provided as a set above
22-d	5.Main shaft, Hinge	SJ68	Lock pin knob		○	○	1	
22-e	5.Main shaft, Hinge	WL3A	Spring pin	3 x 14	○	○	2	
23	5.Main shaft, Hinge	W766	Hex socket set screw	M6 x 10 cup point	○	○	1	
24	5.Main shaft, Hinge	SK67	Hex socket set screw	M8 x 16 cup point	○	○	3	
25	5.Main shaft, Hinge	SK68	Hex nut	M10 1 Black	○	○	1	
26	5.Main shaft, Hinge	SJ66	Plate bush		○	○	2	
27	5.Main shaft, Hinge	SJ65	Cam plate		○	○	1	
28	5.Main shaft, Hinge	SK47	Sticker (Frame Lock)	-Japanese-	○	○	1	
28	5.Main shaft, Hinge	SL80	Sticker (Frame Lock)	-English-	○	○	1	

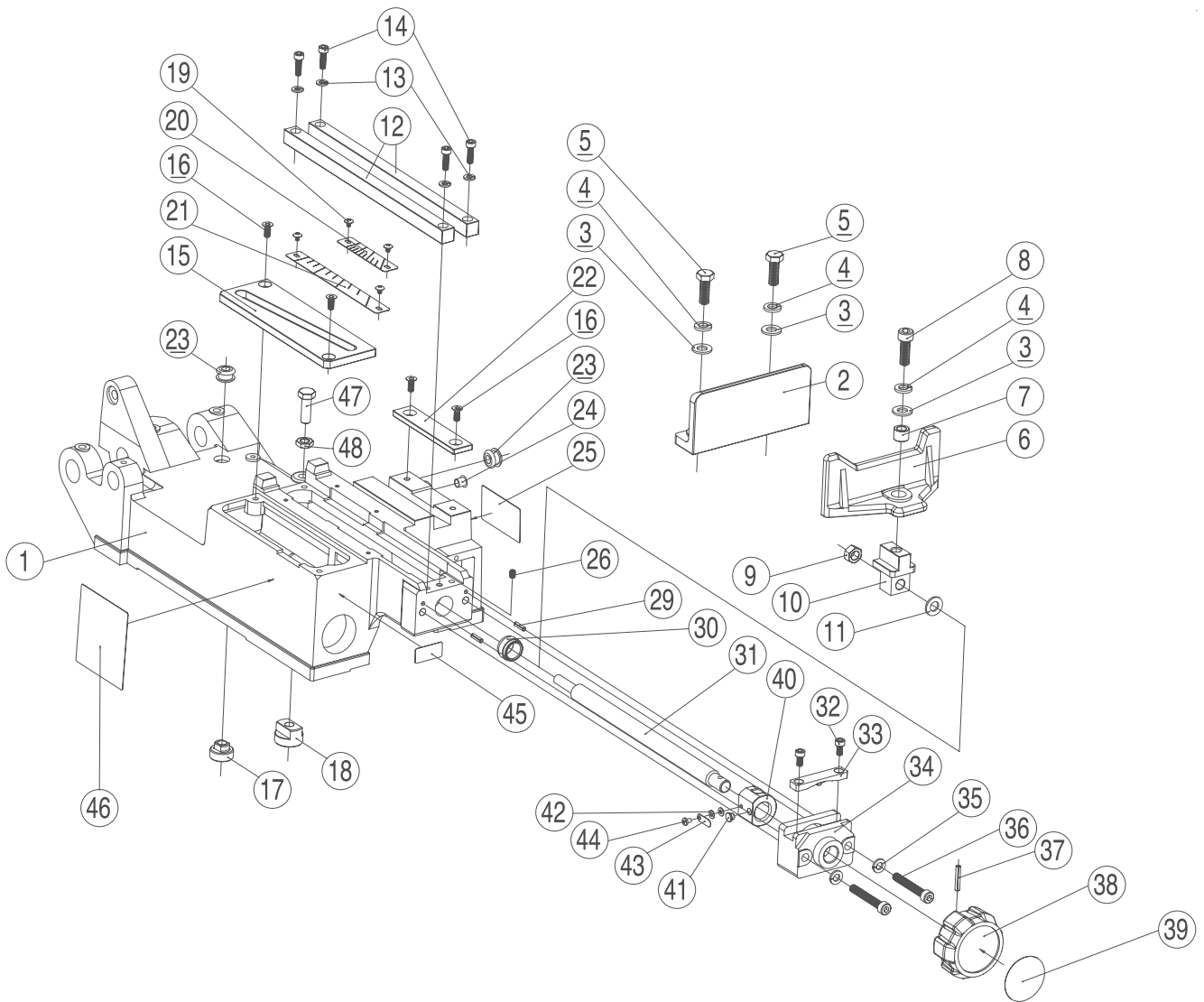
6. CHAIN VICE



Item No	Page Title	Part No.	Part Name	Spec.	XB125	XB120A Flat Vice	Q'ty	Reference
1	6.Chain vice(XB125)	SJ01	Base (chain vice)		○		1	
2	6.Chain vice(XB125)	SJ07	Roller		○		2	
3	6.Chain vice(XB125)	SJ08	Roller pin		○		2	
4	6.Chain vice(XB125)	SK74	Hex bolt	M10 x 30 Black	○		1	
5	6.Chain vice(XB125)	SK75	Hex nut	3 M10 Black	○		1	
6	6.Chain vice(XB125)	S609	Cord bush		○	○	2	
7	6.Chain vice(XB125)	SJ03	Feed screw		○		1	
8	6.Chain vice(XB125)	SJ04	Thrust washer		○		1	
9	6.Chain vice(XB125)	SJ02	Bush bolt		○		1	
10	6.Chain vice(XB125)	SJ05	Feed screw collar		○		1	
11	6.Chain vice(XB125)	W663	Hex socket set screw	M6 x 10 cone point	○		3	
12	6.Chain vice(XB125)	WL5B	Roll pin	5X28	○	○	1	
13	6.Chain vice(XB125)	SJ06	Handle		○	○	1	
14	6.Chain vice(XB125)	SK46	Sticker (Knob)		○		1	
15	6.Chain vice(XB125)	SJ18	Leaf chain		○		2	Supply as a set (No.17 or 18) only
16	6.Chain vice(XB125)	SK41	Pin		○		2	
17	6.Chain vice(XB125)	SJ14S	Chain holder R	Supply as a set with No.15, 16	○		1	Old No.SJ14
18	6.Chain vice(XB125)	SJ15S	Chain holder L	Supply as a set with No.15, 16	○		1	Old No.SJ15
19	6.Chain vice(XB125)	SJ13	Chain handle		○		1	
20	6.Chain vice(XB125)	SK63	Hex socket countersunk bolt	M5X15	○		2	
21	6.Chain vice(XB125)	WL34	Roll pin	3 x 12	○		2	
22	6.Chain vice(XB125)	SJ27	Chain guide shaft		○		2	
23	6.Chain vice(XB125)	SJ21	Half nut		○		1	
24	6.Chain vice(XB125)	SJ20	Chain guide		○		1	
25	6.Chain vice(XB125)	SJ23	Chain roller		○		2	
26	6.Chain vice(XB125)	SJ25	Roller shaft		○		2	
27	6.Chain vice(XB125)	SJ31	Stopper plate		○		1	
28	6.Chain vice(XB125)	W053	Socket head cap screw	M5X12	○	○	2	
29	6.Chain vice(XB125)	SK61	Flat washer	4 Black	○		2	
30	6.Chain vice(XB125)	SJ24	Plate		○		1	
31	6.Chain vice(XB125)	WG5A	Spring washer	5 Black	○		2	
32	6.Chain vice(XB125)	W25C	Round head machine screw	M5X10 Black	○		2	
33	6.Chain vice(XB125)	SJ26	Return spring		○		2	
34	6.Chain vice(XB125)	WG4A	Flat washer	4 Black	○		2	
35	6.Chain vice(XB125)	SK52	Round head machine screw	M4X6 Black	○	○	1	
36	6.Chain vice(XB125)	SJ30	Plunger spring		○	○	1	
37	6.Chain vice(XB125)	SJ29	Plunger pin		○	○	1	
38	6.Chain vice(XB125)	SK76	Hex socket button head cap screw	M8 x 20	○		1	
39	6.Chain vice(XB125)	SJ28	Chain holder B		○		1	
40	6.Chain vice(XB125)	WE05	U-nut	M8	○		2	
41	6.Chain vice(XB125)	SJ22	Chain holder A		○		1	
42	6.Chain vice(XB125)	W056	Socket head cap screw	M5X20	○		2	
43	6.Chain vice(XB125)	WE08	U-nut	M8	○		1	
44	6.Chain vice(XB125)	SJ09	Hook pin		○		2	
45	6.Chain vice(XB125)	WG6A	Spring washer	6 Black	○	○	4	
46	6.Chain vice(XB125)	SK64	Hex socket button head cap screw	M6 x 30	○		2	
47	6.Chain vice(XB125)	SK42	Load Adjustment Sticker (small)	-Japanese-	○	○	1	
47	6.Chain vice(XB125)	SK89	Load Adjustment Sticker (small)	-English-	○		1	
48	6.Chain vice(XB125)	SJ10	Bottom cover		○		1	
49	6.Chain vice(XB125)	SK71	Hex socket button head cap screw	M6 x 12	○		2	
50	6.Chain vice(XB125)	SK43	Sticker (Motor Protection Device)	-Japanese-	○		1	
50	6.Chain vice(XB125)	SL79	Sticker (Motor Protection Device)	-English-	○		1	
51	6.Chain vice(XB125)	SK44	Load Adjustment Sticker (large, with Table)	-Japanese-	○		1	
51	6.Chain vice(XB125)	SK90	Load Adjustment Sticker (large, with Table)	-English-	○		1	

XB120A

7. FLAT VICE



Item No	Page Title	Part No.	Part Name	Spec.	XB125	XB120A Flat Vice	Q'ty	Reference
1	7.Flat vice(XB120A)	SK10	Base (flat vice)			○	1	
2	7.Flat vice(XB120A)	SK11	Vice A			○	1	
3	7.Flat vice(XB120A)	WI03	Flat washer	10		○	3	
4	7.Flat vice(XB120A)	WGB0	Spring washer	10 Black		○	3	
5	7.Flat vice(XB120A)	SK77	Hex bolt	M10 x 35 Black		○	2	
6	7.Flat vice(XB120A)	SK12	Vice B			○	1	
7	7.Flat vice(XB120A)	SK23	Spacer			○	1	
8	7.Flat vice(XB120A)	W003	Socket head cap screw	M10X30		○	1	
9	7.Flat vice(XB120A)	WE10	U-nut	M10		○	1	
10	7.Flat vice(XB120A)	SK18	Slide block			○	1	
11	7.Flat vice(XB120A)	S795	Washer			○	1	
12	7.Flat vice(XB120A)	SK16	Guide block			○	2	
13	7.Flat vice(XB120A)	WG6A	Spring washer	6 Black	○	○	4	
14	7.Flat vice(XB120A)	W063	Socket head cap screw	M6X20		○	4	
15	7.Flat vice(XB120A)	SK14	Plate A			○	1	
16	7.Flat vice(XB120A)	SK78	Hex socket countersunk bolt	M6X15		○	4	
17	7.Flat vice(XB120A)	SK20	Nut B			○	1	
18	7.Flat vice(XB120A)	SK19	Nut A			○	1	
19	7.Flat vice(XB120A)	SK79	Truss screw	M4X6 Black		○	4	
20	7.Flat vice(XB120A)	SK27	Angle index B			○	1	
21	7.Flat vice(XB120A)	SK26	Angle index A			○	1	
22	7.Flat vice(XB120A)	SK15	Plate B			○	1	
23	7.Flat vice(XB120A)	S609	Cord bush		○	○	2	
24	7.Flat vice(XB120A)	SK31	Hole plug	(HP-10)		○	1	
25	7.Flat vice(XB120A)	SK43	Sticker (Motor Protection Device)	-Japanese-		○	1	
25	7.Flat vice(XB120A)	SL79	Sticker (Motor Protection Device)	-English-		○	1	
26	7.Flat vice(XB120A)	W765	Hex socket set screw	M6 x 8 cup point		○	1	
29	7.Flat vice(XB120A)	WL4D	Roll pin	4 x 14		○	2	
30	7.Flat vice(XB120A)	SK21	Base bush			○	1	
31	7.Flat vice(XB120A)	SK17	Feed screw			○	1	
32	7.Flat vice(XB120A)	W053	Socket head cap screw	M5 x 12	○	○	2	
33	7.Flat vice(XB120A)	SJ31	Stopper plate			○	1	
34	7.Flat vice(XB120A)	SK13	Feed screw holder			○	1	
35	7.Flat vice(XB120A)	WG8A	Spring washer	8 Black		○	2	
36	7.Flat vice(XB120A)	W08K	Socket head cap screw	M8 x 55		○	2	
37	7.Flat vice(XB120A)	WL5B	Roll pin	5 x 28	○	○	1	
38	7.Flat vice(XB120A)	SJ06	Handle		○	○	1	
39	7.Flat vice(XB120A)	SK45	Sticker (Knob)			○	1	
40	7.Flat vice(XB120A)	SK22	Half nut B	(XB120A Flat vice)		○	1	
41	7.Flat vice(XB120A)	SJ29	Plunger pin		○	○	1	
42	7.Flat vice(XB120A)	SK82	Flat washer	4 Black		○	2	
43	7.Flat vice(XB120A)	SJ30	Plunger spring		○	○	1	
44	7.Flat vice(XB120A)	SK52	Round head machine screw	M4X6 Black	○	○	1	
45	7.Flat vice(XB120A)	SK42	Load Adjustment Sticker (small)	-Japanese-	○	○	1	
45	7.Flat vice(XB120A)	SK91	Load Adjustment Sticker (small)	-English-		○	1	
46	7.Flat vice(XB120A)	SK44	Load Adjustment Sticker (large, with Table)	-Japanese-	○	○	1	
46	7.Flat vice(XB120A)	SK92	Load Adjustment Sticker (large, with Table)	-English-		○	1	
47	7.Flat vice(XB120A)	SK80	Hex bolt	M10X30 Black		○	1	
48	7.Flat vice(XB120A)	SK81	Hex nut	3 M10 Black		○	1	

REX

REX INDUSTRIES CO., LTD.

Overseas Sales Dept. (Head Office & Factory):

1-9-3, Hishiyahigashi, Higashi Osaka 578-0948, Japan

Tel.: +81 - (0)72 - 961 - 9820 Fax.: +81 - (0)72 - 961 - 9878

URL <http://www.rexind.co.jp>