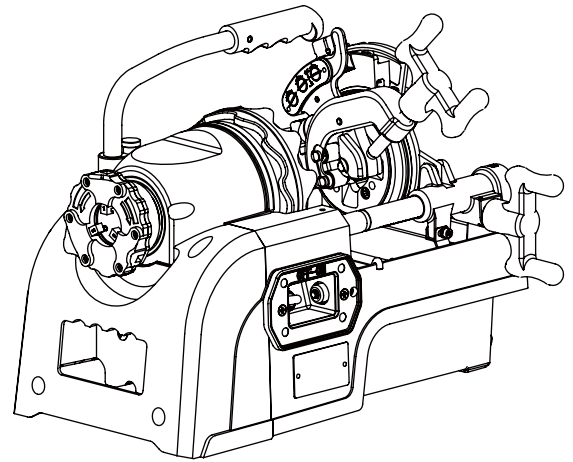
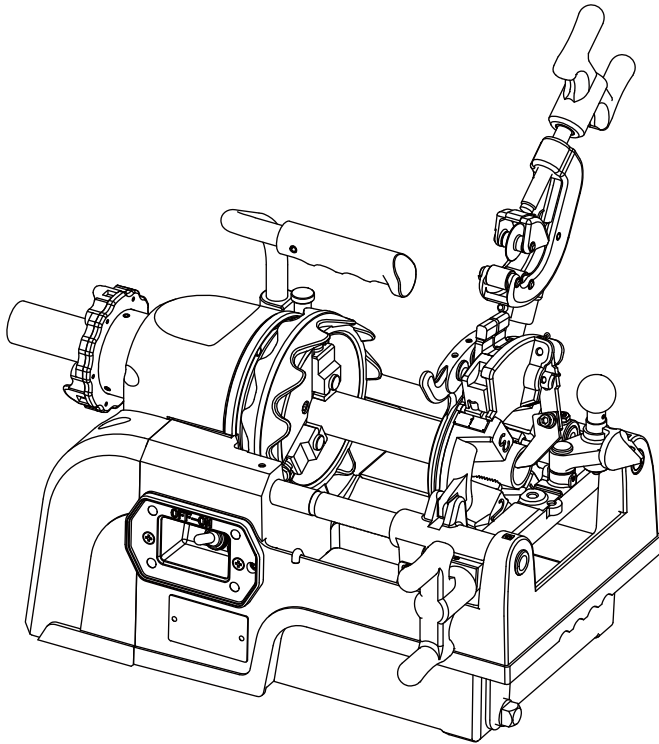


REX
ELECTRIC PIPE THREADING MACHINE

F25A Series

Parts List



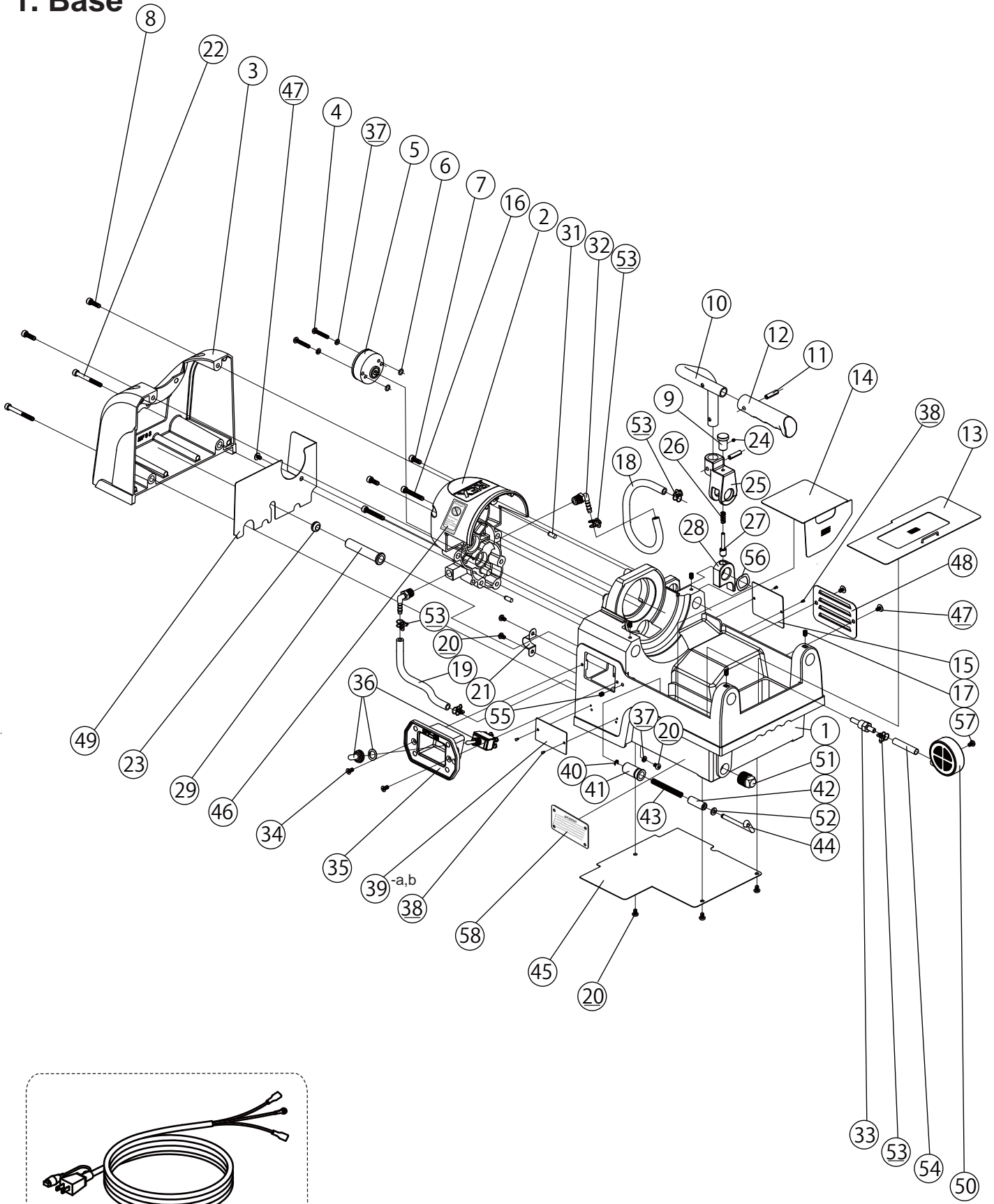
CONTENTS

1. Base
2. Main Shaft, Motor
3. Carriage
4. Cutter / Reamer
5. Motor

REX

F25A Series

1. Base



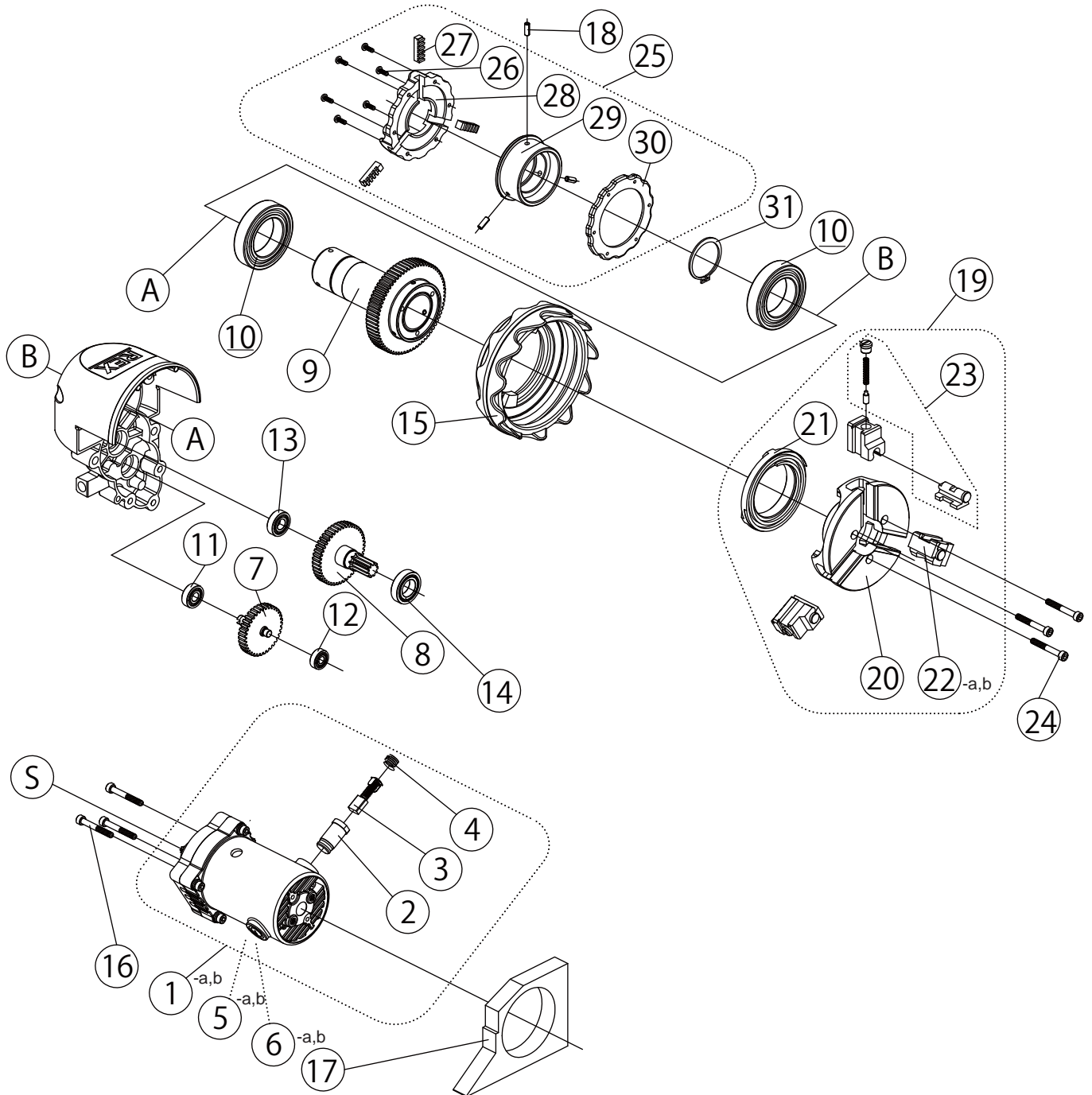
2019.10.16

REX

P a	Item No.	Part No.	Part Name	Spec	Q'ty	Compatibility with NS25A	Remarks
1.	1	MF01	Base		1	×	
1.	2	MF02	Transmission case		1	×	
1.	3	MF03	Rear cover		1	×	
1.	4	W256	Pan head machine screw	(M5×30)	2	○	Old No.W25J(*with spring washer)
1.	5	TY37C	Gear pump		1	○	Old No.TY37
1.	6	Z507	O-ring	(P7)	2	○	
1.	7	W062	Hex socket head cap screw	(M6×16)	2	×	
1.	8	W063	Hex socket head cap screw	(M6×20)	2	×	
1.	9	MYA3	Carrying handle movable block fix pin		1	○	Old No.MY30C
1.	10	MF11	Carrying handle		1	×	
1.	11	WL6B	Roll pin	(6×25)	2	○	
1.	12	MY28	Carrying handle grip		1	○	
1.	13	MF05	Scrap receiver (L)		1	×	
1.	14	MF06	Scrap receiver (S)		1	×	
1.	15	MY91	Plate (for changing carbon brushes)		1	○	
1.	16	W067	Hex socket head cap screw	(M6×40)	2	×	
1.	17	W663	Hex socket set screw	(cone point, M6x10)	4	○	
1.	18	0410-340	Oil line tube R (Feed)	(340mm / Red)	1	○	
1.	19	0410-175	Oil line tube R (Intake)	(175mm / Red)	1	○	
1.	20	W251	Pan head machine screw	(M5×8)	6	○	
1.	21	7098	Saddle clamp	(C-15)	1	○	
1.	22	W069	Hex socket head cap screw	(M6×55)	2	○	
1.	23	MF16	Grommet	(BU-687-C)	1	×	
1.	24	W645	Hex socket set screw	(cone point, M4×5)	1	○	Old type:M4×4
1.	25	MF13	Carrying handle movable block		1	×	
1.	26	MY32	Carrying handle fixed spring		1	○	
1.	27	MYA4	Carrying handle fixed pin guide		1	○	Old No.MY31C
1.	28	MYA2	Carrying handle fixed block		1	○	Old No.MY90
1.	29	7021	D5.8 Cord bush		1	○	Old No.TY25
1.	30-a	MY2B	Cabtyre cord for motor	(100V/110V) JP,TW	1	○	
1.	30-b	MY2A	Cabtyre cord for motor	(115V / 120V / 220V)	1	○	
1.	31	WN09	Parallel pin	(B-type, 6×15)	2	○	
1.	32	MF14	Hose elbow	(R1/4)	2	×	
1.	33	T056	Nipple		1	○	
1.	34	W346	Oval head machine screw	(M5×10)	2	○	
1.	35	MF07	Switch case		1	×	
1.	36	MY20C	Switch		1	○	
1.	37	WG05	Spring washer	(5)	3	○	Old No.W25J(*No.4:2pcs)
1.	38	WN34	Rivet	(#4×5)	4	○	
1.	39-a	-	Name plate	for 25A3 self-open	1	×	not for sale
1.	39-b	-	Name plate	for 25A manual-open	1	×	not for sale
1.	40	WY04	Snap ring	(4)	1	○	
1.	41	MY39	Spring receptacle B		1	○	
1.	42	MY40	Spring receptacle C		1	○	
1.	43	MY43	Spring		1	○	
1.	44	MY41	Adjustment bar		1	○	
1.	45	MF10	Bottom cover		1	×	
1.	46	9A46	Caution sticker		1	○	not for sale
1.	47	W558	Truss machine screw	(M5×8)	3	○	
1.	48	MF08	Side cover		1	×	
1.	49	MF09	Partition		1	×	
1.	50	N048	Strainer	with WA55	1	○	
1.	51	WA46	Drain Plug	(R1/2)	1	○	
1.	52	WI62	Flat washer	(6)	1	×	
1.	53	ZJ50	Pipe Band S	(10mm)	5	○	
1.	54	0410-45	Tank Hose	45mm / Red	1	×	
1.	55	W662	Hex socket set screw	(M6x8, cone point)	1	○	
1.	56	WH22	Wave washer	(22)	1	×	
1.	57	WA55	Pan head tapping screw	(M5×8)	1	○	
1.	58	L099	Warning plate (English)		1	○	not for sale

F25A Series

2. Main Shaft, Motor

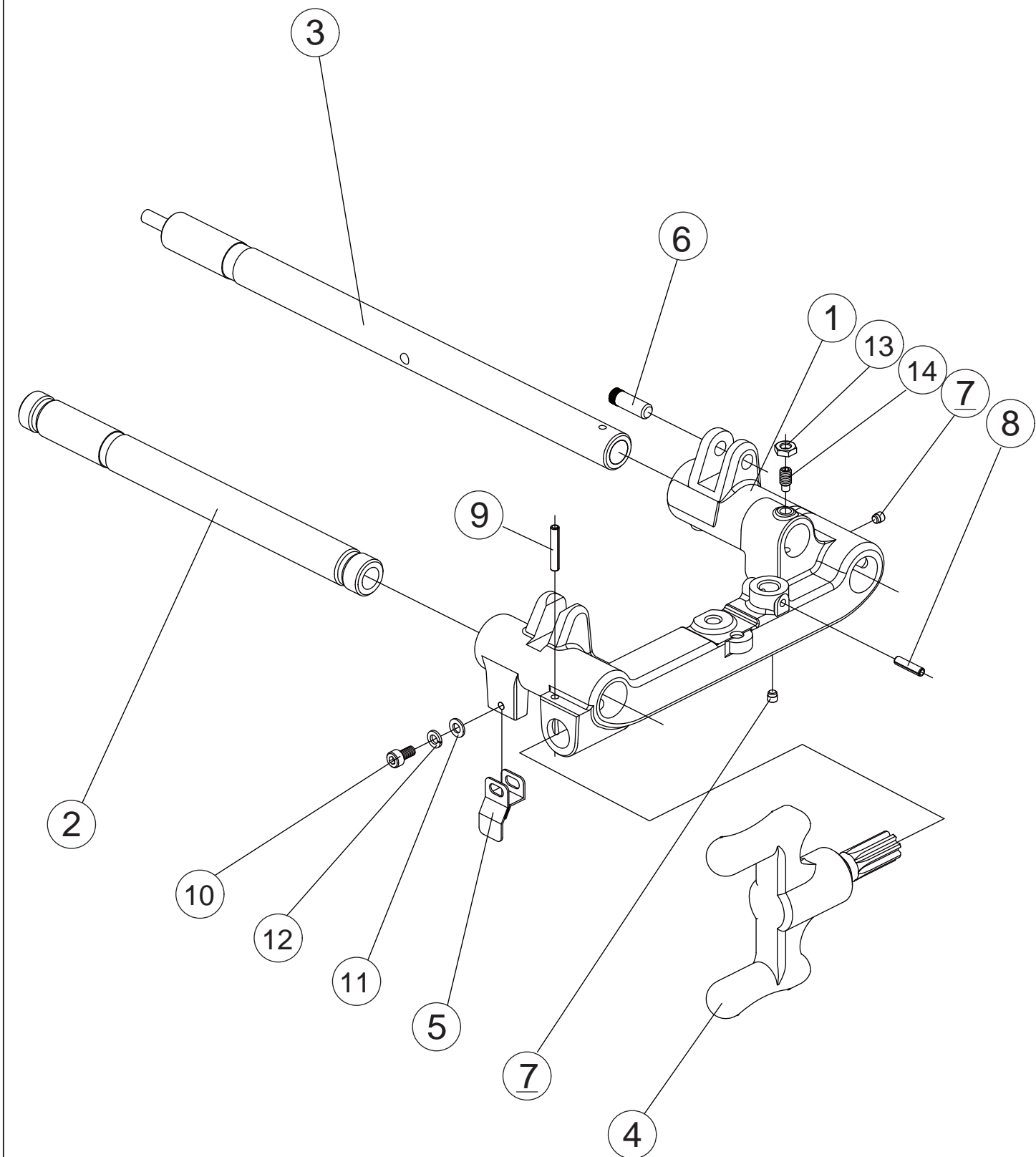


* Motor (S) goes into B.

P a	Item No.	Part No.	Part Name	Spec	Q'ty	Compatibility with NS25A	Remarks
2.	1-a	MY04T	Black Motor	(100V)	1	○	
2.	1-b	MY9B	Black Motor	(220V)	1	○	
2.	2	G2M16	Carbon brush holder		2	○	
2.	3	MYM2	Carbon brush	100-220V	1set	○	2pcs / set
2.	4	G2M17	Carbon brush cap		2	○	
2.	5-a	G2M01	Armature assembly	(100V)	1	○	
2.	5-b	G2M04	Armature assembly	(220V)	1	○	
2.	6-a	G2M05	Stator assembly	(100V)	1	○	
2.	6-b	G2M08	Stator assembly	(220V)	1	○	
2.	7	MY05C	First gear assembly		1	○	MY05·MY06
2.	8	MY07C	Second gear assembly		1	○	MY07·MY08
2.	9	02MY	Main shaft with gear		1	○	MY09·MY10
2.	10	MY0A	Bearing	(6009ZZ)	2	○	
2.	11	S374	Bearing	(6000ZZ)	1	○	
2.	12	S373	Miniature bearing	(608ZZ)	1	○	
2.	13	J300	Bearing	(6001ZZ)	1	○	
2.	14	MY0B	Bearing	(6904ZZ)	1	○	
2.	15	MY16	Hand wheel		1	○	
2.	16	W06K	Hex socket head cap screw	(M6×45 / Green Mec)	3	○	
2.	17	MF12	Insulation sponge		1	×	
2.	18	WM52C	Grooved pin	(5×14)	6	○	
2.	19	KY04	Complete chuck assembly	NS	1set	○	
2.	20	TYH0	Chuck body		1	○	
2.	21	TYS0	Chuck scroll	NS25A / F25A	1	○	
2.	22-a	H0CJS	Chuck jaw set	RT-NS	1set	○	3pcs each / set incl. G0NS
2.	22-b	H1CJS	Chuck jaw set	RT-RT	1set	○	3pcs each / set incl.
2.	23	G0NS	Chuck jaw insert set	RT-NS	1set	○	3pcs each / set
2.	24	W068	Hex socket head cap screw	(M6×45)	3	○	
2.	25	MY17	Complete rear chuck assembly		1set	○	
2.	26	W243C	Pan head machine screw	(M4×12)	6	○	
2.	27	MYSS	Rear chuck jaw		1set	○	
2.	28	MYS1	Rear chuck receptacle		1	○	
2.	29	MYS3	Rear scroll		1	○	
2.	30	MYS2	Rear chuck cover		1	○	
2.	31	WW45	Snap ring	(out side 45)	1	○	

F25A Series

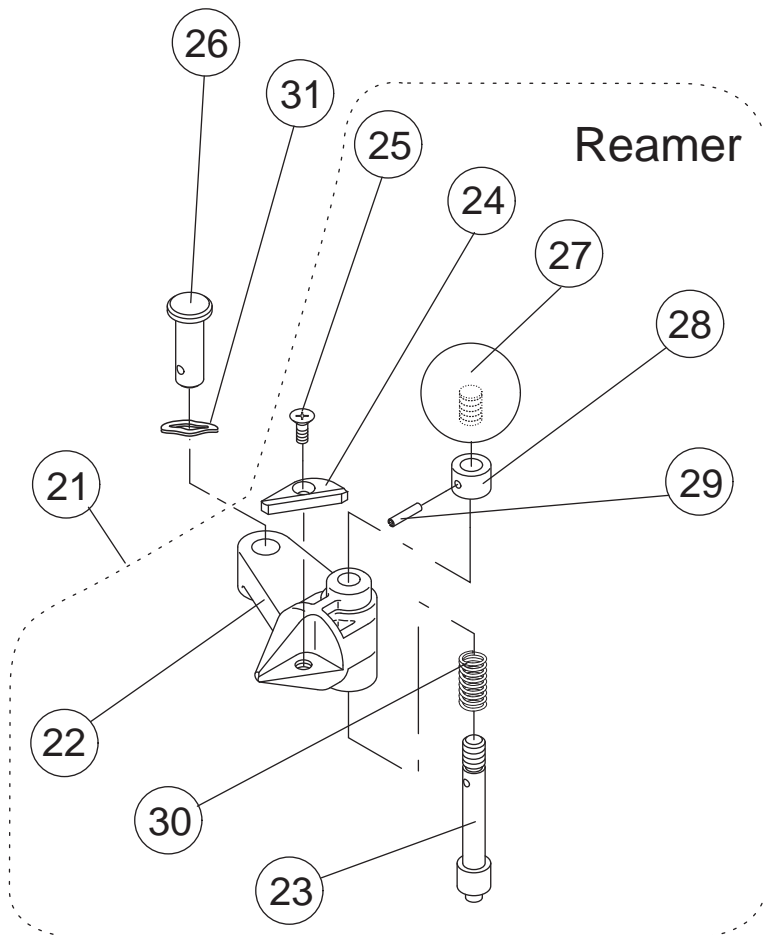
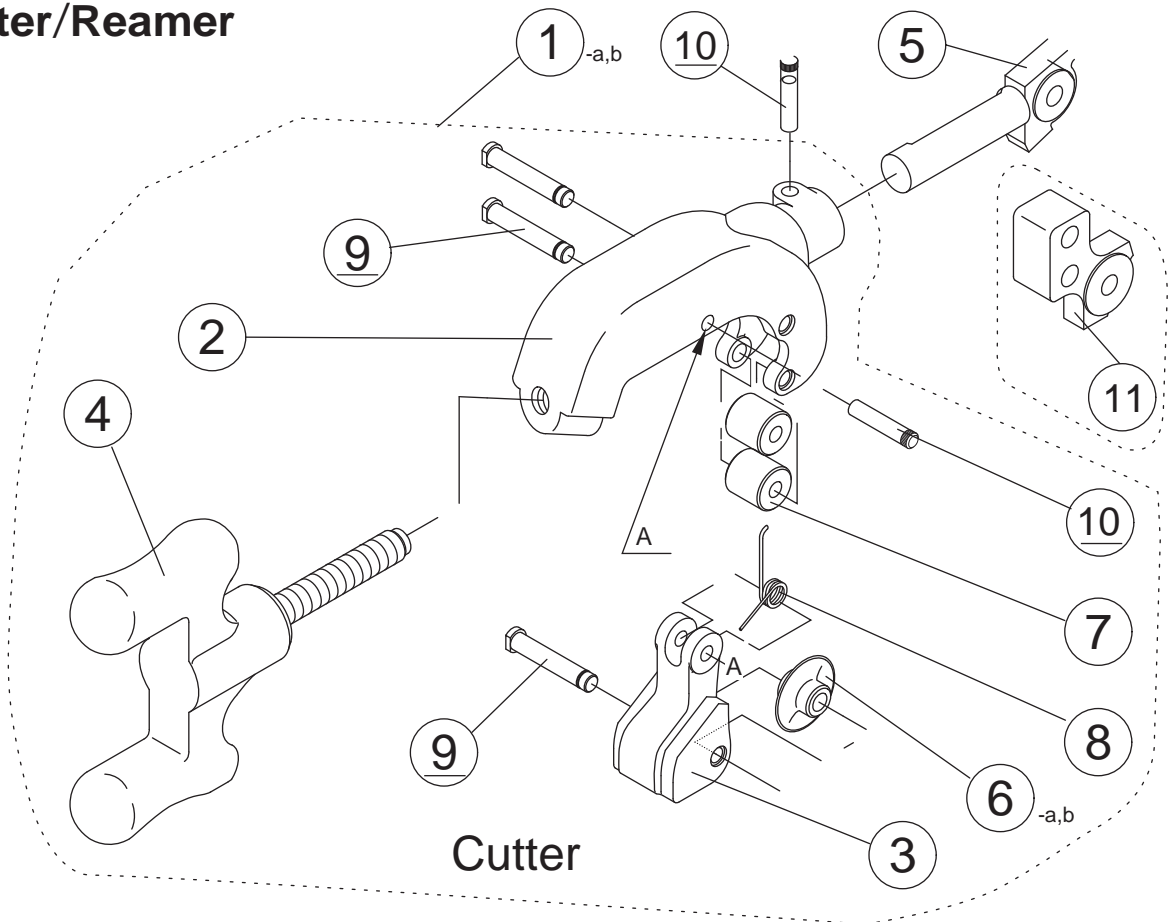
3. Carriage



Part No.	Item No.	Part No.	Part Name	Spec	Q'ty	Compatibility with NS25A	Remarks
3.1		MY33	Carriage		1	○	
3.2		MY14	Carriage support bar A		1	○	
3.3		MF04	Carriage support bar B		1	×	
3.4		MY34	Carriage handle		1	○	+MY35
3.5		MY44	Size adjustment plate		1	○	
3.6		HY62	Cutter arm stop pin		1	○	
3.7		HY49	Oil cap		2	○	
3.8		WL45	Roll pin	(4×18)	1	○	
3.9		WL47	Roll pin	(4×25)	1	○	
3.10		W052	Hex socket head cap screw	(M5×10)	1	○	
3.11		WI52	Flat washer	(5)	1	○	
3.12		WG05	Spring washer	(5)	1	○	
3.13		WD06	Jam nut	(M6)	1	○	
3.14		W865	Hex-socket set screw	(M6×12, dog point)	1	○	

F25A Series

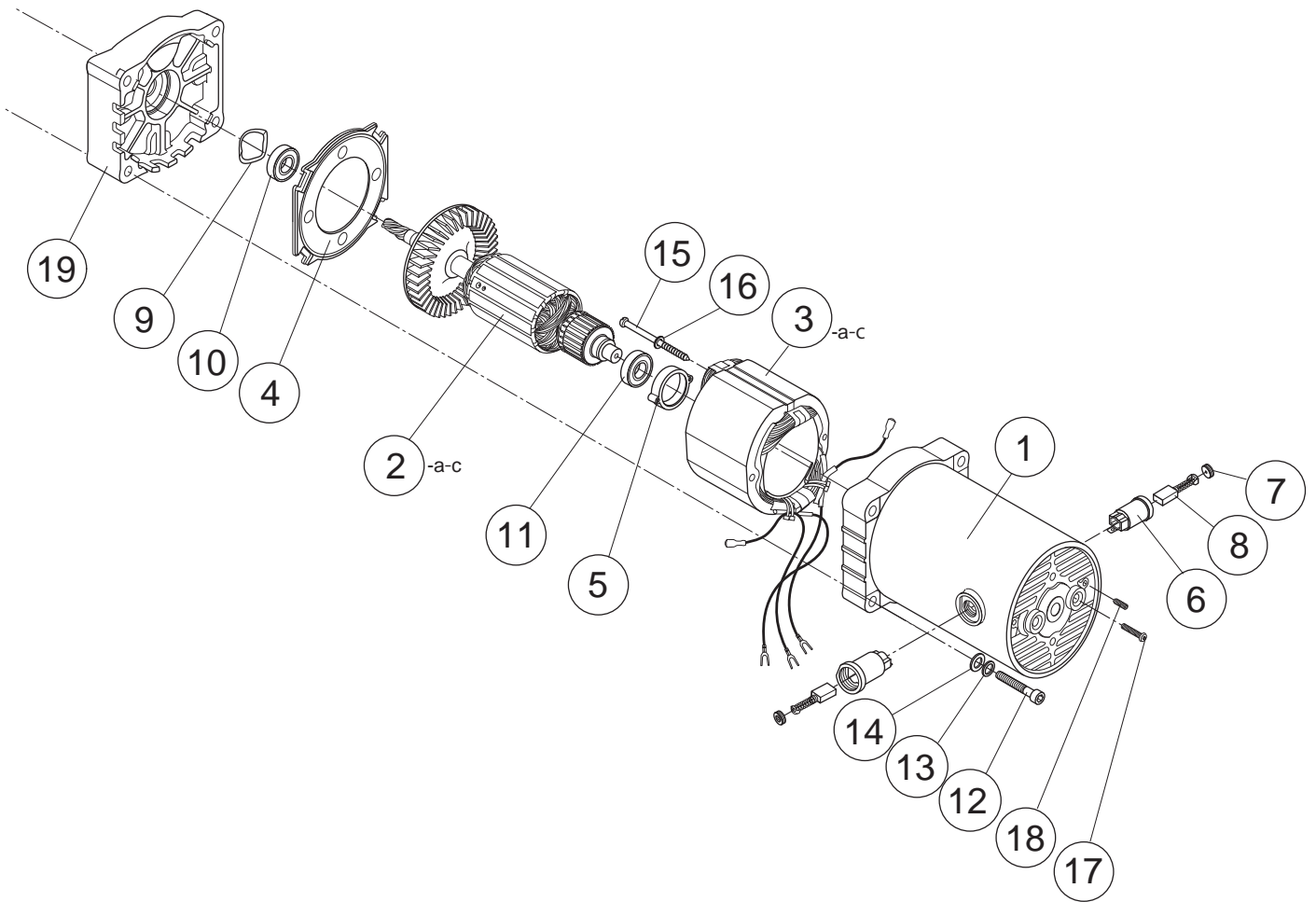
4. Cutter/Reamer



Part No.	Item No.	Part No.	Part Name	Spec	Q'ty	Compatibility with NS25A	Remarks
4.1-a		0MCU1S	Complete cutter assembly (No.2-10)	with MY47 and HY61	1 set	○	with Cutter wheel (135070)
4.1-b		0MCU2S	Complete cutter assembly (No.2-10)	SUS	1 set	○	with Cutter wheel (135077)
4.2		MY45	Cutter frame		1	○	
4.3		MY46	Cutter guide		1	○	
4.4		MY48	Cutter handle		1	○	+MY49
4.5		MY47	Cutter arm		1	○	
4.6-a		135070	Cutter wheel		1	○	see Product List
4.6-b		135071	Cutter wheel	SUS	1	○	see Product List
4.7		HY57	Cutter roller		2	○	
4.8		HY63	Spring		1	○	
4.9		CT07	Cutter pin A		3	○	
4.10		HY61	Cutter frame pin		2	○	
4.21		0MRM1S	Complete reamer assembly	with MY53 and WH12	1 set	○	
4.22		MY50	Reamer body		1	○	
4.23		MY54	Reamer fixing shaft		1	○	
4.24		MY52	Reamer blade		1	○	
4.25		W345	Flat head machine screw	(M4×8)	1	○	
4.26		MY53	Reamer rotation shaft		1	○	
4.27		MY56	Reamer grip		1	○	
4.28		MY55	Reamer fixing shaft collar		1	○	
4.29		WL3A	Roll pin	(3×14)	1	○	
4.30		MY94	Reamer fixing shaft spring		1	○	
4.31		WH12	Wave washer	(WW-12)	1	○	

F25A Series

5. Motor



Part No.	Item No.	Part No.	Part Name	Spec	Q'ty	Compatibility with NS25A	Remarks
5.1		G2M25	Motor case	Black	1	○	
5.2-a		G2M01	Armature assembly	100V	1	○	
5.2-b		G2M02	Armature assembly	115V	1	○	
5.2-c		G2M04	Armature assembly	220V	1	○	
5.3-a		G2M05	Stator assembly	100V	1	○	
5.3-b		G2M06	Stator assembly	115V	1	○	
5.3-c		G2M08	Stator assembly	220V	1	○	
5.4		G2M27	Fan casing		1	○	
5.5		G2M29	Bearing casing		1	○	
5.6		G2M16	Carbon brush holder		2	○	
5.7		G2M17	Carbon brush cap		2	○	
5.8		MYM2	Carbon brush	100-220V	1set	○	2pcs / set
5.9		#0036	Wave washer	(19.5x24.8x3.2)	1	○	for Black Motor only
5.10		S374	Ball Bearing	(6000ZZ)	2	○	
5.11		KM09	Ball Bearing	(629ZZ)	1	○	
5.12		W066	Hex socket head cap screw	(M6×35)	4	○	
5.13		WG6A	Spring washer	(M6, Black)	4	○	
5.14		WI61C	Flat washer	(M6, Black)	4	○	
5.15		#0037	Tapping screw	(Half thread M5x60)	2	○	
5.16		WG05	Spring washer	(M6, Black)	2	○	
5.17		W244	Pan head machine screw	(M4×15, Black)	2	○	
5.18		#0014	Hex socket set screw	(M5×10, Cup Point)	2	○	
5.19		G2M30	Inner cover		1	○	

REX

www.rexind.co.jp

REX INDUSTRIES CO., LTD.

Overseas Sales Dept. (Head Office & Factory):

1-9-3, Hishiyahigashi, Higashi Osaka 578-0948, Japan

Tel.: +81 - (0)72 - 961 - 9820 Fax.: +81 - (0)72 - 961 - 9878

URL <http://www.rexind.co.jp>