

REX

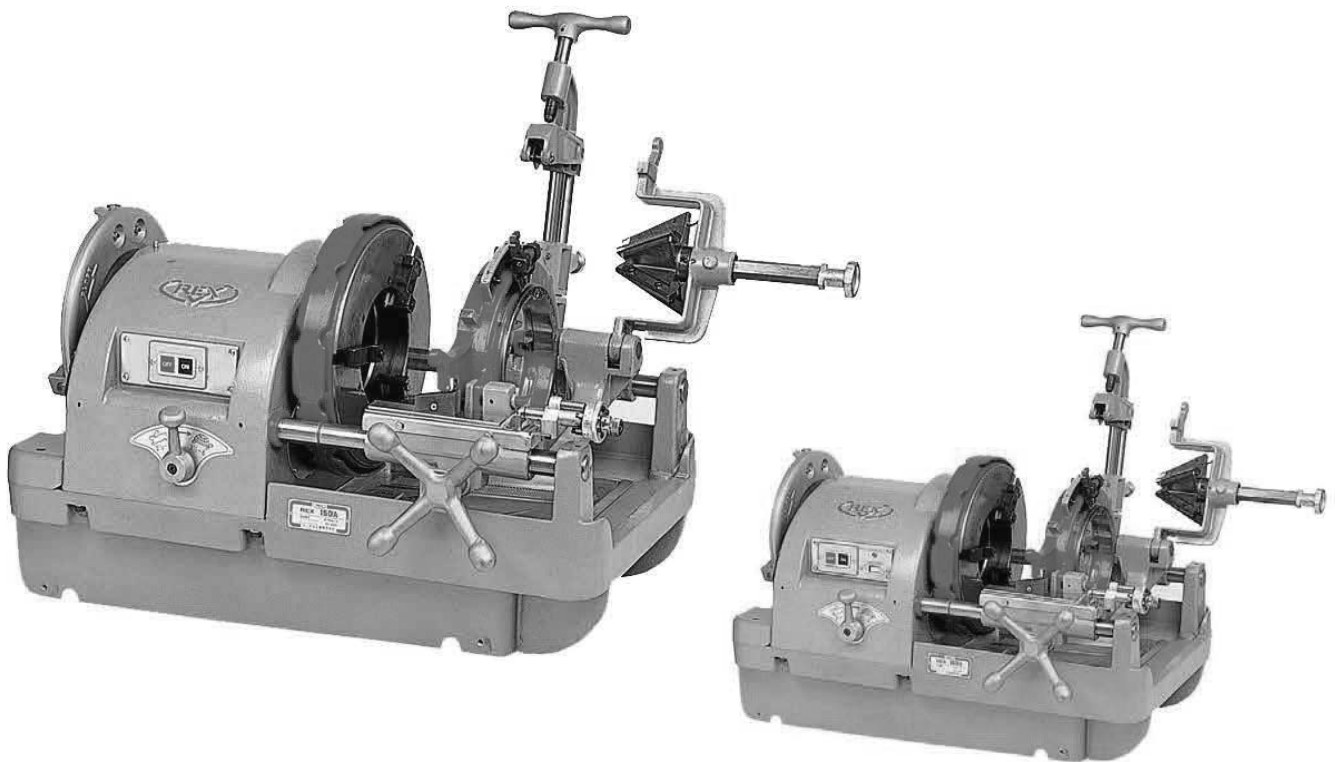
50/60Hz

PIPE THREADING MACHINE

150A

PARTS LIST

As of 1974

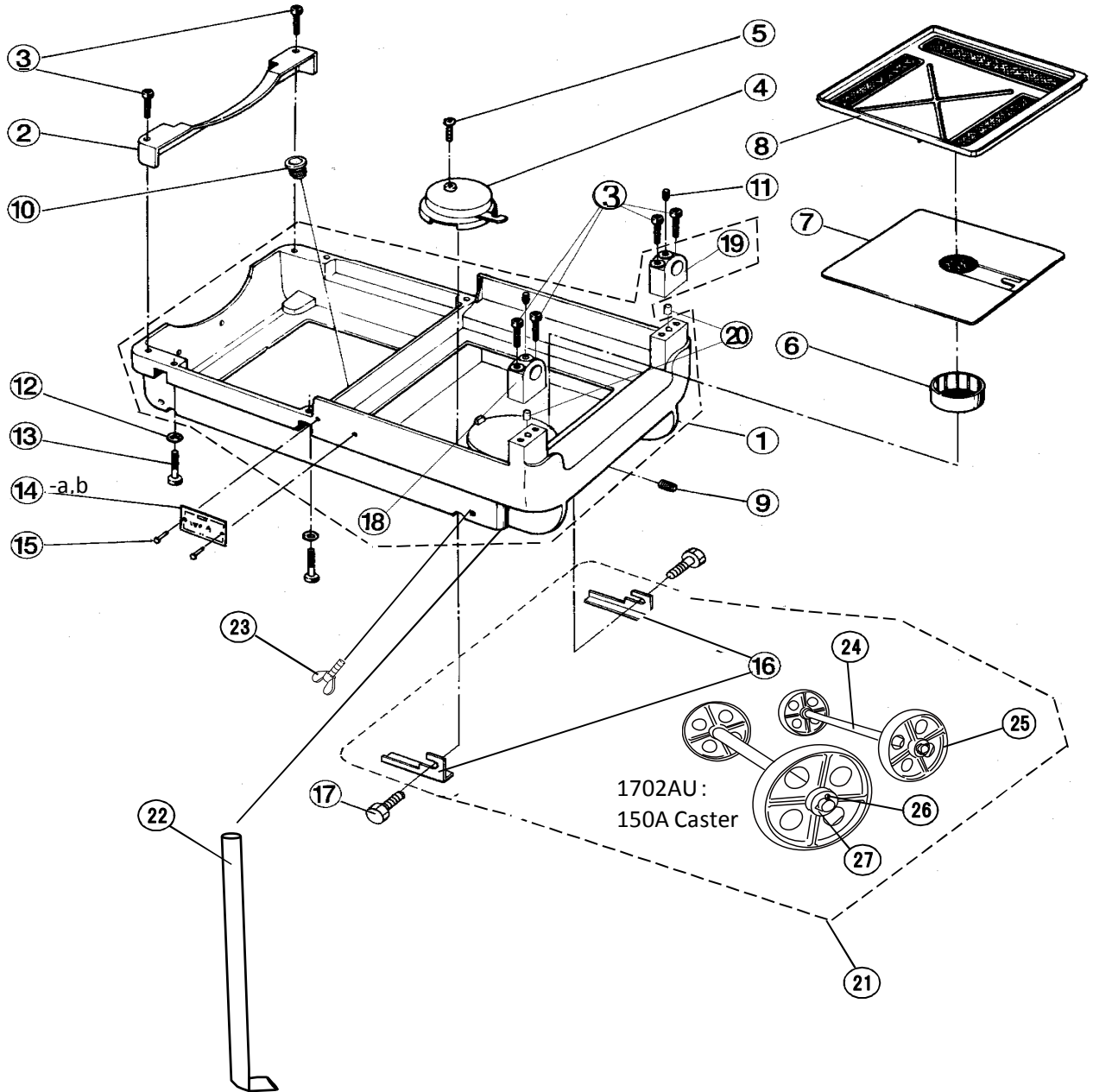


CONTENTS

1. Base
2. Head Stock
3. Main Shaft
4. Motor, Gear case
5. Gear
6. Carriage
7. New Type Profiling
8. Cutter, Reamer

150A

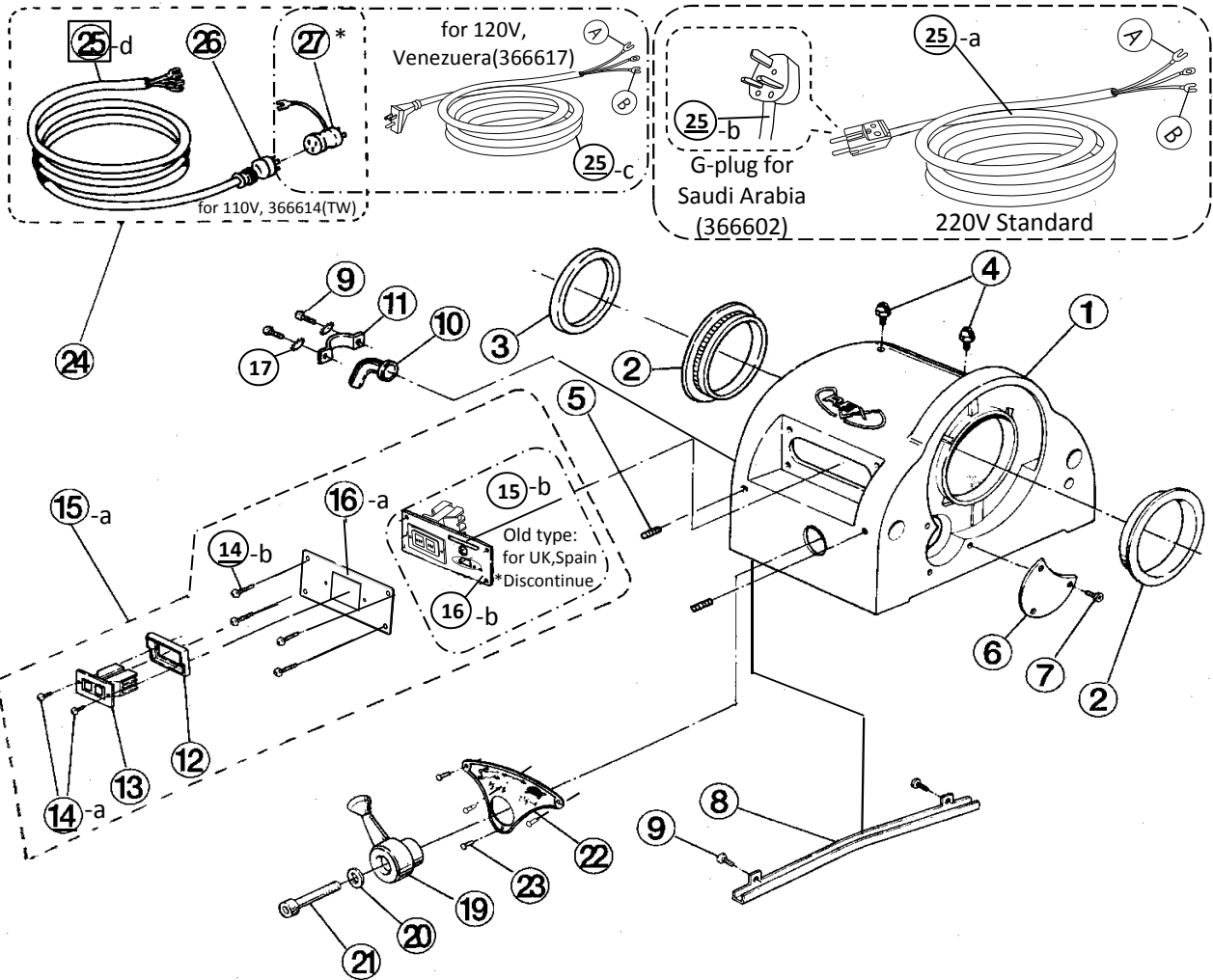
1.Base



Page No.	Item No.	Page Title	Part No.	Part Name	Spec.	Qty	Remarks
1	1	1.Base	A051	Base		1	with Support A/B (No.18-19)
1	2	1.Base	A052	Motor cover		1	
1	3	1.Base	W088	Hex socket head cap screw	M8x65	6	
1	4	1.Base	4047	Strainer		1	
1	5	1.Base	WA55	Tapping screw	M5x8	1	
1	6	1.Base	A055	Oil pot		1	
1	7	1.Base	A054	Tank upper cover		1	
1	8	1.Base	A053	Scrap Receiver		1	
1	9	1.Base	WA46	Drain plug	R 1/2", Black	1	
1	10	1.Base	1095	Suction tube bush		1	
1	11	1.Base	W78B	Hex socket set screw	M8x12 cup end pre-coated	2	with sealing
1	12	1.Base	WG10	Spring washer	10mm	4	
1	13	1.Base	W004	Hex socket head cap screw	M10x40	4	
1	14-a	1.Base	E060	150A Name plate 110-220V (English/BSPT)	2 holes/366500/366602/366614/366616	1	not for sale
1	14-b	1.Base	E061	150A Name plate 110-220V (English/NPT)	2 holes/366617	1	not for sale
1	15	1.Base	WN34	Rivet	#4x5	2	
1	16	1.Base	A063	Wheel shaft support set (right & left)		2 set	option incl. 1702AU
1	17	1.Base	W101	Hex head bolt	M10X30	4	
1	18	1.Base	A070	Support A		1	
1	19	1.Base	A071	Support B		1	
1	20	1.Base	A072	Straight pin for support	12x25	2	
1	21	1.Base	1702AU	Wheel set		1 set	No.16, 24-26;Option
1	22	1.Base	A057	Pipe stand	660mm	4	
1	23	1.Base	-	Wing screw	M10x30	4	
1	24	1.Base	A060	Wheel shaft		2	option incl. 1702AU
1	25	1.Base	A061	Wheel		4	option incl. 1702AU
1	26	1.Base	WN13	Split pin	3x25	4	option incl. 1702AU
1	27	1.Base	WI08	Flat washer	M19X36X26	8	option incl. 1702AU

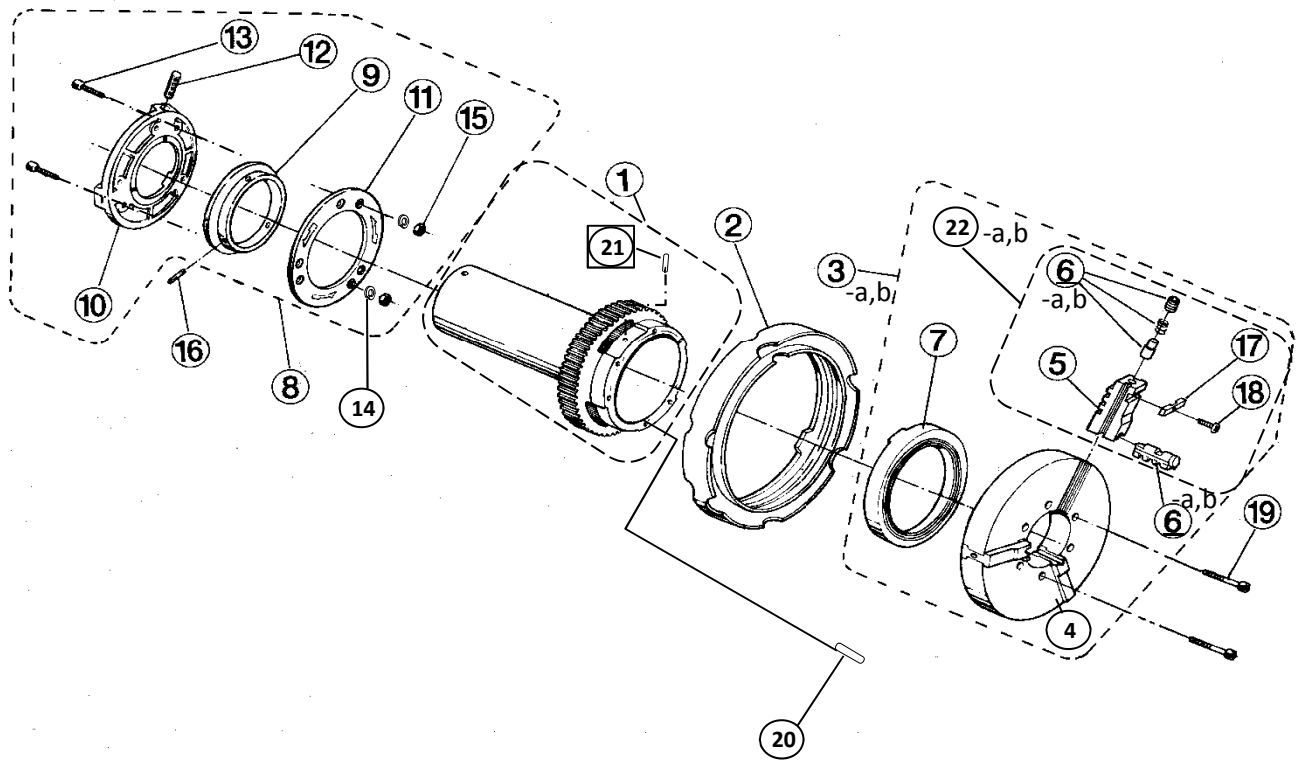
150A

2.Head Stock



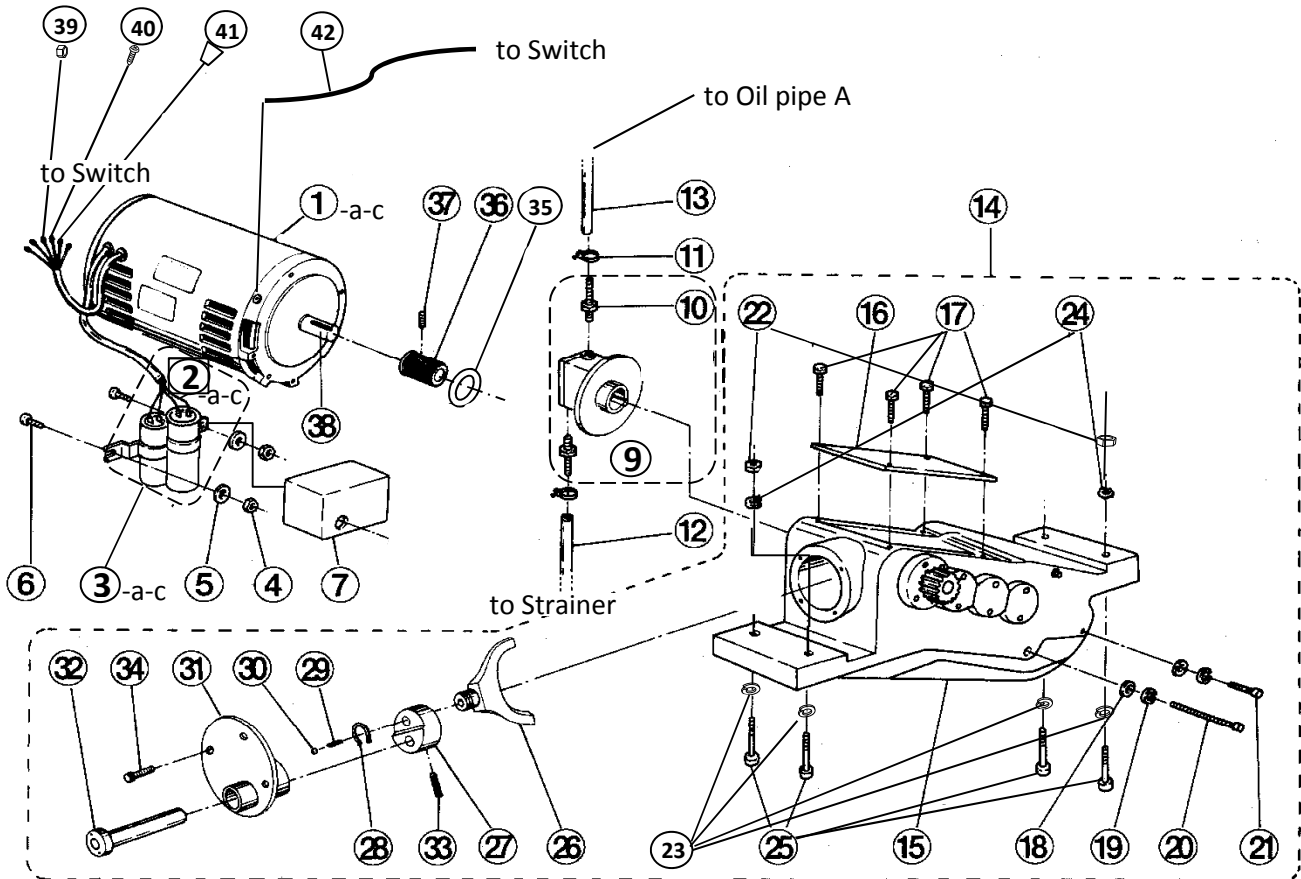
Page No.	Item No.	Page Title	Part No.	Part Name	Spec.	Q'ty	Remarks
2	1	2.Head stock	E001	Head stock		1	
2	2	2.Head stock	E005	Main shaft bearing		2	
2	3	2.Head stock	E008	Thrust Ring		1	
2	4	2.Head stock	J009	Grease Nipple	M6	2	
2	5	2.Head stock	W78B	Hex socket set screw	M8x12 cup point precoated	4	
2	6	2.Head stock	A009	Window cap		1	
2	7	2.Head stock	W241	Pan head machine screw	M4x8	3	
2	8	2.Head stock	A010	Oil drip plate		1	
2	9	2.Head stock	W242	Pan head machine screw	M4x10	4	
2	10	2.Head stock	7021	D5.8 Cord bush		1	
2	11	2.Head stock	7098	Binder	C-15	1	
2	12	2.Head stock	E032	Switch packing		1	
2	13	2.Head stock	N008	Switch	On-Off	1	
2	14-a	2.Head stock	W4A4	Oval Head Machine Screw	M4x12	2	Old No.W34A(M4x10)
2	14-b	2.Head stock	W4A4	Oval Head Machine Screw	M4x12	4	Old No.W34A(M4x10)
2	15-a	2.Head stock	0EKS2S	Switch complete set 110-220V	no shift/No.12,13,14,16-a	1	366500/366602/366614
2	15-b	2.Head stock	0EKS3S	Switch complete set 100/200V	for Spain/England /**discon	1	No.12,13,14,16-b
2	16-a	2.Head stock	A641	Switch plate	0EKS2S(12+13+14+16-a)	1	366500/366602/366614/366617
2	16-b	2.Head stock	E029	Switch plate (for shift switch)	for Spain, UK /**discon	1	0EKS3S/Old type/366616
2	17	2.Head stock	WJ14	External-Internal lock washer	4	2	
2	19	2.Head stock	A303	Speed change lever		1	
2	20	2.Head stock	WG08	Spring washer	8	1	
2	21	2.Head stock	W08C	Hex socket head cap screw	M8x60	1	Old No. W087
2	22-a	2.Head stock	E021	Change position Plate (tortoise & hare)		1	
2	22-b	2.Head stock	E027	Change position Plate (for Ductile cast iron pipe)		1	366616/366617
2	23	2.Head stock	WN34	Rivet	#4x5	4	
2	24	2.Head stock	04CT1S	Cabtyre cord set 100/110V	3 pins / for TW, JPN	1	366614/+No. 25-d, 26, 27
2	25-a	2.Head stock	N122	Cabtyre cord with power plug 120/220V	3.5m	1	366500/366616
2	25-b	2.Head stock	NR96	Cabtyre cord set 220V	G-plug / for Saudi Arabia	1	366602/Old No.N132
2	25-c	2.Head stock	4082	Cabtyre cord 100V	for Venezuela	1	366617/+No.25-d, 26
2	25-d	2.Head stock	E030	Cabtyre cord with power plug 100/110/200V	100A/150A for TW, JPN	1	366614/+No. 24, 26, 27 as a set only
2	26	2.Head stock	E031	Rubber cap 100/110V	WF7515	1	366614/+No. 24, 25-d, 27
2	27	2.Head stock	4081	Earthed adapter 110-115V	for TW,JPN/Venezuela*(Option)	1	366614/+No. 24, 25-d, 26

3.Main Shaft



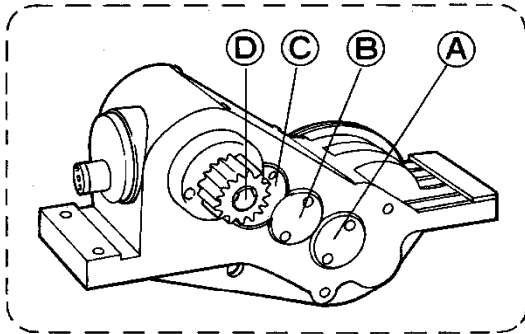
Page No.	Item No.	Page Title	Part No.	Part Name	Spec.	Q'ty	Remarks
3	1	3.Main Shaft	02EJ	Main shaft with main shaft gear / grooved pins		1	with No.21
3	2	3.Main Shaft	E003	Hand wheel		1	
3	3-a	3.Main Shaft	E017	Chuck complete set (RT- RT)		1	366500/366602/366616/366617
3	3-b	3.Main Shaft	E016	Chuck complete set (RT- RS)	for TW , JPN	1	366614
3	4	3.Main Shaft	EH00	Chuck body		1	
3	5	3.Main Shaft	E0CJ	Chuck jaw (RT- RS / RT- RT)		1 set	supplied as E0CJS/E1CJS
3	6-a	3.Main Shaft	A0RT	Chuck jaw insert set (RT type)		1 set	
3	6-b	3.Main Shaft	A0RS	Chuck jaw insert set (RS type)		1 set	
3	7	3.Main Shaft	ES00	Chuck scroll		1	
3	8	3.Main Shaft	E006	Rear chuck complete set		1	
3	9	3.Main Shaft	E0S3	Rear scroll		1	
3	10	3.Main Shaft	E0S1	Rear chuck receptacle		1	
3	11	3.Main Shaft	E0S2	Rear chuck cover		1	
3	12	3.Main Shaft	E0SS	Rear chuck jaw		3	per set
3	13	3.Main Shaft	W063	Hex socket head cap screw	M6x20	6	
3	14	3.Main Shaft	WG06	Spring washer	6	6	
3	15	3.Main Shaft	WC06	Nut	M6	6	
3	16	3.Main Shaft	WL61	Roll Pin	6x14	3	
3	17	3.Main Shaft	E849	Collar		1	N/A for EWCJ
3	18	3.Main Shaft	W358	Cross-recessed countersunk head screw	M6X10	1	N/A for EWCJ
3	19	3.Main Shaft	W07C	Hex socket head cap screw	M7x59	6	
3	20	3.Main Shaft	WN08	Straight pin	8X20	1	
3	21	3.Main Shaft	WM64	Grooved pin	C6X14.5	3	supplied with No. 2
3	22-a	3.Main Shaft	E1CJS	Chuck jaw set (RT-RT)		1 set	with A0RT
3	22-b	3.Main Shaft	E0CJS	Chuck jaw set (RT-RS)		1 set	with A0RS

4. Motor, Gear

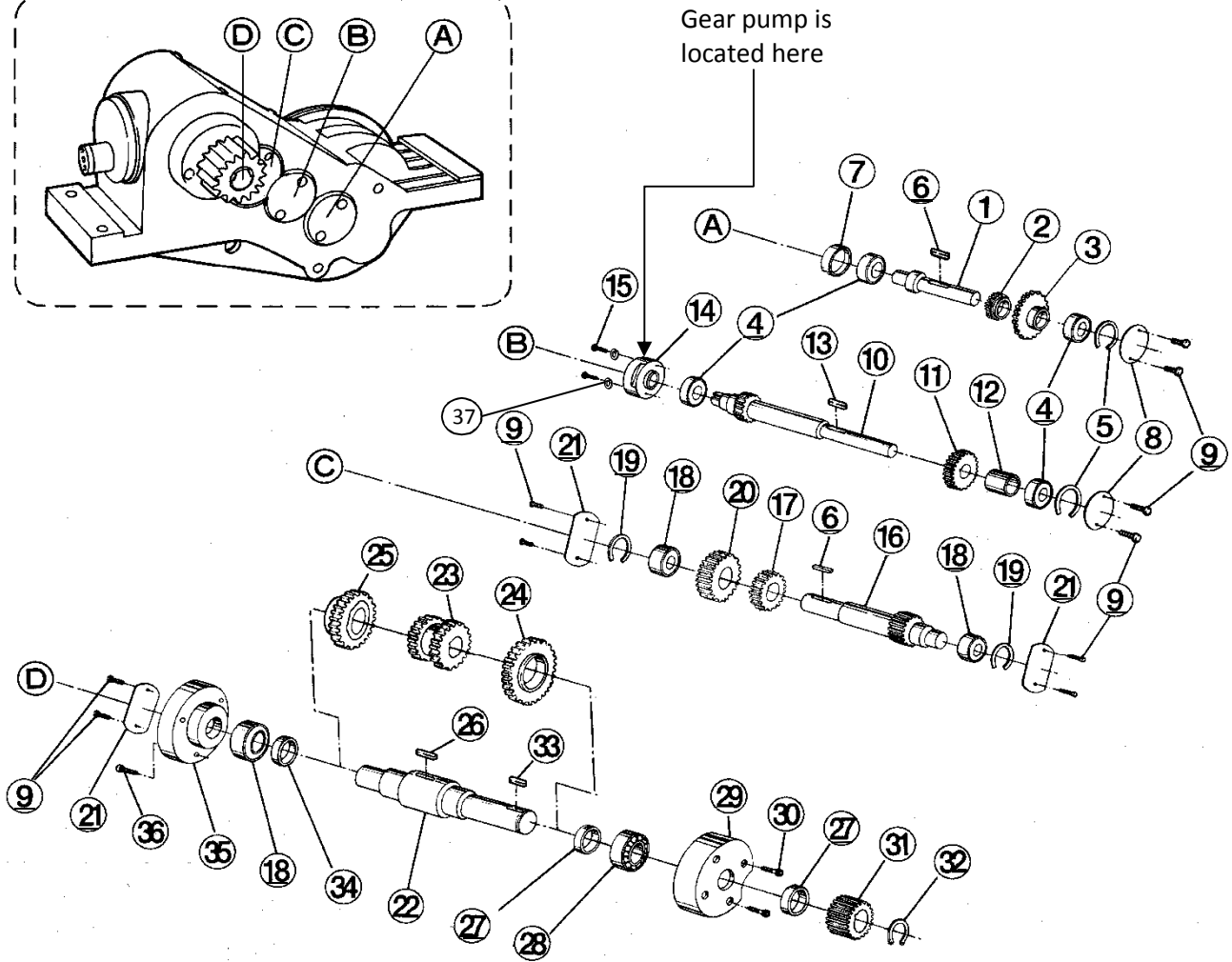


Page No.	Item No.	Page Title	Part No.	Part Name	Spec.	Q'ty	Remarks
4	1-a	4.Motor, Gear case	A571	Condenser motor 750w 100/200V	for TW, JPN	1	366614
4	1-b	4.Motor, Gear case	A572	Condenser motor 750w 220V		1	366500/366602/366616
4	1-c	4.Motor, Gear case	A574	Condenser motor 750w 120V	for Venezuela, WH	1	366617/3662A4
4	2	4.Motor, Gear case	-	Lead wire set		1 set	2-a-c / as per set
4	2-a	4.Motor, Gear case	A548	Lead wire		1	not for sale
4	2-b	4.Motor, Gear case	ZL20	Terminal connector	TMEDN-630820	2	not for sale
4	2-c	4.Motor, Gear case	ZN11	Vinyl wire	Black / 2.0mm	1	not for sale
4	3-a	4.Motor, Gear case	A575	Condenser Set (starter/drive) 100/200V	350micF125VAC/60micF220VAC	1	for A571 (with 2-a-c:lead wire set)
4	3-b	4.Motor, Gear case	A550	Condenser Set (starter/drive) 220V	310micF140VAC/35micF230VAC	1	for A572 (with 2-a-c:lead wire set)
4	3-c	4.Motor, Gear case	A549	Condenser Set (starter/drive) 120V	350micF125VAC/30micF230VAC	1	for A574 (with 2-a-c:lead wire set)
4	4	4.Motor, Gear case	WC05	Nut	M5	2	
4	5	4.Motor, Gear case	WI52	Flat washer	5	2	
4	6	4.Motor, Gear case	W359	Oval Socket Head Cap Screw	M5x15	2	
4	7	4.Motor, Gear case	A336	Condenser cover		1	
4	9	4.Motor, Gear case	A551	Gear pump (normal)	with 1035 Joint (No.10)	1	
4	10	4.Motor, Gear case	1035	Joint		2	
4	11	4.Motor, Gear case	ZJ50	Pipe band	10mm	2	
4	12	4.Motor, Gear case	0410-580	Oil intake line	580mm red	1	
4	13	4.Motor, Gear case	0410-350	Oil feed line tube	350mm red	1	
4	14	4.Motor, Gear case	0EGS1S	Gear complete set		1	
4	15	4.Motor, Gear case	A301	Gear case		1	
4	16	4.Motor, Gear case	A333	Upper cover		1	
4	17	4.Motor, Gear case	W161	Hex head bolt	M6x10	4	
4	18	4.Motor, Gear case	WI81	Flat washer	8	3	
4	19	4.Motor, Gear case	WG08	Spring washer	8	3	
4	20	4.Motor, Gear case	W089	Hex socket head cap screw	M8x85	2	
4	21	4.Motor, Gear case	W066	Hex socket head cap screw	M6x35	1	
4	22	4.Motor, Gear case	WC10	Nut	M10	2	
4	23	4.Motor, Gear case	WG10	Spring washer	10	4	
4	24	4.Motor, Gear case	WJ10	External-Internal lock washer	10	2	
4	25	4.Motor, Gear case	W00A	Hex socket head cap screw	M10x65	4	
4	26	4.Motor, Gear case	A306	Gear shift fork		1	
4	27	4.Motor, Gear case	A305	Change lever		1	
4	28	4.Motor, Gear case	WW15	Snap ring	external 15	1	
4	29	4.Motor, Gear case	5176	Shifter Spring		1	
4	30	4.Motor, Gear case	WQ08	Steel ball	8	1	
4	31	4.Motor, Gear case	A302	Front cover		1	
4	32	4.Motor, Gear case	A304	Change lever shaft		1	
4	33	4.Motor, Gear case	WL55	Roll pin	5x25	1	
4	34	4.Motor, Gear case	W062	Hex socket head cap screw	M6x16	4	
4	35	4.Motor, Gear case	A193	Oil Seal	AC4255	1	
4	36	4.Motor, Gear case	A344	Motor gear		1	
4	37	4.Motor, Gear case	W78A	Hex socket set screw	M8x8 cup point pre-coated	1	
4	38	4.Motor, Gear case	-	Motor Key	6x6x32	1	
4	39	4.Motor, Gear case	WC05	Nut	M5	4	
4	40	4.Motor, Gear case	W252	Pan head machine screw	M5X10	4	
4	41	4.Motor, Gear case	ZN33	Transparent Insulation Tube	12	2	
4	42	4.Motor, Gear case	ZN16	Ground cord	green / 500mm	1	to Switch

5. Gear Case

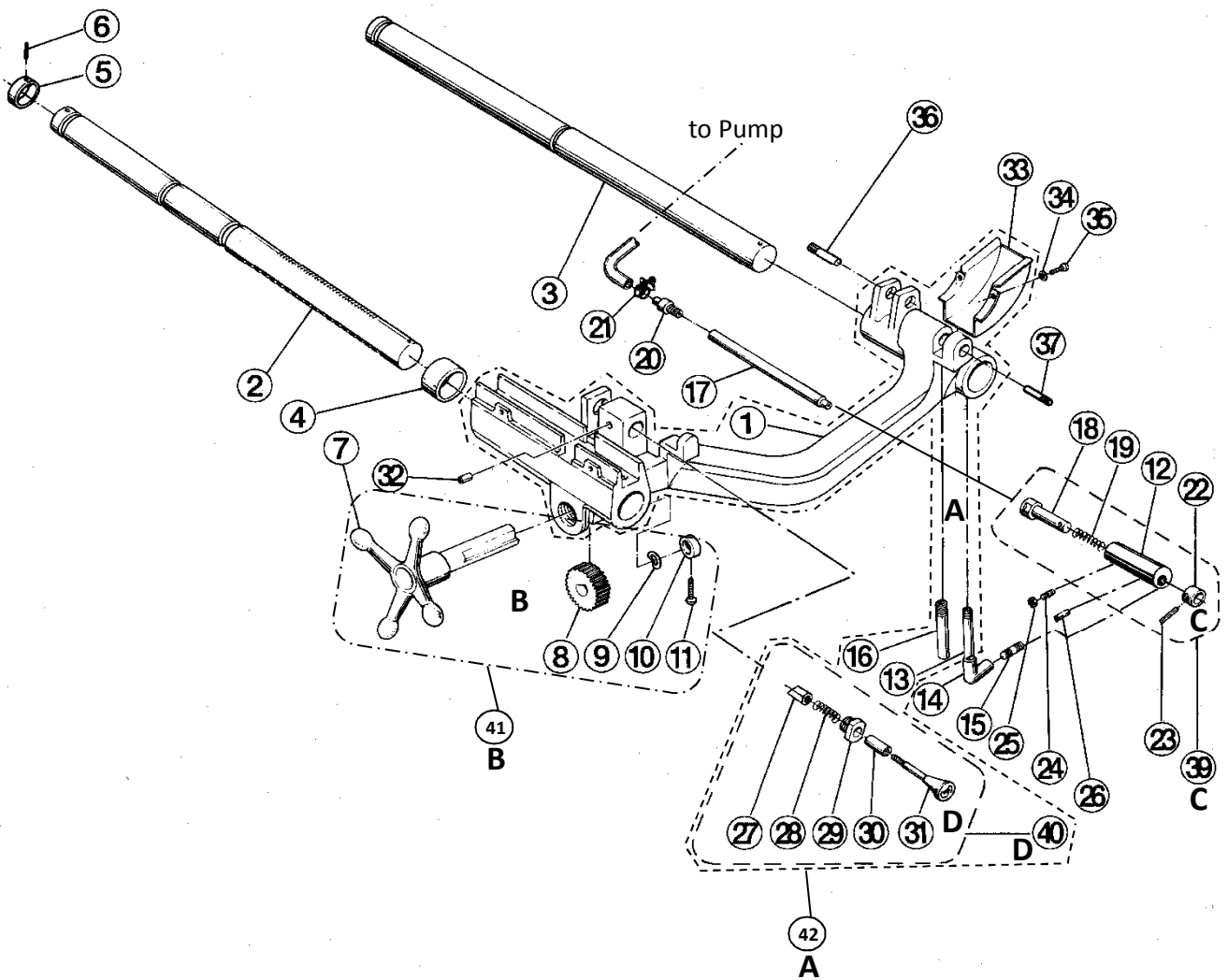


Gear pump is located here



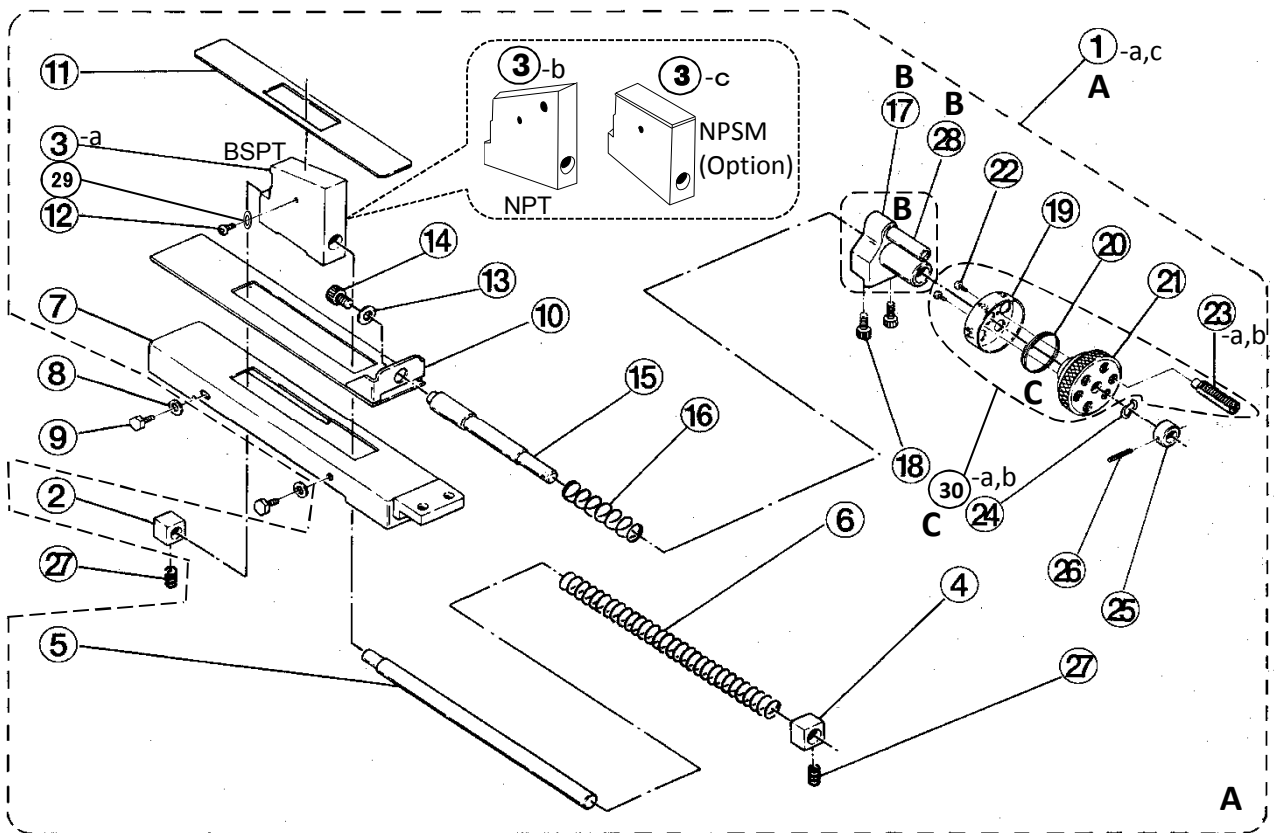
Page No.	Item No.	Page Title	Part No.	Part Name	Spec.	Q'ty	Remarks
5	1	5.Gear	A315	A shaft		1	
5	2	5.Gear	E333	A shaft gear 1	E333 + E334 / per set	1	Old No.:E344⇒E331
5	3	5.Gear	E334	A shaft gear 2 with collar	E333 + E334 / per set	1	Old No.:A316⇒E332
5	4	5.Gear	1301	Bearing	6003LLU	4	
5	5	5.Gear	WXA4	Circlip	AR33	2	
5	6	5.Gear	WR560	Key	5x5x22	2	
5	7	5.Gear	A317	A shaft bearing collar		1	
5	8	5.Gear	A332	Iron plate cover	55	2	
5	9	5.Gear	W161	Hex head bolt	M6x10	10	
5	10	5.Gear	A318	B shaft		1	
5	11	5.Gear	E312	B shaft gear		1	
5	12	5.Gear	A319	B shaft collar		1	
5	13	5.Gear	WR53	Key	5x5x13	1	
5	14	5.Gear	A320	B shaft stop cover		1	
5	15	5.Gear	W067	Hex socket head cap screw	M6x40	2	
5	16	5.Gear	E321	C shaft		1	
5	17	5.Gear	E331	C shaft gear 1 with collar	E331 + E332 /per set	1	Old No.:A322⇒E333
5	18	5.Gear	A191	Bearing	6004LLU	3	
5	19	5.Gear	WXA6	Circlip	AR40	2	
5	20	5.Gear	E332	C shaft gear 2	E331 + E332 /per set	1	Old No.:E313⇒E334
5	21	5.Gear	A331	Iron plate cover	62	3	
5	22	5.Gear	A323	D shaft		1	
5	23	5.Gear	A309	Clutch		1	
5	24	5.Gear	E307	Clutch gear L with clutch metal L		1	
5	25	5.Gear	E308	Clutch gear S with clutch metal S		1	
5	26	5.Gear	WT03	Double-Ended Round Key	10x8x50	1	
5	27	5.Gear	A324	D shaft collar L		2	
5	28	5.Gear	A192	Bearing	6205LLU	1	
5	29	5.Gear	A327	D shaft stop cover		1	
5	30	5.Gear	W06B	Hex socket head cap screw	M6x25 precoated	4	
5	31	5.Gear	A314	D shaft gear		1	
5	32	5.Gear	WW25	Snap ring	external 25	1	
5	33	5.Gear	WR74	Key	7x7x28	1	
5	34	5.Gear	A325	D shaft collar S		1	
5	35	5.Gear	A328	D shaft blind cover		1	
5	36	5.Gear	W062	Hex socket head cap screw	M6x16	3	
5	37	5.Gear	WG06	Spring washer	6	2	

6.Carriage



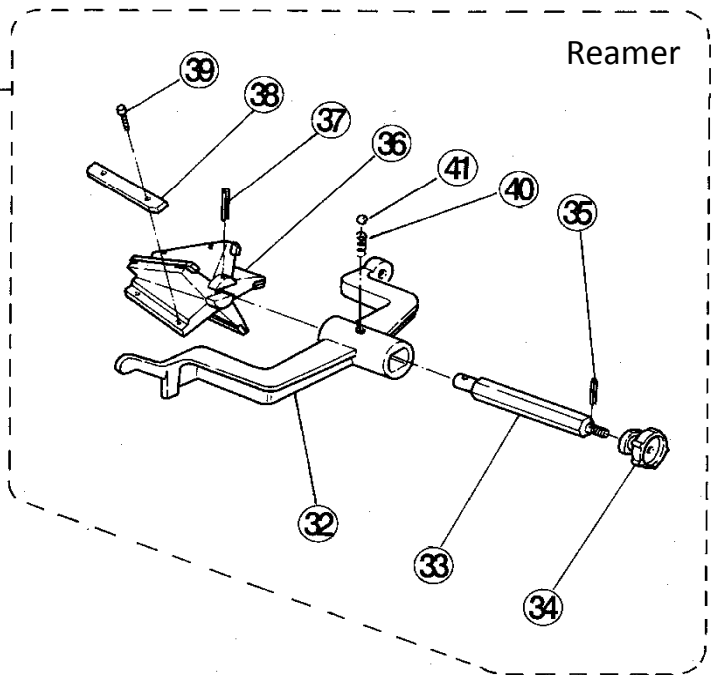
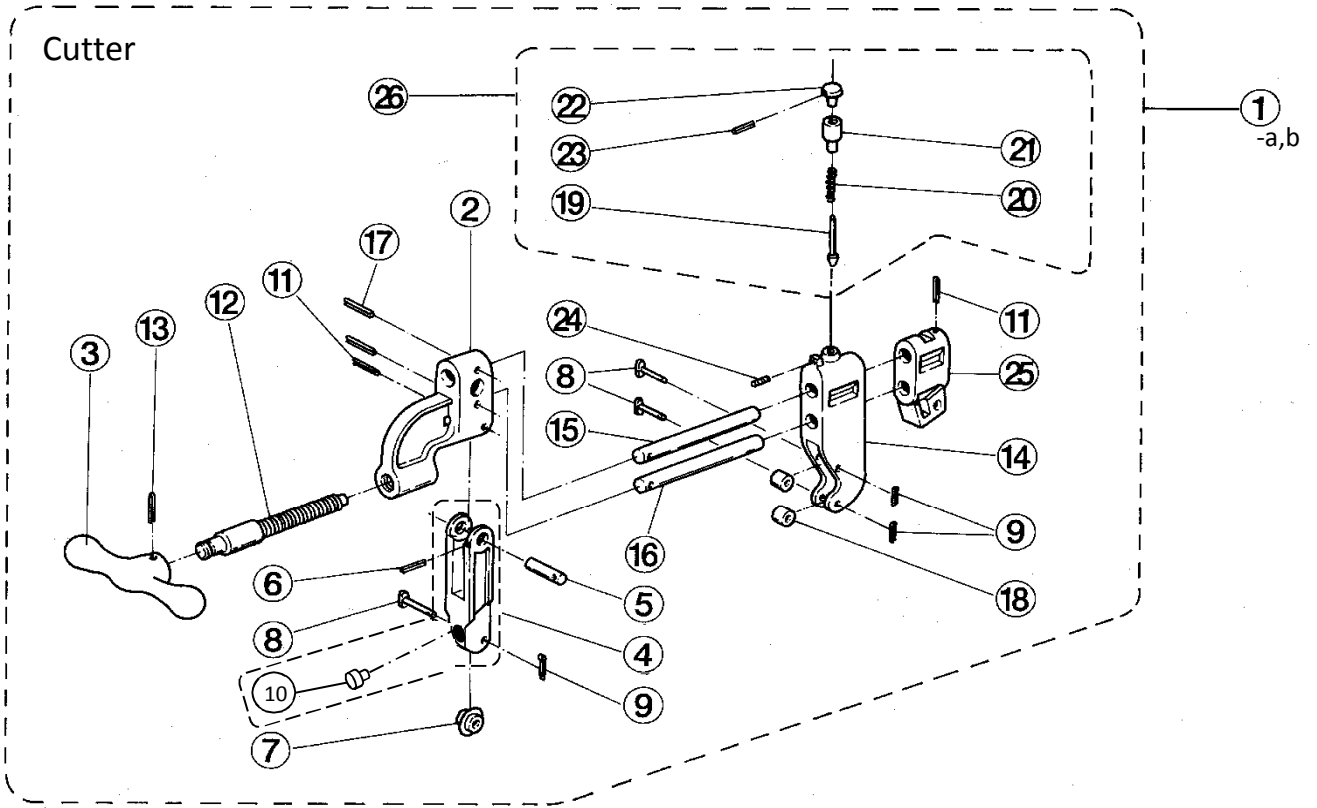
Page No.	Item No.	Page Title	Part No.	Part Name	Spec.	Q'ty	Remarks
6	1	6.Carriage	A101	Carriage		1	A
6	2	6.Carriage	A526	Carriage support bar A		1	
6	3	6.Carriage	A527	Carriage support bar B		1	
6	4	6.Carriage	A520	Carriage support collar		1	
6	5	6.Carriage	8032	Carriage stop collar		1	
6	6	6.Carriage	WL54	Roll pin	5x20	1	
6	7	6.Carriage	A517	Carriage handle		1	B
6	8	6.Carriage	A515	Carriage feed gear		1	B
6	9	6.Carriage	WH20	Wave washer	20	1	B
6	10	6.Carriage	9018	Feed gear stop ring		1	B
6	11	6.Carriage	W256	Round head machine screw	M5x30	1	B
6	12	6.Carriage	7007	Oil pipe connector		1	C
6	13	6.Carriage	A112	Oil pipe B		1	A
6	14	6.Carriage	A064	Elbow	1/4"	1	
6	15	6.Carriage	A073	Nipple	1/4"	1	
6	16	6.Carriage	A138	Drain pipe		1	A
6	17	6.Carriage	A111	Oil Pipe A		1	
6	18	6.Carriage	7017	Connector shaft		1	C
6	19	6.Carriage	7220	Connector spring		1	
6	20	6.Carriage	1035	Joint		1	
6	21	6.Carriage	ZJ50	Pipe band	10mm	1	
6	22	6.Carriage	7018	Oil adjustment knob		1	C
6	23	6.Carriage	WL37	Roll pin	3x25	1	C
6	24	6.Carriage	W665	Hex socket set screw	M6x15 Cone point	1	
6	25	6.Carriage	WD06	Jam nut	M6	1	
6	26	6.Carriage	WL85	Roll pin	8x25	1	
6	27	6.Carriage	A109	Die-head stop pin		1	D(A)
6	28	6.Carriage	A115	Spring		1	D(A)
6	29	6.Carriage	A110	Die-head stop pin cover		1	D(A)
6	30	6.Carriage	A119	Knob pin bush		1	D(A)
6	31	6.Carriage	A117	Die-head lock knob		1	D(A)
6	32	6.Carriage	WL6A	Roll pin	6x10	1	
6	33	6.Carriage	E121	Oil cover		1	A
6	34	6.Carriage	WG06	Spring washer	6	2	
6	35	6.Carriage	W261	Pan head machine screw	M6x10	2	
6	36	6.Carriage	A209	Cutter arm stop pin		1	
6	37	6.Carriage	A254	Reamer arm stop pin		1	
6	39	6.Carriage	0EOJ1S	Oil pipe connector set		1 set	C: No.12,18,19,22
6	40	6.Carriage	03EP	Die head lock knob set		1 set	D: No.27-31
6	41	6.Carriage	-	Carriage handle with feed gear		1 set	B: No.7-11
6	42	6.Carriage	0EOD1S	Carriage set	366500	1 set	A: No.1,13-16,23-26,33,40(D)

7. New Type Profiling



Page No.	Item No.	Page Title	Part No.	Part Name	Spec.	Q'ty	Remarks
7	1-a	7.Profiling	0ENA3S	Profiling board complete set BSPT	366500/366602/366614	1 set	No. 2-7,10-26,28-29
7	1-b	7.Profiling	0ENA2S	Profiling board complete set NPT	(for Venezuela)/366616/366617	1 set	No. 2-7,10-26,28-29
7	1-c	7.Profiling	OENA6S	Profiling board complete set NPSM	(for WH)	1	Option / No. 2-29
7	2	7.Profiling	T032	Spring support shaft holder A		1	
7	3-a	7.Profiling	A102	Profiling broad BSPT		1	
7	3-b	7.Profiling	E708	Profiling broad NPT	(for Venezuela)	1	366616/366617
7	3-c	7.Profiling	A129	Profiling broad NPSM	(for WH)	1	Option
7	4	7.Profiling	T033	Spring support shaft B		1	
7	5	7.Profiling	E117	Spring support shaft		1	
7	6	7.Profiling	A114	Spring		1	
7	7	7.Profiling	E122	Profiling cover A		1	
7	8	7.Profiling	WI62	Flat washer	6	2	
7	9	7.Profiling	W161	Hex head bolt	M6x10	2	
7	10	7.Profiling	E123	Profiling cover B		1	
7	11	7.Profiling	E124	Profiling cover C		1	
7	12	7.Profiling	W251	Pan head machine screw	M5x8	1	
7	13	7.Profiling	WI81	Flat washer	8	1	
7	14	7.Profiling	W08T	Hex socket head cap screw	M8x12	1	
7	15	7.Profiling	E125	Size Adjustment shaft		1	
7	16	7.Profiling	E128	Spring		1	
7	17	7.Profiling	E126	Size Adjustment shaft holder set with size stopper pin		1	B: supplied with No. 28
7	18	7.Profiling	W061	Hex socket head cap screw	M6x12	2	
7	19	7.Profiling	E130	Size plate cover EX	BSPT / NPT / NPSM	1	
7	20	7.Profiling	J151	Size stopper spring		1	
7	21	7.Profiling	J125	Size plate	BSPT / NPT / NPSM	1	
7	22	7.Profiling	W231	Pan head machine screw	M3x5	2	
7	23-a-1	7.Profiling	E133	Size stopper screw EX	BSPT 2.1/2"	1	for BSPT set
7	23-a-2	7.Profiling	E131	Size stopper screw EX	BSPT 3"	1	
7	23-a-3	7.Profiling	E134	Size stopper screw EX	BSPT 3.1/2"	1	
7	23-a,b-4	7.Profiling	J233	Size stopper screw EX	BSPT 4" / NPT(NPSM) 3"	1	for NPT(NPSM) set
7	23-a,b-5	7.Profiling	J235	Size stopper screw EX	BSPT 5" / NPT(NPSM) 5"	1	
7	23-a-6	7.Profiling	J231	Size stopper screw EX	BSPT 6"	1	
7	23-b-1	7.Profiling	J234	Size stopper screw NPT / NPSM	NPT(NPSM) 2.1/2"	1	
7	23-b-2	7.Profiling	J236	Size stopper screw NPT / NPSM	NPT(NPSM) 3.1/2"	1	
7	23-b-3	7.Profiling	J232	Size stopper screw NPT / NPSM	NPT(NPSM) 4"	1	
7	23-b-6	7.Profiling	J230	Size stopper screw BSPT / NPT / NPSM	BSPT 5", 6" / NPT(NPSM) 6"	1	
7	24	7.Profiling	WH12	Wave washer	12	1	
7	25	7.Profiling	J126	Stop collar		1	
7	26	7.Profiling	WL46	Roll pin	4x20	1	
7	27	7.Profiling	E140	Profiling broad spring		2	
7	28	7.Profiling	E127	Size stoper pin		1	B: supplied with No. 17
7	29	7.Profiling	WI53	Flat washer	5X16X1.6	1	
7	30-a	7.Profiling	0ENA3S	Profiling board size dial set BSPT		1 set	C: No. 19-23a-1-6
7	30-b	7.Profiling	0ENA2S	Profiling board size dial set NPT / NPSM		1 set	C: No. 19-23b-1-6

8. Cutter, Reamer



Page No.	Item No.	Page Title	Part No.	Part Name	Spec.	Qty	Remarks
8	1-a	8.Cutter, Reamer	0ECU1S	Cutter Complete Set		1	366500/366602/366616/366617
8	1-b	8.Cutter, Reamer	0ECU2S	Cutter Complete Set	SUS/TW	1	366614
8	2	8.Cutter, Reamer	E201	Cutter Flame		1	
8	3	8.Cutter, Reamer	E205	Cutter Handle		1	
8	4	8.Cutter, Reamer	E202	Cutter Guide A	with E210 Guide A stop pin	1	as per set
8	5	8.Cutter, Reamer	E209	Guide A Pin		1	
8	6	8.Cutter, Reamer	WL48	Roll Pin	4x30	1	
8	7	8.Cutter, Reamer	135076	Cutter Wheel		1	see product list
8	8	8.Cutter, Reamer	5079	Cutter Roll Pin		3	
8	9	8.Cutter, Reamer	WN12	Split pin	#2.3x15	3	
8	10	8.Cutter, Reamer	E210	Guide A stop pin	with E202 Cutter Guide A	1	as per set
8	11	8.Cutter, Reamer	WL64	Roll Pin	6x20	2	
8	12	8.Cutter, Reamer	E208	Feed Screw		1	
8	13	8.Cutter, Reamer	WL68	Roll Pin	6x35	1	
8	14	8.Cutter, Reamer	E203	Cutter Guide B		1	
8	15	8.Cutter, Reamer	E206	Cutter Support Bar A		1	
8	16	8.Cutter, Reamer	E207	Cutter Support Bar B		1	
8	17	8.Cutter, Reamer	WL67	Roll Pin	6x32	2	
8	18	8.Cutter, Reamer	5074	Cutter Roller		2	
8	19	8.Cutter, Reamer	E215	Cutter Notch		1	
8	20	8.Cutter, Reamer	7220	Notch Sping		1	
8	21	8.Cutter, Reamer	E216	Notch Holder		1	
8	22	8.Cutter, Reamer	E217	Notch Knob		1	
8	23	8.Cutter, Reamer	WL39	Roll Pin	3x35	1	
8	24	8.Cutter, Reamer	W68A	Hex Socket Set Screw	M8x14 Cone point precoated	1	Old No.W681(M8x8)
8	25	8.Cutter, Reamer	E204	Cutter Arm		1	
8	26	8.Cutter, Reamer	02EE	Cutter notch set		1	No. 19-23
8	31	8.Cutter, Reamer	0ERM1S	Reamer Complete Set	Standard	1	
8	32	8.Cutter, Reamer	A251	Reamer Arm		1	
8	33	8.Cutter, Reamer	A253	Reamer Shaft		1	
8	34	8.Cutter, Reamer	1094	Reamer Knob		1	
8	35	8.Cutter, Reamer	WL41	Roll Pin	4x10	1	
8	36	8.Cutter, Reamer	E255	Reamer Cone		1	without No. 38-39
8	37	8.Cutter, Reamer	WL89	Roll Pin	8x55	1	
8	38	8.Cutter, Reamer	E256	Reamer Blade		5	per pc.
8	39	8.Cutter, Reamer	W062	Hex socket head cap screw	M6x16	10	
8	40	8.Cutter, Reamer	5096	Spring		1	
8	41	8.Cutter, Reamer	WQ08	Steel Ball		1	

REX

www.rexind.co.jp

REX INDUSTRIES CO., LTD.

Overseas Sales Section & Factory :

1-9-3, Hishiya-Higashi, Higashi-Osaka 578-0948 Japan

Tel.:+81-(0)72-961-9820 Fax.:+81-(0)72-961-9878

URL www.rexind.co.jp

Specifications, colour, etc. may be changed without prior notification.

150A-PL-E1
150A
2012R 0000