

ROLL THREAD HEADS

ROLL THREAD HEADS

For sale in Japan only

10A - 50A ($\frac{3}{8}$ " - 2")

Can be mounted on REX pipe machine series.



50A

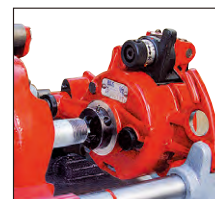
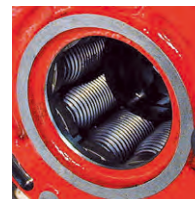


20A

Cutter Guide for Roll Thread Head

Model
Cutter Guide 40A
Cutter Guide 50A
Cutter Guide 80A
Cutter Guide 100A

When mounting the roll thread head, be sure to change the cutter guide.



SRH-15A

Compatibility Table

Model	Size BSPT	Size			
		S40A	F50A	F80A	N100A
SRH-10A	10A ($\frac{3}{8}$ "	●	●	●	◎
SRH-15A	15A ($\frac{1}{2}$ "	●	●	●	◎
SRH-20A	20A ($\frac{3}{4}$ "	●	●	●	◎
SRH-25A	25A (1"	-	●*	●	●
SRH-32A	32A (1 $\frac{1}{4}$ "	-	-	●	●
SRH-40A	40A (1 $\frac{1}{2}$ "	-	-	●	●
SRH-50A	50A (2"	-	-	●*	●

◎ : OK ● : Option Required

* : Double Chucking Required

Roll Thread Sealant ZT



Genuine REX Sealant - Getting the best performance from Roll Threads.

Applicable Pipes: Water mains, Hot water pipes, Standpipes (for firefighting), Steam piping.

Product	Quantity (g)
Roll Thread Sealant ZT	500g (with brush)

Lining Blades

15A - 50A ($\frac{1}{2}$ " - 2")

Use: Used to remove external coatings by attaching blade to the scraper on the roll thread head.



Lining Blade

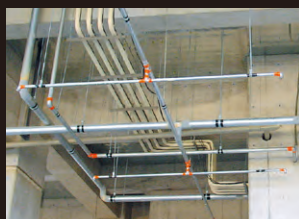


Model	Size	Appropriate head
Lining Blade 15A	15A ($\frac{1}{2}$ "	SRH-15A
Lining Blade 20A	20A ($\frac{3}{4}$ "	SRH-20A
Lining Blade 25A	25A (1"	SRH-25A
Lining Blade 32A	32A (1 $\frac{1}{4}$ "	SRH-32A
Lining Blade 40A	40A (1 $\frac{1}{2}$ "	SRH-40A
Lining Blade 50A	50A (2"	SRH-50A

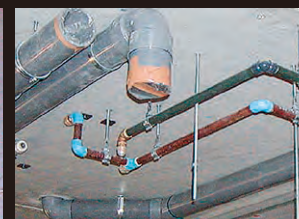
Examples of Roll Threads



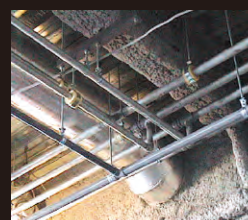
Fire Sprinkler Systems



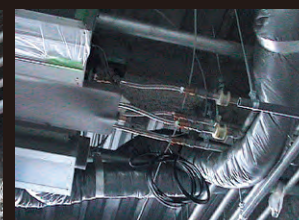
Water Supply



Gas Supply



Air Conditioning



Five great features of roll threads

1. Environmentally friendly

Chips are greatly reduced. (Figs.1&2 and Table 1)
(No chips are produced when processing roll threads;only when correcting out-of-round pipe.)

Comparison of amount of chips (internal data)

Code No.	Capacity ratio	Mass ratio
Cut thread : Roll thread	100 : 9	100 : 13

Table 1

2. Savings in cost

- Increased strength of the thread joint means pipe thickness can be reduced by one size.
- Roller wear : 1/10 that of cutting
- Oil consumption : 1/2 that of cutting

3. Difficult to break

- Roll threads retain the 'grain' of the pipe without interruption. (Fig. 3)
- Increased durability - wall thickness is assured with roll threads. (Fig. 4)
- Thread processing creates threads that are even harder than the original pipe itself. (Fig. 5)
- With strength equivalent to welding, both efficiency and earthquake-proof characteristics are increased.

4. Rust resistant

- Threads display increased rust resistance as the coating on the pipe surface remains. (Fig. 6)

5. Leak resistant

- With roll threads, the height of the thread is uniform, resulting in high-quality leak-resistant threads.
- Surface roughness on a roll thread is about 1/4 of that on a cut thread.



Fig. 1 Chips from cut threads



Fig. 2 Chips from roll threads

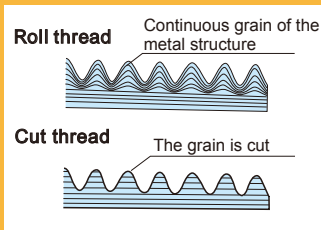


Fig. 3 Grain flow

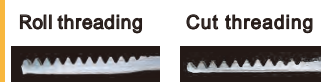


Fig. 4 Cross section

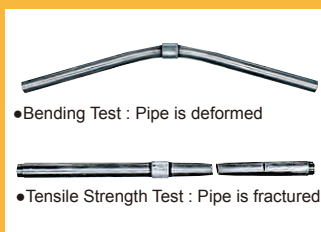


Fig. 5 In strength tests, there was no effect on the thread. The pipe itself became deformed or fractured.

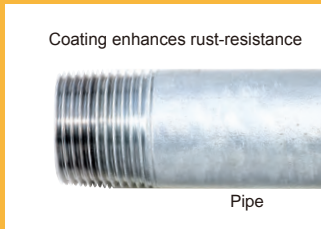


Fig. 6 Thread is left with a layer of pipe coating (20-30 μm).

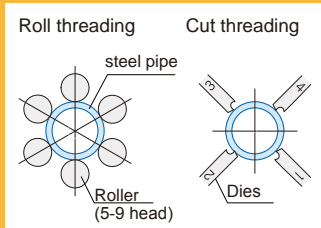


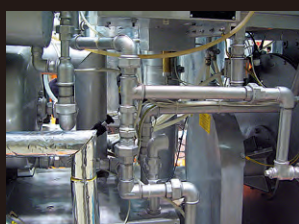
Fig. 7 Roll threading and Cut threading.



Hydraulic Piping



Air Piping



Steam Piping



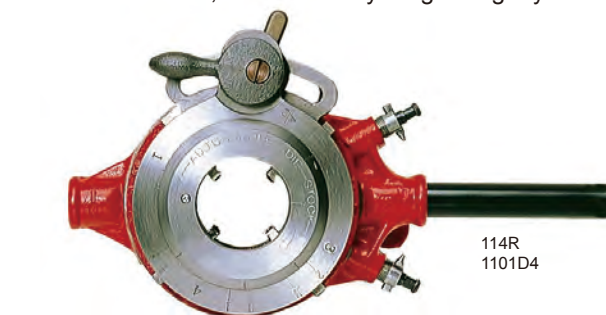
PIPE THREADERS

Manual pipe threader. No power supply required!

OSTER-TYPE RATCHET PIPE THREADER

8A - 50A (1/4" - 2")

- Ratchet facilitates smooth operation.
- Quick-release lever disengages Dies, so there's no need to rotate the unit back again to release it.
- Made of cast iron, the main body is lightweight yet robust. Moving parts are heat-treated and reinforced to limit wear.



114R
1101D4



112R Dies 15A-20A
150007



114R Dies 15A-20A
151007



112R Dies 8A-10A
150003

Code No.	Model	Capacity (in.)
1101D2	112R	1/4 - 1 1/4
1101D4	114R	1/2 - 2

Spare Dies

Code No.	Model	Capacity (in.)
150003*	112R Dies 8A - 10A	1/4 - 3/8
150007*	112R Dies 15A - 20A	1/2 - 3/4
150010*	112R Dies 25A - 32A	1 - 1 1/4
151007**	114R Dies 15A - 20A	1/2 - 3/4
151010**	114R Dies 25A - 32A	1 - 1 1/4
151030**	114R Dies 40A - 50A	1 1/2 - 2

* standard equipment with 112R
** standard equipment with 114R

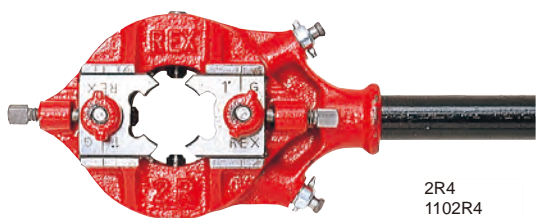
BABY REED-TYPE RATCHET PIPE THREADER

8A - 32A (1/4" - 1 1/4")

- This compact and lightweight model ensures optimum threading in elevated or confined places. Ratchet supplied.
- Proven versatility in applications for gas/water supply pipes and thin steel conduits (by replacing Dies).



2R4 with case
1102R4



2R4
1102R4



2RG Dies 25A
154009



2RC Dies 25
154209



2RG Dies 10A
154003

Code No.	Model	Standard Dies(set)
1102R3	2R3	1/2 - 1 (3)
1102R4	2R4	1/2 - 1 1/4 (4)
1102RE	2RC	C19 - 39 (4)
1102RN	2RG NPT	1/2 - 1 1/4 (4)

Spare Dies

Code No.	Model	Size
154001	2RG Dies 8A	1/4
154003	2RG Dies 10A	3/8
154005*	2RG Dies 15A	1/2
154007*	2RG Dies 20A	3/4
154009*	2RG Dies 25A	1
154010*	2RG Dies 32A	1 1/4
154305***	2RG Dies NPT 15A	1/2
154307***	2RG Dies NPT 20A	3/4
154309***	2RG Dies NPT 25A	1
154310***	2RG Dies NPT 32A	1 1/4
154207**	2RC Dies 19	C19
154209**	2RC Dies 25	C25
154210**	2RC Dies 31	C31
154220**	2RC Dies 39	C39

* standard equipment with 2R4
** standard equipment with 2RC
*** standard equipment with 2RG NPT

CHAIN VICE STAND CVX6

6A - 150A (1/8" - 6")

Robust multi-function performance. Handles the most rigorous jobs with ease!



Code No.	120CVB
Model	CVX6
Pipe Capacity (in.)	1/8 - 6
Appropriate pipe material	Steel pipe, etc
Dimensions (D×W×H) mm	1198 × 1134 × 960
Weight (kg)	19.6
Length of chain (mm)	700

Bender

Effortlessly bends thin-walled tubes up to 3/4".



PIPE VICES

6A - 150A (1/8" - 6")

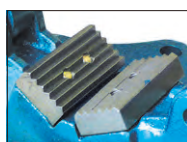
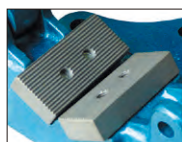
Ensure high durability and long life.



V0 - V4, CV-6 attachable*



Comparison of jaws



Code No.	Model	Capacity (in.)	For
1201V0	V0 Vice	1/8 - 2	Steel Pipe
1201V1	V1 Vice	1/8 - 2 1/2	
1201V2	V2 Vice	1/8 - 3 1/2	
1201V3	V3 Vice	1/8 - 4	
1201V4	V4 Vice	1/8 - 6	
1201VL	VL1 Vice with legs	1/8 - 2 1/2	Externally Coated Pipes
120LV0	V0-L Vice	1/8 - 2	
120LV1	V1-L Vice	1/8 - 2 1/2	
120LV2	V2-L Vice	1/8 - 3	
120LV3	V3-L Vice	1/8 - 4	Steel Pipe
120LVL	VL1-L Vice with legs	1/8 - 2 1/2	
120CV6	CV-6 Chain Vice	1/8 - 6	

120CVL Vice Stand V0 - V4, CV-6 attachable*

* The following nuts and bolts (70 - 80 mm in length) are required to attach a vice to the vice stand.
M10 x 80 mm (3 sets) for the V0 vice, and M12 x 80 mm (3 sets) for vices V1 - V4.