

PIPE BENDER

Electric pipe and tube bender REB32

For sale in Japan only

7/8" - 1 1/4"



Semi hard and soft copper pipes : 7/8", 1", 1 1/8", 1 1/4"
 Stainless steel pipes (thin walled) : 20Su (Φ22.22)
 Electric wire pipes : E25, C25, E31, C31

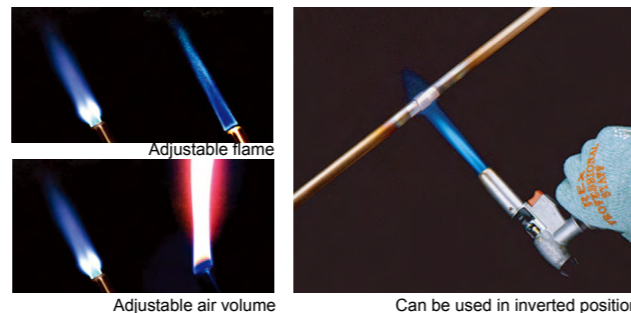
- Easy-to-read digital angle display.
- Settings can be made while gripping the machine in one hand and just turning the dial.
- Easy to check the angle (1° intervals).
- With all sizes, radius of the bend is four times the diameter of copper pipe.
- Slow starter allows fine tuning.
- Simple to set up pipes.
- Rubber feet on tripod stand fitted as standard. Protects floor surfaces.



Code No.	Model	Voltage (50/60Hz) AC (V)	Motor	Rotation Speed (Unloaded) (rpm)	Weight* (kg)	Dimensions L x W x H (mm)
424130	REB32	100	Single-Phase Series motor (1200 W)	2	14.4	630 x 230 x 190

TORCH-AN

For sale in Japan only



PLASTIC PIPE TOOLS

Plastic Pipe Cutter Hyper Saw XS150S / Cutter Guide

Double insulation 89 mm - 355 mm



Code No.	Model	Applicable pipe (mm)	Weight (kg)
380150	Hyper Saw XS150S	89 - 216	3.9
381500	Plastic Pipe Cutter Guide SV200	89 - 216	5.0
314051	Plastic Pipe Cutter Guide SV250	89 - 250	7.0
314052	Plastic Pipe Cutter Guide SV355	89 - 355	8.5

Saw Blade for Plastic Pipe

Code No.	Model	Applicable pipe (mm)
381555	Saw Blade for Rex Hyper Saw No. 25	89 - 216
314055	Saw Blade 450 for plastic pipe	89 - 250
314056	Saw Blade 480 for plastic pipe	89 - 355

Plastic Pipe tool Multi-clamp

Clamp for socket joint ▶ Socket Cap Bend Tee

- Chain clamp allows for wide range of applicable sizes.
100: nominal size 50, 75, 100
200: nominal size 100, 150, 200
- Easy angle adjustment.
32 teeth on clutch for angle adjustment.
- Clamp knob for easy fastening.
Large clamp knob and built-in screw improves maintenance.
- 4-way clamp setting.
4 ways of setting: upper, lower, outside and inside.

100 Multi Clamp 314021

4. Variation of Clamping

Code No.	Model	Applicable Size (Nominal)	Applicable joint
314021	100 Multi Clamp	50 - 75 - 100	Socket, Bend, T-type, Single socket (S.S.) straight, S.S. bend, S.S. Tee
314022	200 Multi Clamp	100 - 150 - 200	

SHUT-OFF TOOL 50, 75, 100

For sale in Japan only

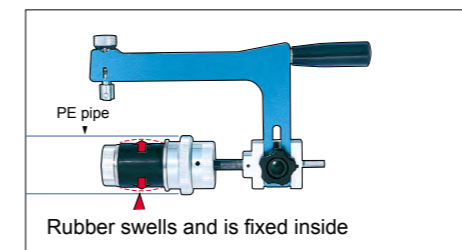
25 - 100



Code No.	Model	Applicable Size (Nominal)
310488	Shut-off Tool 50-II	25 - 50
310493	Hydraulic Shut-off Tool 75	25 - 75
311400	Hydraulic Shut-off Tool 100 Body	50 - 100
310495	Hydraulic Pump for SoT.100	-
310496	Hydraulic Pump Hose for SoT.100	-

SOCKET SCRAPER 100 USS100W for Water Mains

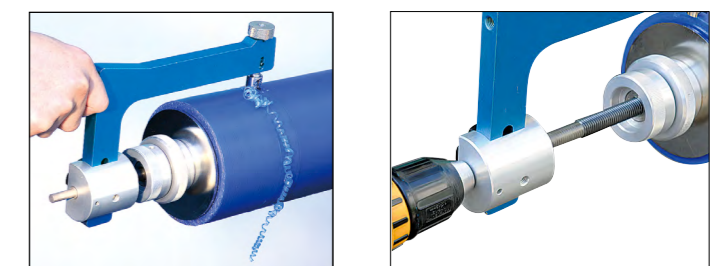
50 - 100



Code No.	Model	Applicable Size (Nominal)
314105	USS100W	50 - 100

Easy, precise scraping

- Scrapes plastic pipe end for socket joints.
- The rubber swells and is fixed tightly inside the pipe.
- The built-in spring allows the blade to move smoothly around the pipe.



Easily operated by hand

Used with a power drill