

REX INDUSTRIES CO., LTD.

For the NEXT STAGE

"The Three Benefits" is a concept that forms the basis of our business philosophy, focussing on courteous customer and employee relations and service to society as a whole.

CUSTOMER RELATIONS

Corporate Philosophy

"The Three Benefits"

Our philosophy of "The Three Benefits" is aimed at benefitting our customers, our employees and society as a whole. In a spirit of mutual trust, we make every effort to enable each of these three parties to enjoy mutual prosperity and, in the process, we aim to contribute to modern society.

Management Policies

We aim to improve the quality of our management and to create a comfortable working environment for our users, which includes providing products that are easy to use, leave a lasting impression, and which you simply enjoy using.

Manufacturing Policy and Concern for the Environment

Based on the concept that "product development starts at the work site", we put every effort into innovation and the creation of products of the highest quality that both gain our customers' complete trust and satisfy their increasingly demanding needs. At the same time, we put every effort into achieving an environmentally-friendly enterprise with a truly global outlook.



"The Three Benefits"



Head Office, Factory / Osaka Sales Dept.



Head Office, Factory

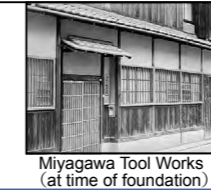


Head Office / Factory / Museum

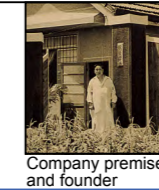
AN OUTLINE OF REX

Established	August, 1925
Capital	¥90,000,000 (REX Group Total : ¥1,050,000,000)
Chairman President	John K. Miyagawa Junichi Miyagawa
Registered address & Finance Dept.	1-4-5 Nishi Shinsaibashi Chuo-ku, Osaka, Japan
Head Office & Main Factory	1-9-3 Hishiya-Higashi, Higashi-Osaka, Japan
Tottori Factory	1124-7 Takata, Daisen-cho, Saihaku-gun, Tottori Japan
Branch Offices	Tokyo and Osaka
Sales Offices (Domestic)	Sapporo, Sendai, Tokyo, Maebashi, Kanagawa, Nagoya, Osaka, Hiroshima and Kyushu
No. of Employees	180 (REX Group Total : 300)
Activities and Products	Planning, development, production, manufacture, sales and marketing of Pipe Threading Machines, Cutters, Fusion Units, Copper Tube Tools, Diamond Core Drills and Machinery & Equipment for the Environment, Water systems, and Equestrian-related products etc.
Group Companies	REX International U. S. A., Inc. Suzhou REX Electro-Machinery Co., Ltd. REX International Asia Co., Ltd. REX Industries Europe S. r. l.

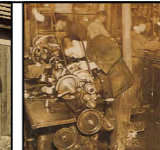
THE HISTORY OF REX



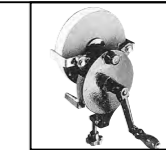
Miyagawa Tool Works (at time of foundation)



Company premises and founder



Factory



Hand Grinder



Cobra Blow Torch



Oster type Pipe threader

- 1925 : Miyagawa Tool Works established.
- 1935 : Factory moved to newly constructed facility in Higashi-Osaka City (present location).
- 1938 : Policy initiated of hiring the disabled.



- 1959 : Tokyo branch office opened, marking the first step toward the creation of a domestic network.
- 1961 : Second factory completed at Head Office. Mass production of pipe machines started.
- 1964 : Sales department becomes an independent concern, REX Tool Co., Ltd.
- 1965 : REX Industries Co., Ltd. established.
- 1974 : European market links opened.
New reconstruction work on Head Office factory completed.
- 1976 : American market links opened.
- 1979 : Head Office moved to Minamishimizu-cho, Minami Ward, Osaka.
- 1988 : Wheeler Mfg. established as a division of REX International U.S.A., Inc.
2D computer-aided design (CAD) introduced.
- 1989 : REX Industries Co., Ltd. merges with REX Tool Co., Ltd.
Service division becomes an independent company (REX Techno Service Co., Ltd.)

REX

- 1990 : Construction of training facilities at Misaki Hall completed.
REX products exhibited at Milan exhibition.
- 1991 : REX International Asia Co., Ltd. established.
Construction of new building in Higashi-Osaka completed.
- 1992 : "ENSYS" production control system and "RIMSS" sales control system implemented.

REX

- 1993 : Corporate Identity (CI) activities initiated.
Horse Amenity Division established.
SPARKEL series awarded first prize by Osaka Design Center.
- 1994 : MANTIS 180 (Band Saw) and REX Star 25 (pipe threading machine) awarded Good Design Award by the Ministry of International Trade and Industry.
MANTIS 180 awarded Good Design Prize for Products, Architecture or Interiors by Small and Medium Enterprises Agency.
- 1995 : Support team organized to help with reconstruction following the Great Hanshin-Awaji Earthquake of January 1995; team dispatched to reconstruction sites.
Research into diamond tools and equipment begins.
- 1996 : Suzhou REX Electro-Machinery Co., Ltd. established.
Tottori Factory established.
3D computer-aided design (CAD) introduced. In-house network completed.
- 1997 : REX Museum completed.
Roll Threading machine receives Grand Meritorious Prize for Japanese Inventions.
- 1998 : Trade with Central & South America begins.
ISO 9001 certification acquired.

REX

- 2000 : Participated in ENF exhibition, Mexico.
- 2001 : RB Tube Cutter wins Good Design Award, and Small and Medium Enterprise Agency Director's Award.
REX exhibits products in Eastern Europe for the first time (Prague, Czech Republic).
REX International Asia Co., Ltd. moves to new offices.
- 2002 : REX Industries Europe S. r. l. established.
Participated in Mostra Convegno, Italy.
- 2003 : ISO 14001 Certification acquired.
- 2004 : Construction of Suzhou REX No.2 Plant completed.
First participation in Japan D.I.Y. Home Center Show.
- 2005 : Celebration of 80th Anniversary of the founding of the company.
- 2006 : Awarded Higashi-Osaka Gold Prize for Craftsmanship.
- 2007 : Mantis 180WA/180WS Band Saw launched.
Official supplier of International Skills Festival for All Japan 2007.
- 2008 : Winner of the 33rd Nikkan Industrial Newspaper Grand Prize for Inventions
Recipient of the Osaka Environmental Agency Incentive Award for Business Activities.
Selected as one of the "300 Vibrant Manufacturing SMEs" (METI 2008).
- 2010 : According to a revision of the Standard Specifications for Public Construction Works issued by the Ministry of Land, Infrastructure and Transport, 2010, rolled threads and powdered polyethylene lined steel pipe up to 50A can be used.
- 2011 : Tottori Factory Receives JSCTA's Environment Award.
- 2012 : RG-150A and MANTIS 180WA/WS selected in both Development (Technology) and Design categories of the Higashiosaka Products Selection.



* 1 : Winner of Good Design Award: Japan Industrial Design Promotion Organization
* 2 : Winner of Osaka Design Center Good Design Prize