

N100A

8A - 100A (1/4" - 4")

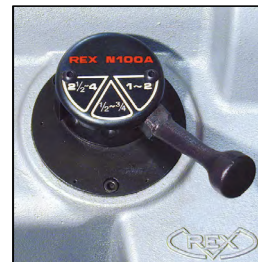
Standard Model 1/2"-4"

Efficient 3-speed transmission speeds up your work.

- Less than 100 sec to make a perfect 4" pipe taper thread. Less than 20 sec for a 1" pipe taper thread.
- Uni-auto die head for 1/2 - 2" pipe. Dies are compatible with NP50A/NP80A manual die heads and Uni-auto die heads.
- Profiling die head for 2 1/2 - 4" pipe. REX original profiling system enables precise, straight tapers, with 20 mm dies performing at higher speed and requiring less power consumption.
- Quick adjustable cutter.
- Quiet, maintenance-free condenser motor.
- Built-in tool box is convenient for on-site work.
- Large-capacity scrap catcher.
- Threading size, thread length, and microfine adjustment of thread diameter can all be adjusted easily.
- Compact and lightweight for its class (123 kg), it can be set up by just two people.
- NV-auto and Manual die heads can be mounted as options.



The condenser motor is quiet yet very powerful. As it does not use carbon brushes, it is basically maintenance free.



A choice of 3 speeds enables you to select the best speed for the size of pipe.

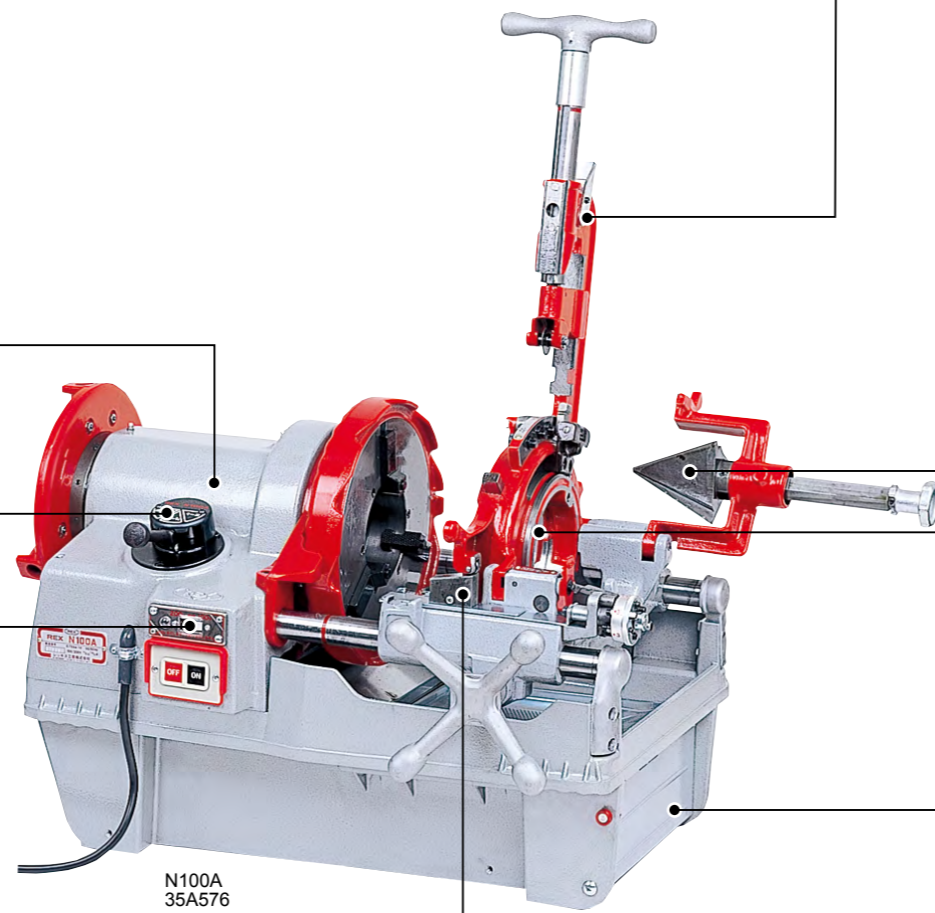
Model with voltage shift switch available. (35A576/35A602)

Standard Accessories:

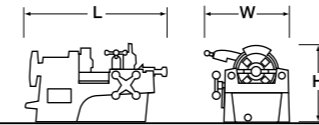
- Cutting Oil (246-R) 4 L
- Hex key-wrench 3-4-5-6-8 mm, Dies 1/2"-3/4", 1"-2", 2 1/2"-4" 1 set each
- Die head 1/2"-2", 2 1/2"-4" one each



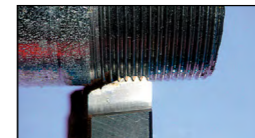
With REX' original profiling system, you can make accurate tapers and easily adjust thread length.



N100A 35A576



The cutter has a built-in function for quick adjustment to the pipe diameter.



With 20 mm-wide profiling dies, the load is reduced, which makes it easy on the motor.



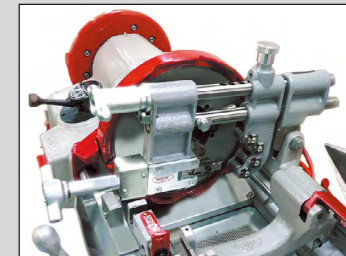
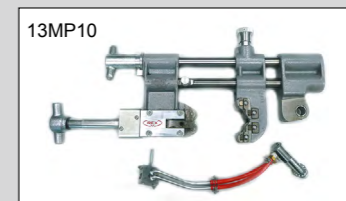
3-blade Reamer



Built-in tool box

BLADE-TYPE CUTTER (Option)

Blade-type cutter for plastic lined pipe, and hard and thick pipe



Blade-type cutter on N100A



Blade 13E846



Uni-auto die head (for 1/2"-2" pipe)

Profiling Die Head (for 2 1/2"-4" pipe)

Code No.	Voltage	Dies type	Remarks
35A570	220 V, 50 Hz	BSPT	
35A576	110/220 V, 60 Hz	BSPT	
35A578	110 V, 60 Hz	BSPT	no leg
35A580	220 V, 50/60 Hz	NPT	
35A591	220 V, 60 Hz	BSPT	G-plug
35A599	120 V, 60 Hz	NPT	
35A513	230 V, 50 Hz	BSPT	CE+Foot Switch
35A602	110/220 V, 50 Hz	BSPT	CE+Foot Switch
35A5H0	230 V, 50 Hz	NPT	CE+Foot Switch

• Die Head: Uni-auto 1/2" - 2" + Profiling 2 1/2" - 4"

Threading Capacity (in.)	Voltage (50/60 Hz) AC (V)	Motor Single-Phase	Rotation Speed (Unloaded) (rpm)	Weight* (kg)	Dimensions L x W x H (mm)
1/2 - 4	110-120 or 220-230	Condenser 750 W or 1000 W	43 (1/2" - 3/4")	123	873 x 635 x 558
			24 (1" - 2")		
			13 (2 1/2" - 4")		

\* without DH